

# CALLA

SERIES











For more than 37 years, University Loft Company has been bringing ingenuity, style, and quality to our customers across the globe. From our manufacturing plants in the heart of America to our facilities overseas, we have grown our footprint to provide the best products and the best experience for our customers.



## WORLD HEADQUARTERS

## TABLE OF CONTENTS

BEDS	4
COLOR OPTIONS	5
FEATURES	6
CHESTS	8
DESKS	10
WARDROBES	12
STORAGE OPTIONS	14

# STANDARD BED SETUP

## ADJUSTABLE

10 different height settings for the perfect bed configuration to help elevate your student housing

SCAN TO FIND THE PERFECT FIT FOR YOUR PROJECT



## NEW HEIGHTS

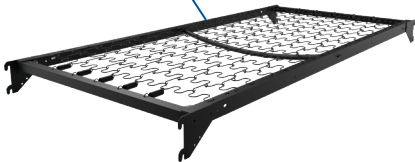
Optional 60" tall bed end offers additional lofting options while reducing number of bed ends required.



BED ENDS



MATTRESS



SPRING UNIT

## ENHANCE YOUR BED

Add these simple storage solutions to enhance your metal beds.



BED SHELF  
BS01CAL

30"W X 12"D X 16"H



BED SHELF  
BS02CAL

16"W x 10"D x 4.25"H



# COLOR OPTIONS

AVAILABLE  
FINISHES



NEW AGE OAK



URBAN GREY ELM



FLORENCE WALNUT



# SERIES FEATURES

The Calla Series is named after the Calla Lily and the Greek word meaning “most beautiful.” It comes in three attractive laminate options which follow the latest color trends. The series features several add-ons that can further enhance the product. Pull out shelves can be added to the 3-drawer chest, mobile pedestal, and desk as extra work space. Casters can also be added to provide the greatest flexibility to allow students to customize space.



- Built for modularity, so all pieces can be swapped in and out and work together cohesively.
- Add more work space by upgrading desks, mobile peds, and chests with a pull out tray.
- Drawers feature metal drawer side panels with integrated heavy-duty slides. Drawer fronts are recessed into the side panels.
- All six sides use construction grade laminate to ensure the highest quality, finished inside and out for a clean look throughout.



# BUILT DIFFERENTLY

Each piece is constructed with steel frames along the bottom and 45lb. density industrial grade laminate with melamine exterior. The high-pressure laminate tops meet the demanding needs of student housing environment with gator ply backer and 2mm edge banding. In addition, the drawer boxes are constructed with additional metal bracketing, giving the furniture exceptional durability.



HIGH PRESSURE LAMINATE  
WITH 2MM EDGE BANDING

## HEAVY DUTY DRAWERS



DRAWER FRONTS ARE  
RECESSED INTO SIDE PANELS



METAL DRAWER SIDE PANELS WITH  
INTEGRATED HEAVY-DUTY SLIDES



DRAWER SLIDES RATED  
AT 70LB STATIC LOAD



1" X 1" 18-GUAGE  
STEEL TUBE FRAME

## LAYERS OF STRENGTH

Industrial grade laminate is securely attached to 1"x1" 18-gauge steel tube frame with reinforced plates when adding casters to the Calla Series chests, mobile pedestals, and wardrobes to these products to ensure maximum strength, durability, and mobility.

CASEGOODS

# CHESTS







**SINGLE DRAWER CHEST**  
CH10CAL.36  
36"W x 23.75"D x 20"H



**TWO DRAWER CHEST**  
CH20CAL.36  
36"W x 23.75"D x 22"H



**THREE DRAWER CHEST**  
CH30CAL.36  
36"W x 23.75"D x 30"H

FIND THE PERFECT  
STORAGE OPTION

Part No.	Dimensions
SINGLE DRAWER CHEST	
CH10CAL.30	30"W x 23.75"D x 20"H
CH10CAL.36	36"W x 23.75"D x 20"H
CH10CAL.42	42"W x 23.75"D x 20"H
TWO DRAWER STACKABLE CHEST	
CH20CAL.30	30"W x 23.75"D x 22"H
CH20CAL.36	36"W x 23.75"D x 22"H
CH20CAL.42	42"W x 23.75"D x 22"H
THREE DRAWER CHEST	
CH30CAL.30	30"W x 23.75"D x 30"H
CH30CAL.36	36"W x 23.75"D x 30"H
CH30CAL.42	42"W x 23.75"D x 30"H



LEVEL UP YOUR STORAGE

Our 2-drawer options can be stacked to increase your storage while not increasing square footage.

CASEGOODS

# DESKS





Desks available in additional widths. Writing desks can be 30 or 36 inches wide and Pedestal desks can be 36 or 42 inches wide.



**WRITING DESK**  
DK10CAL.36  
30"W x 23.75"D x 30"H



**WRITING DESK WITH DRAWER**  
DK11CAL.36  
30"W x 23.75"D x 30"H



**PEDESTAL DESK**  
DK01CAL.36  
36"W x 23.75"D x 30"H

## COMPLETE YOUR STUDY SOLUTION

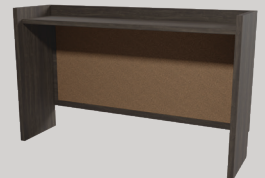
The desk carrel is a perfect addition to complete your study solution. You can choose a cork or magnetic whiteboard back to enhance the carrel. The carrels also come in a variety of widths to maximize space, 30, 36, 42, 48, 54, and 60



**DESK CARREL**  
CL01CAL.36  
36"W x 10"D x 22"H



**WITH WHITEBOARD**  
CL01CAL.36.WB



**WITH CORKBOARD**  
CL01CAL.36.COR



**TABLE DESK**  
DK20CAL.30  
30"W x 23.75"D x 30"H



**WHITE BOARD CARREL**  
CL02CAL.36  
36"W x 1.75"D x 22"H

**TABLE DESK**  
DK20CAL.36  
36"W x 23.75"D x 30"H

CASEGOODS

# WARDROBES





---

All wardrobes are available in either 60 or 72 inch heights

---



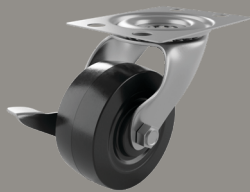
**WARDROBE**  
WR01CAL.18  
18"W x 23.75"D x 72"H



**WARDROBE**  
WR01CAL.30  
30"W x 23.75"D x 72"H



**WARDROBE**  
WR01CAL.36  
36"W x 23.75"D x 72"H



## JUST ROLL WITH IT

Maximize your flexibility by adding casters. These casters connect to rigid steel frame via metal plate adding exponential connection strength.

A dark-stained wooden storage unit, possibly made of walnut, featuring a flat top surface and open shelving. The unit is shown from a three-quarter perspective, highlighting its clean lines and natural wood grain. The background is a neutral, light gray.

CASEGOODS

# STORAGE



All mobile pedestals are available in either 18 or 24 inches widths



**MOBILE PEDESTAL**  
MP01CAL.18  
18"W x 23.75"D x 30"H



**MOBILE PEDESTAL**  
MP02CAL.18  
18"W x 23.75"D x 30"H



**MOBILE PEDESTAL**  
MP03CAL.18  
18"W x 23.75"D x 30"H



**BOOKCASE**  
BK01CAL.24  
24"W x 12"D x 30"H



**UTILITY  
ENTERTAINMENT  
CONSOLE**  
UC01CAL.24  
24"W x 12"D x 30"H

# THE LEADING EDGE IN STUDENT HOUSING

For more information on any of the products shown here, as well as any of our other product lines, please contact a sales representative today. Please note that products shown are available for order as of this printing, but be sure to check with your sales representative for current availability and lead time.



2588 JANNETIDES BLVD., GREENFIELD, IN 46140 • [WWW.ULOFT.COM](http://WWW.ULOFT.COM) • 800.423.LOFT

