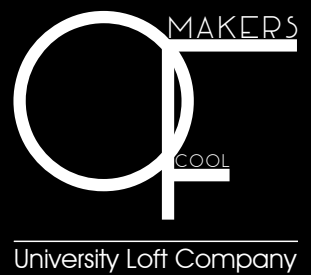


2019  
**HOME** & more  
Let your kitchen tell the story, from one lease to the next.





## CONTENTS

OUR STORY	5
MORE THAN FURNITURE	6
DOVETAIL TECH	8
THE 1, 2, 3	10
KITCHENS	12



## THE LOFT WAY

Welcome, and thank you for checking out our catalog of quality furniture and related products from University Loft Company. At ULC, we've been at the forefront of innovative furniture design and manufacturing for more than a quarter century, serving college and university, government and military, hospitality, and residential customers. In this catalog you'll find our newest products designed to fit your lifestyle needs today—and designed to last for years to come.

We're committed to producing top-quality furniture that provides the best overall value. By using superior strength materials emphasizing solid wood construction, along with state-of-the-art construction methods, University Loft delivers furniture that stands the test of time. Simply put, we're proud to be an American company manufacturing products in the American heartland. We're also proud to have offices, production facilities and customer markets worldwide where we can expand the reach of American ingenuity, style and quality.

We're committed to being responsive to your unique needs, your individual concerns and your furniture-buying challenges. Whether you are a residential consumer choosing a bedroom set for your growing child, a procurer of furniture for military housing, or a college residence life furniture buyer, we're committed to making your furniture buying experience more satisfying.

When all is said and done, we hope you'll recognize that our business isn't really about furniture; it's about the people who entrust University Loft Company to outfit the personal spaces where they live, work and play. To remain worthy of that trust, we are always learning, always innovating and always improving... our environment, our products and our service. It's what you expect of us and it's what we demand of ourselves.



## **MORE THAN FURNITURE**

UniversityLoftCompanyiscommittedtothemanufacturing of superior constructed and designed furniture at extremely competitive prices, with an unmatched level of customer service.

Our new products feature updated styles and designs and also provide the same quality we've been known for since 1986. It's our mission to create products that can withstand rigorous daily use, but also be innovative, interchangeable, and environmentally friendly.

At University Loft Company, it is our desire to offer our customers the best in service and quality furniture products from college student furniture to kitchen islands, from living room sets to dining tables.

All of our furniture is manufactured with high standards so that we can deliver the best in service and quality furniture products.

Built from some of the hardest wood grown, Hevea Brasiliensis is also kind to our environment. In independent laboratory tests, this wood has surpassed others. But the testament to our product's durability is shown when one generation to the next has been able to use the same furniture.

# EAGLE'S LANDING, DAYTONA BEACH, FL

WHERE CLASS MEETS  
CONTEMPORARY





# EVERY CORNER MATTERS

## DOVETAIL TECHNOLOGY

Drawer boxes are constructed with English dovetail joints along with full-extension drawer glides. All drawers are constructed with 4 corner blocks. Each drawer bottom consists of a stretcher for added support.





# UNPARALLELED ENGINEERING & TECHNOLOGY

## THE SMALLEST DETAIL MAKES THE BIGGEST DIFFERENCE.

Using the best construction methods available, University Loft Company builds the longest-lasting, most durable casegoods on the market. From top to bottom, everything about a ULC casegood is strong. Built completely of solid hardwood, these casegoods will stand the test of time.

# THE 1,2,3

## STEP BY STEP

### 1| PLAN

Bring the your ideas to reality through our 3 step process.



Our process is simple and involves 3 steps - Plan, Visualize, and Implement. When you partner with the Makers of Cool, you partake in a process that guaranties quality and professionalism of the highest degree from start to finish of each project.



### 2| VISUALIZE

SKYVUE,  
PITTSBURGH, PA

3 | IMPLEMENT





## KITCHENS & ISLANDS

Our Kitchen Islands are made with the same high quality and attitude of excellence with which our college furniture is built. They are durable and stylish and will make any room look better. From the warmth of wood furnishings to the cool strength of brushed steel and durability of high-pressure laminate, each piece is designed to withstand day-in and day-out use.



# KITCHENS





# MOBILE KITCHEN ISLANDS

## LARGE MOBILE KITCHEN ISLAND

63587SKD.CC.WG-64

SEATING CAPACITY: 5

DIMENSIONS: 84"L X 30"D X 36"H

### CART STYLED STORAGE

Convenient storage / display space

Material finishes contrast with other surfaces in a complement manor

Robust construction and material thickness

Rounded storage hooks in custom matching metal for hanging pans, towel, cooking utensils (etc.)

Lower brushed steel frame with welded industrial non marring casters (we have a weight test)





## **SMALL MOBILE KITCHEN ISLAND**

**63586SKD.CC.WG-64**

**SEATING CAPACITY: 2**

**DIMENSIONS: 48"L X 24"D X 36"H**

## **WELDED STEEL PERIMETER FRAME CONSTRUCTION**

Contemporary Urban Loft aesthetics

Materials true to construction and process

Durable Clear powder coated finish

Excellent durability and strength

Corner leg angle iron accent adding an additional construction element.

Is your cabinet space jam packed? Have you used all of the top of the counter to place your items? Do you find you have to place some of your kitchen objects on top of the fridge or worse – in the coat closet? When your kitchen counter space becomes storage space, let Uloft help with our Kitchen Island.

Whether you get the large or the small, these islands offer extra storage with shelves for placing items and hooks for hanging them. They also have places to sit and can be used as tables. The large islands seat up to five. If it's just you and another, the smaller island is perfect and seats two.

University Loft has made sure that these units look amazing in any kitchen with their 100% granite tops and welded steel perimeter frame construction. These counter tops are 3 centimeters thick, so don't you worry about placing a hot plate or steaming pot on it, this heat resistant unit can take it. You'll find it perfect for preparing meals, making cookies, or even working puzzles, and it meets building codes.

Now on to the storage. You need an extra place for storing your kitchen items. The shelves are a great place to put your extra plates, glasses or serving dishes. You can also use them to set decorative items that match the theme in your home. Rounded hooks are placed on the sides of the island perfect for hanging pot holders, long-handled utensils, or towels.

Another great feature of the Kitchen Island is its wheels. This is great if you ever need to roll it into another part of them. That is especially helpful when you're having a party or during the holidays.

Like everything University Loft creates, the Kitchen Island is built with durability and strength.





## PORTABLE

Able to relocate Kitchen Island to add to flexibility to layouts.  
Flexibility to attract new tenants who can customize the layout.  
Flexibility to keep current tenants who can customize the layout.  
Can be added to current kitchens as a cost effective update/enhancement.





## GRANITE OPTIONS



**TONGAN WHITE**



**BAINBROOK BROWN**

### **100% REAL SOLID GRANITE STONE TOP**

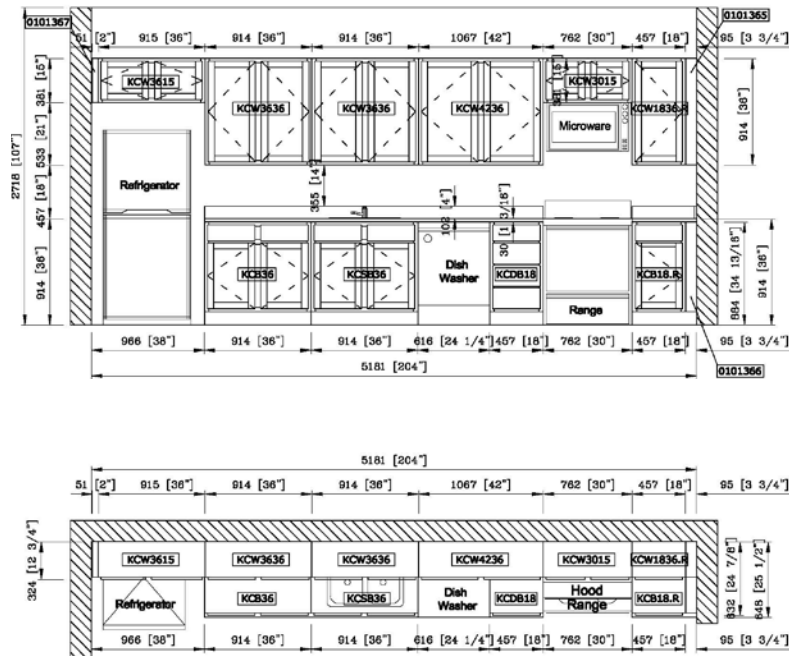
3cm thick solid granite meets building code  
Excellent for food prep surface and dough rolling  
Excellent heat resistance

Allows other counter surfaces to be in laminate while still giving the kitchen an upscale look and benefits of 100% real, solid granite stone top.

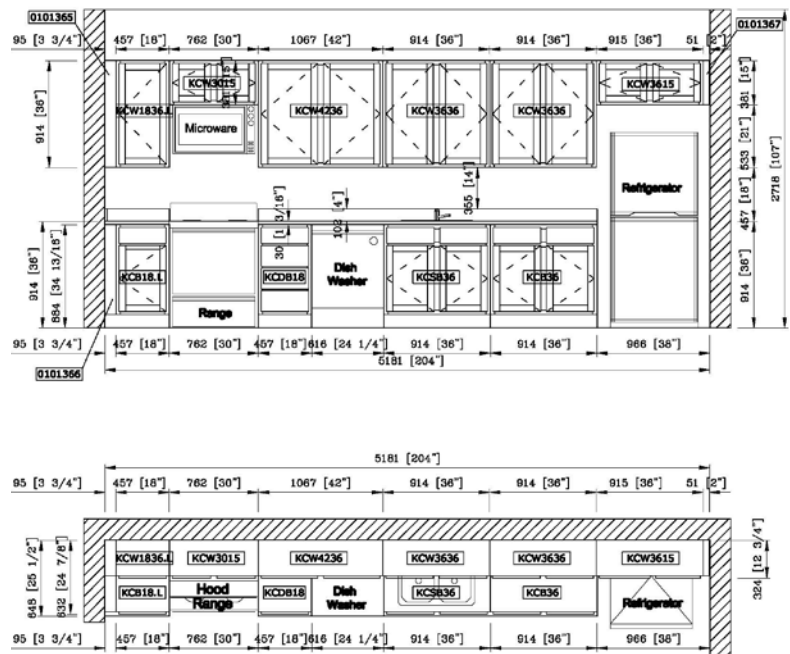
# GRANITE TOPS







# CABINETRY DONE RIGHT





# KITCHEN CABINETS



## **KITCHEN CABINETS**

Our Kitchen Cabinet Program is the next big thing the Makers of Cool are launching. Whether you have a traditional or contemporary style, we have the ability to accommodate to your taste - no matter how big or small the detail.

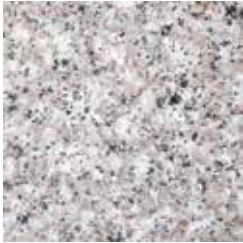
Thorough design and construction is engineered in every counter top, drawer, door, and color pallet. University Loft takes the traditional ideology of wood craftsmanship, and collaborates with today's technology and spec to create a unique, comfortable, and tasteful feel.

Cabinetry is an art and science in that of itself. Allow the Makers of Cool to take you on a journey that will satisfy your interior designing for years to come.

# GRANITE OPTIONS



TONGAN WHITE



BAINBROOK BROWN



# FINISH OPTIONS



BIRCH



NATURAL



WILD CHERRY



CAFELLE







For more information on any of the products shown here,  
as well as any of our other product lines please contact a sales representative today.

2588 Jannetides Blvd., Greenfield, IN 46140 | [www.uloft.com](http://www.uloft.com) | 800.423.LOFT (5638)

