



508,000 SQ/FT OF
QUICK SHIP PRODUCT



University Loft Company
Product Showcase



The Original Loft built by James Jannetides, 1984

Mission Statement

University Loft Company is committed to contributing to the economic growth of the local Community, the United States, and our team members by providing superior furniture at extremely competitive prices, with an unmatched level of customer service and satisfaction.



Index

COLLEGE & UNIVERSITY	5
Graduate Series	5
Jericho Series	25
Greenfield Series	29
SAFETY INFORMATION	35
STUDENT HOUSING	37
Metropolitan Series	37
Uptown Series	49
Meridian Series	53
Windsor Series	57
Flat Iron Series	61
DEFENSE QUARTERS GSA	67
GSA Metal	69
GSA Wood	77
GSA Upholstery	85
GSA Seating	89
UPHOLSTERY	93
SEATING SOLUTIONS	131
GREEN INFORMATION	143

THE ENVIRONMENT

University Loft Company has taken a proactive approach to the environment by implementing a Green Plan. This green plan outlines how we as a company will do all we can to ensure we do not contribute to the demise of the environment.

HOW WE DO BUSINESS

University Loft Company believes in offering the best quality and customer service. ULC maintains workforce standards and benefits throughout the globe, including our Malaysia office. We comply with wage standards, 40 hour work week schedules, 401K, and Social Security.

STUDENT HOUSING

We provide furniture to the student housing market across the United States. We pride ourselves on making quality furniture that is durable and safe enough to withstand the everyday wear and tear of student life.

GSA

At ULC, we are proud to provide furnishings to the government sector. We specialize in Whole Room Concepts and carry over \$5 million worth of inventory to assure quick shipment.

MASS MERCHANT

ULC has expanded in the marketplace and now our quality products are featured in mass merchant stores across the country.



www.facebook.com/universityloft



www.instagram.com/uloft



www.twitter.com/uloft



www.youtube.com/user/uloft

Join our mailing list to receive news and updates: <http://bit.ly/GeneralSignup>

World HQ

Greenfield, Indiana, USA



University Loft: An American Company Committed to Innovating World Class Furniture!

Welcome, and thank you for checking out our catalog of quality furniture and related products from University Loft Company. At ULC, we've been at the forefront of innovative furniture design and manufacturing for more than a quarter century, serving college and university, government and military,

hospitality, and residential customers. In this catalog you'll find our newest products designed to fit your lifestyle needs today – and designed to last for years to come.

As you flip through these pages, remember that University Loft Company is built on these cornerstones of commitment:

WE'RE COMMITTED TO PRODUCING TOP-QUALITY FURNITURE THAT PROVIDES THE BEST OVERALL VALUE.

By using superior strength materials emphasizing solid wood construction, along with state-of-the-art construction methods, University Loft delivers furniture that stands the test of time.

WE'RE COMMITTED TO MANUFACTURING FURNITURE IN AMERICA

Simply put, we're proud to be an American company manufacturing products in the American heartland. We're also proud to have offices, production facilities and customer markets worldwide where we can expand the reach of American ingenuity, style and quality.

ULC HEADQUARTERS



508,000 SQ/FT Manufacturing Facility & Corporate Headquarters - Greenfield, IN



www.uloft.com

ULC UPHOLSTERY FACTORY



635,000 SQ/FT Upholstery Plant/Distribution Facility - Morristown, TN

WE'RE COMMITTED TO BEING RESPONSIBLE STEWARDS OF OUR ENVIRONMENT

At University Loft Company, we use a hardwood Environmentally Farmed Timber that's stronger than Northern Red Oak! Even better, our EFT hardwood grows faster, yields more and can be used for latex production during its growth cycle.

MOST IMPORTANTLY, WE'RE COMMITTED TO YOU

We're committed to being responsive to your unique

needs, your individual concerns and your furniture-buying challenges. Whether you are a residential consumer choosing a bedroom set for your growing child, a procurer of furniture for military housing, or a college residence life furniture buyer, we're committed to making your furniture buying experience more satisfying.

When all is said and done, we hope you'll recognize that our business isn't really about furniture; it's about the people who entrust University Loft Company to

outfit the personal spaces where they live, work and play. To remain worthy of that trust, we are always learning, always innovating and always improving... our environment, our products and our service. It's what you expect of us and it's what we demand of ourselves.

Thank you for choosing University Loft furniture.



James Jannetides

Founder of University Loft Company

Have questions? Have a special furniture design or manufacturing request? Want to place an order? Contact us today at 800.423.LOFT (5638). We look forward to serving you.



The original Loft built by James Jannetides



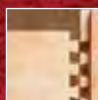
Annual Arbor Day Tree Planting
Trees Planted: 800

Employees, local dignitaries, teachers and students gather every year at ULC to celebrate Arbor Day

The Twin Bed



3"x 3" Full Track Bed Post



Drawer Box Dovetail Joints



100% Solid Wood Casegoods



High Pressure Laminate Tops



10955 WRITING DESK



TWIN BED

This is our basic configuration. Our bed ends are designed to be adjustable, allowing the sleep surface to quickly be raised or lowered to desired height. The two drawer chest can be placed side-by-side under the bed to save space, or can also be stacked to create a four drawer chest.

A. 10401 BED ENDS

One pair of twin size 'Tool-Less' 4 slat ladder style bed ends with 3" x 3" posts and adjustable settings. Includes 2 bunking pins.

Bed End: 39 1/4"W x 3"D x 34 1/2"H
Sized for 36" Mattress



B. 10624-30 TWO DRAWER CHEST

- Stackable
 - Laminate top
- 36"W x 21 13/16"D x 18 13/16"H



C. 10957-30 PEDESTAL DESK

- Pencil drawer with removable divider
 - Two left side drawers
 - Deep file drawer
 - Laminate top
- 42"W x 22"D x 30"H



D. 10302 DESK CARREL

- 19" Shelf clearance
- 40"W x 12 11/16"D x 23 15/16"H



E. 10PLY2 TWO POSITION CHAIR

Ply2 based chairs are designed to lean. Available with wood seat and back or upholstered. Ask about fabric options.

19 5/16"W x 22 11/16"D x 33"H



F. 10796 WARDROBE

This wardrobe features two raised panel doors, two drawers, a clothes rod, and a grommet hole in the back panel.

- Metal Hanging Bar
- Two 2/3 length, raised-panel doors
- Two drawer base with top groove finger pulls

36 11/16"W x 22 1/16"D x 78 15/16"H



STACKABLE CHEST

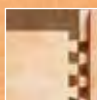
Our two drawer chest is built to fit side-by-side underneath a bed, or to be stacked as a four drawer unit.



The Twin Bed



3" x 3" Full Track Bed Post



Drawer Box Dovetail Joints



100% Solid Wood Casegoods



High Pressure Laminate Tops

100% solid wood equals great value. This product has a 30 year life and is the best in on-campus housing available today with solid wood drawers, sides, and fronts. High pressure laminate tops allow for very heavy-duty use. These tops have a 10 year warranty which can be upgraded to 25 years.

This group is in stock as of this printing and can ship within 72 hours.

GRADUATE TWIN BEDS

Our most traditional configuration built with the quality and durability you have come to expect from ULC. Our twin beds can be bunked or separated, depending on your personal style. The twin setup pairs well with our unstackable four drawer chest to maximize space and storage.

A. 12410 BED ENDS

One pair of twin size 'Tool-Less' 4 slat ladder style bed ends with 3" x 3" posts and adjustable settings. Includes 2 bunking pins.

Bed End: 41 1/4"W x 3"D x 34 1/2"H

Sized for 38" Mattress



B. 12624-12 TWO DRAWER CHEST

- Stackable
 - Laminate top
- 36"W x 21 13/16"D x 18 13/16"H



C. 12302.2 DESK CARREL

- Cork board backing
 - Shelf clearance: 19"
- 40"W x 13 3/4"D x 23 15/16"H



D. 12957-12 PEDESTAL DESK

- Pencil drawer with removable divider
 - Two left side drawers
 - Deep file drawer
 - Laminate top
- 42"W x 22"D x 30"H



E. 12634-12 THREE DRAWER CHEST

- Laminate top
 - Ball-bearing glide drawers
- 36 9/16"W x 22"D x 30"H

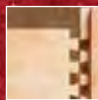


12955 WRITING DESK

The Junior Loft



3"x 3" Full Track Bed Post



Drawer Box Dovetail Joints



100% Solid Wood Casegoods



High Pressure Laminate Tops



www.uloft.com



JUNIOR LOFT

This setup is great for any room. The raised twin bed allows for open storage, and placement of a three drawer chest under the bed.

A. 10957-30 PEDESTAL DESK

- Pencil drawer with removable divider
 - Two left side drawers
 - Deep file drawer
 - Laminate top
- 42"W x 22"D x 30"H



B. 10302 DESK CARREL

- 19" Shelf clearance
- 40"W x 12 11/16"D x 23 15/16"H



C. 10PLY2 TWO POSITION CHAIR

Ply2 based chairs are designed to lean. Available with wood seat and back or upholstered. Ask about fabric options.

19 5/16"W x 22 11/16"D x 33"H



D. 10634-30 THREE DRAWER CHEST

- Laminate top
- 36 9/16"W x 22"D x 30"H



E. 10410 38" BED ENDS

One pair of twin size 'Tool-Less' 4 slat ladder style bed ends with 3" x 3" posts and adjustable settings. Includes 2 bunking pins.

Bed End: 41 1/4"W x 3"D x 34 1/2"H

Sized for 38" Mattress



F. 10796 WARDROBE

This wardrobe features two raised panel doors, two drawers, a clothes rod, and a grommet hole in the back panel.

- Metal Hanging Bar
 - Two 2/3 length, raised-panel doors
 - Two drawer base with top groove finger pulls
- 36 11/16"W x 22 1/16"D x 78 15/16"H

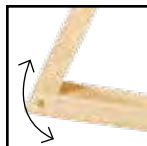


GO FROM JUNIOR TO OPEN LOFT IN MINUTES!



SOLID BED ENDS

Our bed posts are solid wood, allow for multiple bed height settings and are designed to stack.



BUILT TO TILT

The Two Position Chair was designed with the student in mind. Sometimes it's hard to keep all four legs on the ground. With the Two Position chair that's not a problem; it's built to tilt.

The Open Loft

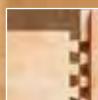
The Open Loft features 80" of work space underneath, making it the master of homework and study. This setup can quickly be converted to a bunk bed or twin bed.



3" x 3" Full Track Bed Post



100% Solid Wood Casegoods



Drawer Box Dovetail Joints



High Pressure Laminate Tops

OPEN LOFT

The Open Loft setup is ideal for sleep, study, and living. The raised bed allows space underneath for a Pedestal Desk and 3 Drawer Chest. The Desk and Chest are the same height creating a larger work surface.

A. 10957-30 PEDESTAL DESK

- Pencil drawer with removable divider
 - Two left side drawers
 - Deep file drawer
 - Laminate top
- 42"W x 22"D x 30"H



B. 10PLY2 TWO POSITION CHAIR

Ply2 based chairs are designed to lean. Available with wood seat and back or upholstered. Ask about fabric options.
19 5/16"W x 22 11/16"D x 33"H



C. 10634-30 THREE DRAWER CHEST

- Laminate top
- 36 9/16"W x 22"D x 30"H



D. 10410 38" BED ENDS

One pair of twin size 'Tool-Less' 4 slat ladder style bed ends with 3" x 3" posts and adjustable settings. Includes 2 bunking pins.
Bed End: 41 1/4"W x 3"D x 34 1/2"H
Sized for 38" Mattress



Hevea Brasiliensis, the timber used by ULC, in independent lab tests proved stronger than Northern Red Oak.



Guardrails are also available to add greater protection and they easily slide into place.

TWIN TO LOFT CONVERSION



x4 BUNKING PINS



x1 SET OF 2 BED ENDS



x2 STABILIZER RAILS



Did you know?

FIVE HEVEA BRASILIENSIS TREES GROWN, HARVESTED IN THE TIME ONE OAK TREE IS READY TO BE MILLED.

This demonstrates the sustainability of this natural resource. Although many logging companies are using forestry management practices now, which is a good start, it only includes planting 6 oak seedling trees for every one cut down. This provides an argument for those practicing this, that there are more trees than ever. Yet, it will still take at least 60 years for one of these trees to reach a harvestable diameter. In this time, 3 full-sized HB trees could be harvested and ready for production.

This is the best way to sustain a wood supply for continued furniture production without depleting the world's forests.

The Bunk Bed



3" x 3" Full Track Bed Post



Drawer Box Dovetail Joints



100% Solid Wood Casegoods



High Pressure Laminate Tops



www.uloft.com

BUNK BED

Ideal for tight spaces. Great by itself, adding under-bed storage, desk and chair will create a complete bedroom solution.

A. 10957-30 PEDESTAL DESK

- Pencil drawer with removable divider
 - Two left side drawers
 - Deep file drawer
 - Laminate top
- 42"W x 22"D x 30"H

**B. 10302 DESK CARREL**

- 19" Shelf clearance
- 40"W x 12 11/16"D x 23 15/16"H

**C. 10PLY2 TWO POSITION CHAIR**

Ply2 based chairs are designed to lean. Available with wood seat and back or upholstered. Ask about fabric options.

19 5/16"W x 22 11/16"D x 33"H

**D. 10624-30 TWO DRAWER CHEST**

- Stackable
 - Laminate top
- 36"W x 21 13/16"D x 18 13/16"H

**E. 10410 38" BED ENDS**

One pair of twin size 'Tool-Less' 4 slat ladder style bed ends with 3" x 3" posts and adjustable settings. Includes 2 bunking pins.

Bed End: 41 1/4"W x 3"D x 34 1/2"H

Sized for 38" Mattress

**4 TONS OF PRESSURE SEEMS EXTREME... NOT FOR OUR BEDS.**

In an independent lab test, EFT tested stronger than Northern Red Oak, and the results were measured in newtons as force, in which the meter showed LB/FT to demonstrate the force needed to pull a screw from the wood. EFT broke at 160 lbs. of pressure, while Northern Red Oak snapped at under 140 lbs. of pressure. This test proves that EFT is in fact stronger, more durable and able to withstand the rigors of extreme use without breaking down. Just look at this bunk bed hold up under the 4 tons of a cargo container placed on top of it.



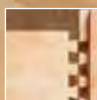
3" x 3" Solid wood bed post shown as actual size.

2.5" x 2.5" size post also available.

The Senior Crew



3" x 3" Full Track Bed Post



Drawer Box Dovetail Joints



100% Solid Wood Casegoods



High Pressure Laminate Tops

SENIOR CREW

Our Senior Crew is a creative twist to the standard Bunk Bed. It allows for a three or five drawer chest to be placed under the upper bunk.

A. 10410 BED 38" ENDS

One pair of twin size 'Tool-Less' 4 slat ladder style bed ends with 3" x 3" posts and adjustable settings. Includes 2 bunking pins.

Bed End: 41 1/4"W x 3"D x 34 1/2"H
Sized for 38" Mattress



B. 10307-30 BOOK CASE

- Laminate top
 - Two shelves
 - Grommet holes
- 30"W x 12"D x 29 15/16"H



C. 10624-30 TWO DRAWER CHEST

- Stackable
 - Laminate top
- 36"W x 21 13/16"D x 18 13/16"H



D. 10634-30 THREE DRAWER CHEST

- Laminate top
- 36 9/16"W x 22"D x 30"H



E. 10957-30 PEDESTAL DESK

- Pencil drawer with removable divider
 - Two left side drawers
 - Deep file drawer
 - Laminate top
- 42"W x 22"D x 30"H

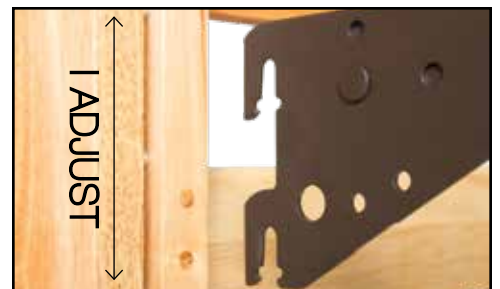


ADJUSTABLE

Our metal spring unit features a center support bar and 9 gauge, no-sag sinuous wire that ensure comfortable support.

THE TOOL-LESS SYSTEM™

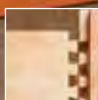
The Tool-Less System™ allows you to quickly go from one height to the next without the use of tools. Simply choose between the 11 height settings, place the spring or bedrail over steel dowels and tap with hand into place to lock, and with our steel bunking pins, quickly loft your bed into endless configurations.



The Super Crew



3"x 3" Full Track Bed Post



Drawer Box Dovetail Joints



100% Solid Wood Casegoods



High Pressure Laminate Tops



www.uloft.com



SUPER CREW

The Super Crew fits a lot of bed in a small space without compromising stability or safety. This setup leaves plenty of room for casegoods and storage.

A. 12410 BED 38" ENDS

One pair of twin size 'Tool-Less' 4 slat ladder style bed ends with 3" x 3" posts and adjustable settings. Includes 2 bunking pins.

Bed End: 41 1/4"W x 3"D x 34 1/2"H
Sized for 38" Mattress



B. 12635-12 FOUR DRAWER CHEST

- Laminate top
 - Ball-bearing glide drawers
- 32 1/8"W x 18 1/8"D x 37 11/16"H



C. 12634-12 THREE DRAWER CHEST

- Laminate top
 - Ball-bearing glide drawers
- 36 9/16"W x 22"D x 30"H



AS IF OFFICIAL TESTING WASN'T ENOUGH, THIS DRAWER HAS EVEN BEEN THROUGH THE REDNECK TEST

In an independent test, these good 'ole boys are suspended from a fork lift by a chain bolted through the front and back of a drawer.



For more information on safety, please reference the following resource:

<http://www.uloft.com/customer-care/safety-standards>



100% Solid Wood Casegoods

A. 10545SKD-14 COCKTAIL TABLE

Cocktail table with two drawers and wood top
38"W x 38"D x 16 15/16"H



B. 10540-30 SLED BASE COFFEE TABLE

- Open sides match RevLoc Upholstery group
 - Laminate top
- 36"W x 20 1/16"D x 16 1/8"H



Did you know?

It is the responsibility of all mankind to be good stewards of our planet, and at University Loft Company we take that very seriously. Our furniture is made from Environmentally Farmed Timber ensuring the natural beauty of the forest is preserved for all to enjoy. Independent lab studies have shown our farmed timber to be stronger than Northern Red Oak. We work with both Malaysian Timber Certification Council and the Forest Stewardship Council to ensure that we're not adding to the deforestation of our planet. Since 1994, over 1200 colleges and universities have gone green by partnering with University Loft Company.



www.uloft.com

ENDLESS POSSIBILITIES

University Loft Company is proud to present a solid wood, modular design and Tool-Less Bed System™. The Graduate Series offers residents unique options to optimize space, storage, and function to meet any need.

BED ENDS AND SPRING UNITS: CHOOSING THE RIGHT SIZE

ULC offers four options for twin size beds. Listed below are the combinations of bed ends and spring units. With any option, multiple configurations are possible.

Option A

10410 + SP105 = 38 x 80 Twin

Option C

10401 + SP101 = 36 x 80 Twin

Option B

10410 + SP106 = 38 x 76 Twin

Option D

10401 + SP100 = 36 x 76 Twin



ONE COMMON SIZE

Ease of assembly provides for multiple configurations. Some additional parts are required for certain bed setups. For help with bed conversions, contact your representative today.



GRADUATE NATURAL CASEGOODS

A. 10302 DESK CARREL
40"W x 12 11/16"D x 23 15/16"H

A.



B.



C.



D. 10624-30 2 DRAWER CHEST
36"W x 21 13/16"D x 18 13/16"H

D.



E.



F.



E. 10634-30 THREE DRAWER CHEST
36 9/16"W x 22"D x 30"H

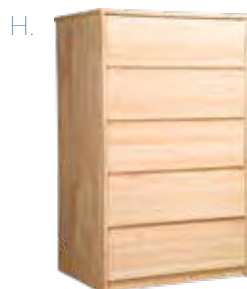
F. 10628-30 FOUR DRAWER CHEST
32 1/8"W x 18 1/8"D x 37 9/16"H

G. 10373 NIGHTSTAND
19 1/4"W x 14 1/4"D x 24"H

G.



H.



I.



H. 10638 FIVE DRAWER CHEST
29 9/16"W x 21 13/16"D x 47 3/8"H

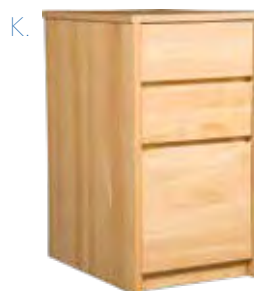
I. 10957-30 PEDESTAL DESK
42"W x 22"D x 30"H

J. 10955 WRITING DESK
36 9/16"W x 22"D x 30"H

J.



K.



L.



K. 10388 MOBILE PEDESTAL
17 7/8"W x 22"D x 30"H

L. 10956 WRITING DESK
42"W x 22"D x 30"H

M. 10951 WRITING DESK
42"W x 23 3/4"D x 30"H

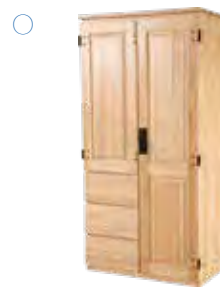
M.



N.



O.



N. 10796 WARDROBE
36 11/16"W x 22 1/16"D x 78 15/16"H

O. 10784 WARDROBE
36"W x 24"D x 72"H

GRADUATE WILD CHERRY CASEGOODS

A.



B.



C.



A. 12302.2 DESK CARREL
40"W x 13 3/4"D x 23 15/16"H

B. 12305 BED SHELF
32 7/8"W x 10 3/4"D x 9 3/8"H

C. 12307-12 BOOKCASE
30"W x 12"D x 30 1/16"H

D.



E.



F.



D. 12624-12 TWO DRAWER CHEST
36"W x 21 13/16"D x 18 13/16"H

E. 12634-12 THREE DRAWER CHEST
36 9/16"W x 22"D x 30"H

F. 12628-12 FOUR DRAWER CHEST
32 1/8"W x 18 1/8"D x 37 9/16"H

G.



H.



I.



G. 12373-12 NIGHTSTAND
19 1/4"W x 14 1/4"D x 24"H

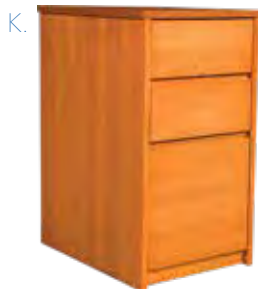
H. 12638-12 FIVE DRAWER CHEST
29 9/16"W x 21 13/16"D x 47 3/8"H

I. 12957-12 PEDESTAL DESK
42"W x 22"D x 30"H

J.



K.



L.



J. 12792-12 ENTERTAINMENT CENTER
31"W x 22"D x 47 1/4"H

K. 12388 MOBILE PEDESTAL
17 7/8"W x 22"D x 30"H

L. 12956-12 WRITING DESK
42"W x 22"D x 30"H

M.



M. 12796 WARDROBE
36 11/16"W x 22 1/16"D x 78 15/16"H

CUSTOM WARDROBES

Combining storage and functionality are the best attributes of a wardrobe. With shelves or a hanging rod, our wardrobe can be used for an entertainment center, a closet, or even a desk unit. Featuring the same proven construction features as our other casegoods, with added aesthetic touches like raised panel doors and locks, these wardrobes will stand the test of time.



10796 WARDROBE



10707 SECRETARY UNIT

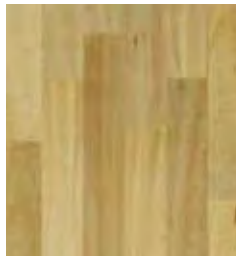
STANDARD FEATURES



Our wardrobes signify the quality ULC is known for. Floating design of raised panel doors allow for all door components to be solid wood. They are separate from the door construction and designed to prevent warping.

Doors are comprised of the same material, thus providing an exact match to other pieces in the unit.

Our wardrobes have an anti-warping back, parquet construction and ultra thick doors.



Metal hinge allows the doors to rotate 270 degrees and fold all the way back along the sides.



Two grommet holes in the back panel provide electrical cord pass-through.

Finished back panel provides a protective moisture barrier and is inserted into panels with dado grooves.

AVAILABLE OPTIONS:

- Drawer Removed
- Door Removed
- Casters
- Surge Protected Outlet with optional Phone Jack
- Mirror
- Top Bottom Corner Blocks
- Towel Bar
- Center Divider
- Adjustable Shelves
- Clothes Rod
- ADA Compliant
- Wide Selection of Handles
- Custom Wardrobes Available

AVAILABLE HANDLE OPTIONS



Available Hasp Lock



Cam locking Drawers

LOCKING HANDLE



ITEM# HW005

- Locking handle set used on wardrobes
- Handle is on right door of wardrobe and turns counter-clockwise
- Metal with a black finish



FEATURES & BENEFITS

Using the best construction methods available, University Loft Company builds the longest-lasting, most durable casegoods on the market. From top to bottom, everything about a ULC casegood is strong. Built completely of solid hardwood, these casegoods will stand the test of time.

CONSTRUCTION METHODS

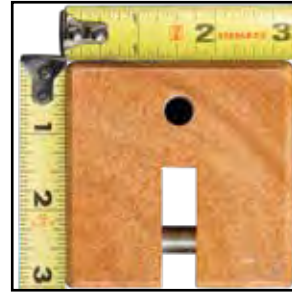
- Frame-in-frame construction
- Full-length back panel with 1/4" Dado
- Minimum 3/4" sides
- Mortise & Tenon joint frame
- Corner blocks
- Adjustable foot glides
- English dovetail drawers

LAMINATE & FINISHES

- High pressure laminate tops provide protection against moisture and dents
- All sides are stained and sealed

DRAWER CONSTRUCTION

- Drawer boxes are constructed with English dovetail joints
- Full-extension drawer glides
- All drawers are constructed with 4 corner blocks
- Stretchers under drawers for added bottom support
- Finger pulls on all drawers - top and bottom



Solid wood bed posts are designed to be stacked and allow multiple bed heights



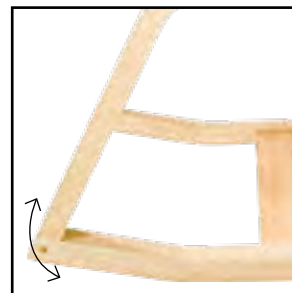
The bed end features 4 slats and multiple bed height settings.



All wood Guardrails and Bedrails are available



Drawer boxes are constructed with English dovetail joints



Two Position Chairs are built to tilt



Full Extension Drawer Glides



Drawer Bottom Supports



Frame-in-Frame Construction



Full Length Back Panel with 1/4" Dado Minimum 3/4" Wood Sides



Corner Blocks Adjustable Foot Glides



High pressure laminate tops provide protection against moisture & dents



Full extendable drawers with heavy-duty glides & finger pulls



Mortise & Tenon Joint Frame



All drawers are constructed with 4 corner blocks

The Jericho Open Loft



Recycled Steel Construction



High Pressure Laminate



Recessed Locks



Adjustable Height



www.uloft.com

**A. 50449 BED END**

Metal twin sized bed ends with 4 slats and adjustable height settings.
40 5/32"W x 1 1/2"D x 34 1/2"H

**B. THREE DRAWER CHEST**

- Recessed hasp lock
 - Laminate top and drawer face
 - Hooded drawer pulls
- 30"W x 22"D x 30"H

**C. PEDESTAL DESK**

- Recessed hasp lock
 - Laminate top and drawer face
 - Hooded drawer pulls
- 45"W x 24"D x 30"H

**D. DESK CARREL**

Metal desk carrel with one computer monitor shelf, corkboard backing and task light.

- 19" Shelf clearance
 - Cork board and task light (optional)
 - Cord pass-through
- 42"W x 10"D x 24"H

**E. TV CONSOLE**

- Two doors with fixed shelf, coat hooks and clothes rod mounted below fixed shelf
 - 3-Point Military locking handle (optional)
 - 3" x 5" Name card slot
- 36"W x 24"D x 80"H

**F. TWO DRAWER CHEST**

- Recessed hasp lock
 - Laminate top
- 34"W x 24"D x 18"H



The Jericho Open Loft



Recycled Steel Construction



High Pressure Laminate



Recessed Locks



Adjustable Height

**A. 50449 BED END**

Metal twin sized bed ends with 4 slats and adjustable height settings.
40 5/32"W x 1 1/2"D x 34 1/2"H

**B. THREE DRAWER STORAGE UNIT**

- Recessed hasp lock
 - Laminate top and drawer face
- 34"W x 24"D x 18"H

**C. WRITING DESK**

- Laminate top
 - Hooded drawer pulls
- 45"W x 24"D x 30"H

**D. DESK CARREL**

Metal desk carrel with one computer monitor shelf, corkboard backing and task light.

- 19" Shelf clearance
 - Cork board and task light (optional)
 - Cord pass-through
- 42"W x 10"D x 24"H

**E. WARDROBE**

- Two doors with fixed shelf, coat hooks and clothes rod mounted below fixed shelf
 - 3-Point Military locking handle (optional)
- 36"W x 24"D x 80"H

**F. TWO DRAWER CHEST**

- Recessed hasp lock
 - Laminate top
- 34"W x 24"D x 18"H



The Junior Loft



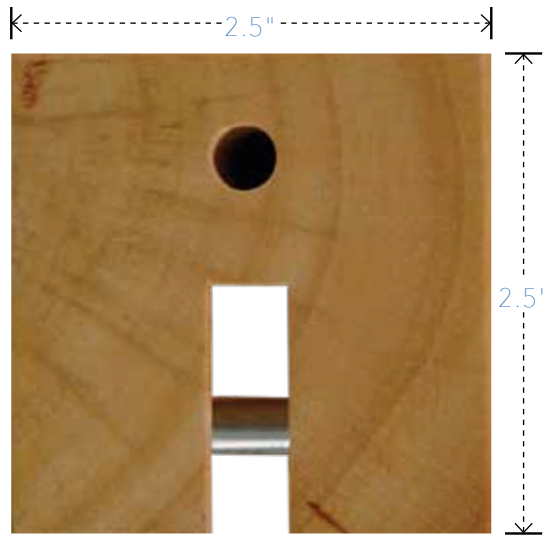
Solid Wood Posts



Engineered Wood



Metal Drawer Boxes



Solid wood bed post shown as actual size.

GREENFIELD JUNIOR LOFT

The Greenfield Junior Loft setup, like its predecessor from the Graduate Series is great for any room. The value engineered bed ends have been slimmed down, but have not sacrificed strength or quality. All casegoods are constructed from high performance engineered wood.

A. 10408 BED ENDS

One pair of twin size 'Tool-Less' 3 slat ladder style bed ends with 2 1/2" x 2 1/2" posts and 4 height settings. Includes 2 bunking pins.

Bed End: 40 3/4"W x 2 1/2"D x 35 1/2"H



B. 91911-27.1 PEDESTAL DESK

- Pencil drawer
 - Two left side drawers
 - Deep file drawer
- 42"W x 22"D x 30"H



C. 10PLY2 TWO POSITION CHAIR

Ply2 based chairs are designed to lean. Available with wood seat and back or upholstered. Ask about fabric options.

19 5/16"W x 22 11/16"D x 33"H



D. 91613-27.1 THREE DRAWER CHEST

- Heavy duty metal drawer box
- 36 3/8"W x 22"D x 30"H



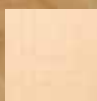
TWIN TO LOFT CONVERSION

Engineered to transform from Twin bed to Open Loft quickly and easily. Simply adding 4 bunking pins, 2 stabilizer rails and a second set of bed ends will increase living space in any room.

The Bunk Bed



Solid Wood Posts



Engineered Wood



Metal Drawer Boxes

GREENFIELD BUNK BED

Ideal for tight spaces. Great by itself, adding under-bed storage, desk and chair will create a complete bedroom solution. The value engineered bed ends have been slimmed down, but have not sacrificed strength or quality. All casegoods are constructed from high performance engineered wood.

A. 12408 BED ENDS

One pair of twin size 'Tool-Less' 3 slat ladder style bed ends with 2 1/2" x 2 1/2" posts and 4 height settings. Includes 2 bunking pins.
Bed End: 40 3/4"W x 2 1/2"D x 35 1/2"H



B. 92302 DESK CARREL

- 19" Shelf clearance

40"W x 12 11/16"D x 23 15/16"H



C. 92912-12 WRITING DESK

- Full width pencil drawer
- Heavy duty metal drawer box

42"W x 22"D x 30"H



D. 12PLY2 TWO POSITION CHAIR

Ply2 based chairs are designed to lean. Available with wood seat and back or upholstered. Ask about fabric options.
19 5/16"W x 22 11/16"D x 33"H



E. 92612 TWO DRAWER CHEST

- Stackable
- Heavy duty metal drawer box

36"W x 21 13/16"D x 18 13/16"H



F. 92711 WARDROBE

- Clothes rod for hanging clothes
- Heavy duty metal drawer box

36 3/8"W x 22 3/16"D x 72"H



GREENFIELD SERIES CASEGOODS



A.



B.



C.

A. 91302 DESK CARREL
40"W x 13"D x 24"H

B. 91307-27 BOOKCASE
30"W x 12"D x 29 15/16"H

C. 91373-27 NIGHTSTAND
17 3/4"W x 14 1/4"D x 24"H



D.



E.



F.

D. 91388-27 PEDESTAL
15 1/4"W x 22 3/16"D x 30"H

E. 91646-30 TWO DRAWER CHEST
36"W x 22"D x 18 3/8"H

F. 91632 THREE DRAWER CHEST
30 3/8"W x 22"D x 30"H



G.



H.



I.

G. 91911-27.1 PEDESTAL DESK
42"W x 22 3/16"D x 30"H

H. 91956 WRITING DESK
*Available without drawer for ADA requirements.
42"W x 22"D x 30"H

I. 91711 WARDROBE
36 3/8"W x 22 3/16"D x 72"H



DESK SOLUTIONS

The writing desk, carrel and pedestal make a great combination especially when paired with the two position chair.

STACKABLE CHEST

Our two drawer chest is built to fit side-by-side underneath a bed, or to be stacked as a four drawer unit.



LAMINATE FINISH OPTIONS



KENSINGTON MAPLE



WILD CHERRY



MIDNIGHT ESPRESSO

CRESCENT HANDLE OPTIONS



BLACK



BRUSHED NICKEL

THE GREENFIELD SERIES

University Loft Company sets the standard in high performance engineered wood casegood construction with the introduction of the Greenfield Series. With features such as high pressure laminate tops, PVC edge banding, and metal drawer boxes with integrated heavy duty slides, the Greenfield Series is sure to provide lasting quality and durability.

In addition to high quality products, University Loft Company maintains its commitment to environmentally sound manufacturing practices by complying with Phase 2 CARB (California Air Resources Board) standards. Phase 2 CARB standard regulates that the maximum emission level of formaldehyde from particle board is not to exceed 0.09 ppm.

CONSTRUCTION STANDARDS

HIGH PERFORMANCE ENGINEERED WOOD:

The Greenfield items are fully laminated and banded to ensure a full barrier with long, reliable use in an institutional application.

CONSTRUCTION / ASSEMBLY:

Each piece of the Greenfield Series is carefully assembled using solid hardwood dowels and efficient connection hardware. All exposed edges of panels are protected with 2mm PVC edge banding.

DRAWERS:

Drawers feature metal drawer side panels with integrated heavy duty slides with 5/8" thick laminate bottom and back panel. 3/4" drawer fronts are to be recessed into side panels. Drawer slides are rated at a 100lb static load.

TOP:

The top is constructed of 3/4" engineered wood with .030 high pressure laminate which provides protection against moisture and impact. All edges are banded with 2mm PVC edge to protect against side impact.



Drawers feature 100lb test metal drawer side panels

BED ENDS

One pair of twin size 'Tool-Less' 3 slat ladder style bed ends with 2 1/2" x 2 1/2" posts and 4 height settings. Includes 2 bunking pins.

10406 / 12406 BED ENDS

Bed End: 38 3/4"W x 2 1/2"D x 34 1/2"H

10408 / 12408 BED ENDS

Bed End: 40 3/4"W x 2 1/2"D x 35 1/2"H



The Greenfield Bed End has 3 tracks in which to position bed rail or spring unit.



WARDROBE FEATURES

- Metal clothes rod
- Hinges allow doors to rotate 270° and rest flat against the sides
- 2 heavy duty drawers





SAFETY FIRST WITH FURNITURE BUILT TO LAST

AT ULC, OUR FURNITURE STANDARDS BEGIN AND END WITH SAFETY IN MIND

Safety matters at home and away. It matters to students, their parents, and of course it matters to us at University Loft Company. That's why we design every ULC product with safety in mind and build them to withstand the rigors of use year after year. Let's take a closer look at some of the design, construction and usage safety standards we meet or exceed on your behalf:

OUR COMMITMENT TO BED SAFETY HELPS YOU REST EASY

University Loft Company's beds meet the U.S. Consumer Product Safety Commission (CPSC) Requirements regarding Child Safety Standards for entrapment and guardrail safety. These U.S. Federal Regulations - which appear in CFR Title 16, Parts 1213, 1500 and 1513 - were enacted in July 2000 to help reduce the approximately 10 deaths per year attributed to entrapment in child or adult bunk beds.

The requirements mandate that the distance between spreaders rails on bed ends must be close enough to prevent the pass-thru of a 3.5" x 6.2" block, OR large enough to permit the passage of a 9" diameter sphere (roughly the space needed to withdraw a child's head). University Loft beds meet these federal requirements.

Our beds are built with several other important safety features.

For example, our standard bed end posts are 3" x 3". This post size offers greater surface-to-surface contact area for added stability and sturdiness. Also, unlike some manufacturers, our bed ends feature four spreader rails. The extra rail means stronger construction for enhanced safety and durability.

SPECIAL BUNK BED SAFETY RULES CALL FOR SPECIAL CARE

The CPSC defines a bunk bed as "any bed in which the underside of the foundation (i.e., sleep surface) is over 30" from the floor." The Commission requires that any bunk bed must have at least two upper bunk guardrails, one on either side of the bed. Beds from University Loft Company meet these criteria when configured with wood rails/decks or spring units and matching guardrails at the appropriate height placement.

However, even if the bed originally started out less than 30" from mattress bottom to the floor, you are still subject to the guardrail requirements if the bed is adjusted upward, as it would then be classified a "bunk bed". To help you understand and maintain compliance with these regulations, University Loft Company now places a warning label on each bed end. Do not remove these warning labels. What's more, we encourage you to check for their presence when doing a yearly inventory review.

CLIMBING THE LADDER TO SAFER TOP BUNK USAGE

University Loft bunk beds are designed so that the bed ends can

WARNING	
TO HELP PREVENT SERIOUS OR FATAL INJURIES FROM ENTRAPMENT OR FALLS	
<p>Never allow a child less than 6 years of age on upper bunk.</p> <p>Use only mattress meeting the following specifications: Standard length: 74" - 75" width: 53 1/2" - 54 1/2" Extra long length: 79" - 80" width: 53 1/2" - 54 1/2" Ensure thickness of mattress foundation combined does not exceed 9" and the mattress is at least 5" below upper edge of guardrail.</p> <p>Use guardrails on both sides of upper bunk. Use ladder or ladder end for entering or leaving the upper bunk.</p> <p>Strangely Hazard: Never attach or hang items to any part of the bunk bed that is not designed for use with the bed for example but not limited to jump ropes, hooks and belts.</p>	
<p>Certification:</p> <p>This bed arrangement has been tested to government and independent laboratory standards and meets all federal, retail, and academic standards as of 2008.</p> <p>This bunk bed is in compliance with ASTM F-1427-07 standard government code of federal regulations 1213 and 1513, for more information on testing visit www.uloc.com</p>	
DO NOT REMOVE LABEL	

GET SAFETY LABELS FOR YOUR BEDS

To help you accomplish a higher level of safety management, we can ship safety labels you can apply to your existing beds to signify that they do not meet current standards and should only be used by adults. Please contact your ULC project manager or sales representative for a consultation or to place your order for these free labels.

be used as ladders to access the top bunk. However, some room configurations, space restrictions or other conditions might make bed-end access impossible or unwise. In those cases, ULC also makes bunk bed ladders designed for use with our loft beds and bunks. These ladders feature warning labels



describing proper usage, including exact pin positions for upper bunk springs and rails relative to the ladder placement. For safe use of ladders with loft bed configurations, ULC strongly urges compliance with the label instructions so that our safety standards are met and our warranty policy remains valid.

REGULAR RISK MANAGEMENT OVERSIGHT CAN KEEP YOUR INSTALLATIONS SAFER

The above standards, regulations and usage recommendations are



excellent safety guidelines that can serve every bed installation well. The fact is, however, that CPSC mandates do not actually apply to institutional use (e.g., dormitories, military facilities or prisons). So why does University Loft feel so strongly about following these guidelines? While most higher education institutions are exempt from these standards for normal operations, we believe that the uninformed or improper use of beds in an institutional setting could result in unnecessary exposure to risk. And while most colleges and universities have controls in place to monitor student use of campus furniture, but we encourage risk management oversight when visitors are on campus as well. ULC also recommends that our customer institutions consult regularly with a Risk Management expert to monitor usage, update controls and limit exposure and liability. Simply put, we want your resident students or campus visitors to be safe, and your institution to be protected.

OUR PAINTS AND FINISHES ARE SAFE... AND EASY ON THE EYES

Due to recent reports of excessive lead contents in finishes from products manufactured in Asia, University Loft Company would like to remind you that we are committed to constructing high-quality, durable, and most importantly, safe, products. In fact, we've made it our mission to ensure the furniture you receive has been rigorously tested to meet all safety standards and regulations. Your safety – together with the safety of those using or visiting your institution – is our number one priority.

When it comes to our attractive and durable finishes, University Loft Company products are compliant with 16 CFR, Part 1303 for lead content as it pertains to furniture intended to be used by children. Our products have been tested and certified by Data Chem



Laboratories, Inc. Copies of these test certificates are available for review upon request.

SAFETY IS IN THE VERY FABRIC OF UNIVERSITY LOFT FURNITURE

All fabrics used by University Loft Company in our upholstered items have been tested and proven flame retardant. The foam filling and padding used to construct our upholstered furniture meet the requirements of the California Bureau of Home Furnishings Technical Bulletin No. 117. Passing the CAL 117 test ensures that fabrics will not catch fire if exposed to a smoldering cigarette or small open flame.

In addition, we offer on-request testing for custom-made ULC furniture to meet CAL TB-133 flammability requirements. This certification requires special foam with a fire-resistant barrier material between the foam and the outer fabric. We employ this type of construction for furniture to be used in public seating areas such as hotels, universities, and other high-traffic common areas.



OUR CHAIRS STAND UP TO BIFMA STANDARDS

Business and Institutional Furniture Manufacturers Association (BIFMA) is comprised of furniture manufacturers dedicated to the development of voluntary product safety and performance standards and test methods. All of University Loft's office chairs meet or exceed BIFMA standards.



EVERYDAY WEAR AND TEAR? ULC FURNITURE PASSES THE TEST.

How do you measure furniture hardness and durability? At ULC we use the Janka hardness test, which measures the force required to embed a .444 inch steel ball to half its diameter in wood. This is one of the best measures of the ability of wood



species to withstand denting and wear. It's also a good indicator of how hard a species is to saw or nail. University Loft Company's Environmentally-Farmed Timber withstood pressure to 160 lbs. as opposed to the Northern Red Oak sample which failed at 140 lbs. This test serves as evidence that University Loft's EFT is stronger, more durable and able to withstand the rigors of everyday use without breaking down.

BRINGING YOUR CAMPUS UP TO THESE STANDARDS

As a leading youth-oriented furniture manufacturer since 1986, University Loft Company wants the very best for the young users of our furniture, and for our educational and institutional partners. Our products have been designed and constructed to meet or exceed the rigorous standards and testing required for the retail market. So by choosing University Loft Company to be your furniture provider, you take important steps toward voluntary compliance that can keep your students safer AND help reduce potential liability and exposure for your institution.

What's more, when you partner with a responsible manufacturer like University Loft, it's likely that your disaster recovery plans, product liability coverage and risk mitigation programs are more easily accomplished.

We know that it might not be realistic to replace all beds on your campus to meet these safety standards. A good first step toward enhancing safety, however, is to design, implement and manage a prudent risk management program, including furniture usage guidelines in accordance with the standards University Loft follows and recommends. After all, safety does matter. For all of us.

Need help making sure your installations are safe? Contact us today at 800.423.LOFT (5638)!

The Twin Bed



100% Solid Wood Drawer Faces

Recycled Steel Frame

High Pressure Laminate Tops

Drawer Box Dovetail Joints



A. 51974-30 TABLE DESK

Metropolitan Table Desk with metal frame, laminate top and lower shelf.

47"W x 24"D x 30"H



B. 50449 BED END

Metal twin sized bed ends with 4 slats and adjustable height settings.

40 5/32"W x 1 1/2"D x 34 1/2"H



C. 51629-30 FOUR DRAWER CHEST

Metropolitan Series Four Drawer chest with the option to unstack into 2 pieces.

36 1/4"W x 17 15/16"D x 39 3/16"H



D. 51FC02 DESK CHAIR

Metal two position desk chair with teardrop back and bentwood seat.

17 1/8"W x 21 5/8"D x 33 11/16"H



CONSTRUCTION METHODS

- Slide expansion joint construction
- 1.2mm thickness with expected life of 30 years
- Replaceable parts - individual parts are replaceable on every item produced

JOINTS & WELDING

- Expansion Lock design joints
- All mechanisms cover and secure hardware in a blind fashion
- Non-structural spot welded joints
- Structural welds are full 360° welds
- All welds cleaned, polished, and sanded for a smooth uniform look before finishing

STEEL

- ASTM A366 standard low carbon steel, the highest-grade carbon quality available
- Commercial grade quality cold-rolled sheet grade conforming to international standards

FINISH

- Electrostatically applied utilizing environment friendly, state of the art, painting processes
- Minimum of 10-year manufacturer warranty for peeling and chipping
- Finish markers for touch-up can be supplied at customer's request

OPEN SURFACES

- All open surfaces have heavy-duty gauged black plastic inserts on any exposed floor surface
- Securely fastened in accordance for heavy-duty institutional use
- All sides are stained and sealed

DRAWER CONSTRUCTION

- Dovetailed LVL Plywood
- 5 Sided finished drawer box
- 100lb test ball-bearing drawer glides

The Junior Crew



100% Solid Wood Drawer Faces



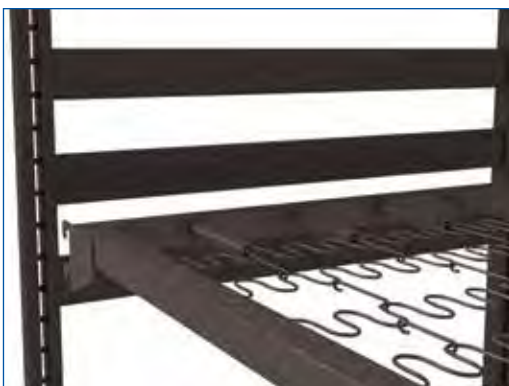
Recycled Steel Frame



High Pressure Laminate Tops

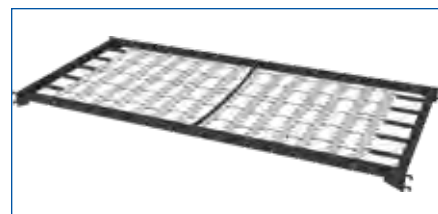


Drawer Box Dovetail Joints



THE TOOL-LESS™ SYSTEM

The Tool-Less System allows you to quickly go from one height to the next without the use of tools. Simply choose between the 11 height settings, place the spring or bed rail over steel dowels and tap with hand into place to lock.



Our metal spring unit features a center support bar and 9-gauge, no-sag sinuous wire that ensure comfortable support.



A. 50449 BED END

Metal twin sized bed ends with 4 slats and adjustable height settings.

40 5/32"W x 1 1/2"D x 34 1/2"H



B. 51629-30 FOUR DRAWER CHEST

Metropolitan Series Four Drawer chest with the option to unstack into 2 pieces.

36 1/4"W x 17 15/16"D x 39 3/16"H



C. 50974-30 TABLE DESK

Metropolitan Table Desk with metal frame, laminate top and lower shelf.

47"W x 24"D x 30"H



D. 50FC02 DESK CHAIR

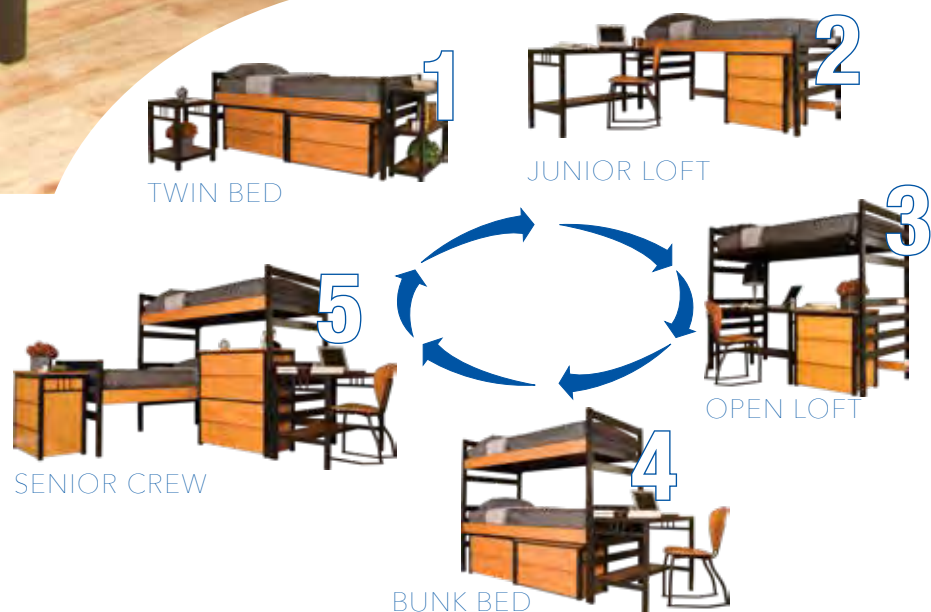
Fiji style two position desk chair with bentwood seat and back.

17 1/8"W x 21 5/8"D x 33 11/16"H



ONE COMMON SIZE

Ease of assembly provides for multiple configurations. Some additional parts are required for certain bed setups. For help with bed conversions, contact your representative today.



The Open Loft



100% Solid Wood Drawer Faces



Recycled Steel Frame



High Pressure Laminate Tops



Drawer Box Dovetail Joints



www.uloft.com



A. 51974-30 TABLE DESK

Metropolitan Table Desk with metal frame, laminate top and lower shelf.

47"W x 24"D x 30"H



B. 50449 BED END

Metal twin sized bed ends with 4 slats and adjustable height settings.

40 5/32"W x 1 1/2"D x 34 1/2"H



C. 51629-30 FOUR DRAWER CHEST

Metropolitan Series Four Drawer chest with the option to unstack into 2 pieces.

36 1/4"W x 17 15/16"D x 39 3/16"H



D. 51FC02 DESK CHAIR

Metal two position desk chair with teardrop back and bentwood seat.

17 1/8"W x 21 5/8"D x 33 11/16"H



E. 51388-30 MOBILE PEDESTAL

The Metropolitan mobile pedestal fits easily under the table desk and features a full length file drawer.

17"W x 22"D x 25 1/2"H



SAFETY FIRST

Our bed end is constructed with several safety features. First, the post is 1.5" x 2", offering greater surface to surface contact for improved sturdiness. The distance between spreader rails is small enough to prevent passage of a 3.5" x 6.2" block or large enough to permit the passage of a 9" diameter sphere which is roughly the space needed to withdraw a child's head.



The Bunk Bed



100% Solid Wood Drawer Faces



Recycled Steel Frame



High Pressure Laminate Tops



Drawer Box Dovetail Joints



www.uloft.com



A. 51974-30 TABLE DESK

Metropolitan Table Desk with metal frame, laminate top and lower shelf.

47"W x 24"D x 30"H



B. 50449 BED END

Metal twin sized bed ends with 4 slats and adjustable height settings.

40 5/32"W x 1 1/2"D x 34 1/2"H



C. 51629-30 FOUR DRAWER CHEST

Metropolitan Series Four Drawer chest with the option to unstack into 2 pieces.

36 1/4"W x 17 15/16"D x 39 3/16"H



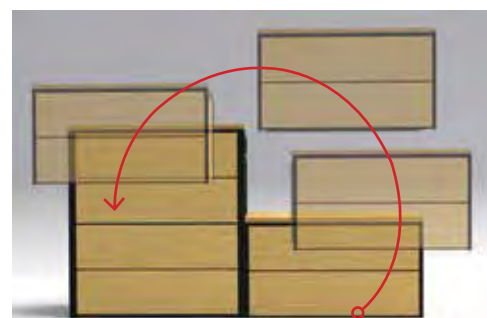
D. 51FC02 DESK CHAIR

Metal two position desk chair with teardrop back and bentwood seat.

17 1/8"W x 21 5/8"D x 33 11/16"H



Guardrails are also available to add greater protection while you sleep. They are built to easily slide into place in the bed end post.



PLACE DRAWERS SIDE-BY-SIDE OR STACKED FOR MAXIMUM STORAGE

The Senior Crew



100% Solid Wood Drawer Faces



High Pressure Laminate Tops



Recycled Steel Frame



Drawer Box Dovetail Joints



www.uloft.com



A. 50449 BED END

Metal twin sized bed ends with 4 slats and adjustable height settings.

40 5/32"W x 1 1/2"D x 34 1/2"H



B. 50629-12 FOUR DRAWER CHEST

Metropolitan Series Four Drawer chest with the option to unstack into 2 pieces.

36 1/4"W x 17 15/16"D x 39 3/16"H



C. 50974-12 TABLE DESK

Metropolitan Table Desk with metal frame, laminate top and lower shelf.

47"W x 24"D x 30"H

D. 50303 DESK CARREL

Metropolitan Desk Carrel with metal frame, laminate top and shelf.

47"W x 24"D x 30"H



D. 50FC02 DESK CHAIR

Fiji style two position desk chair with bentwood seat and back.

17 1/8"W x 21 5/8"D x 33 11/16"H



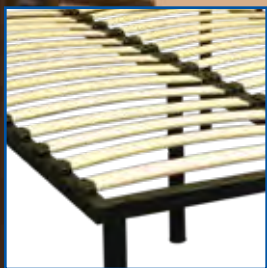
F. 50568-12 NIGHT STAND

This night stand features two high-pressure laminate shelves for bedside storage.

18"W x 18"D x 24"H



The Full Slat Bed



METROPOLITAN SLAT BEDS

Our Metropolitan slat bed is a great sleeping solution. Comprised of wood slats that are spring loaded, they provide the support and bounce that a box spring would. These beds are offered with three different leg heights. Placing the bed on higher legs will allow for storage under the bed. No box spring is necessary with slat beds from University Loft. Available in Twin and Full sizes.



100% Solid Wood Drawer Faces



High Pressure Laminate Tops



Recycled Steel Frame



Drawer Box Dovetail Joints



A. 50480KD HEADBOARD

Metal frame headboard with laminate panel for full-size slat bed.
54"W x 1 1/2"D x 26"H



B. 50205KD SLAT BED

80" full size slat bed with metal base, wooden veneer slats and 23" legs.
54"W x 81 1/2"D x 24 1/2"H



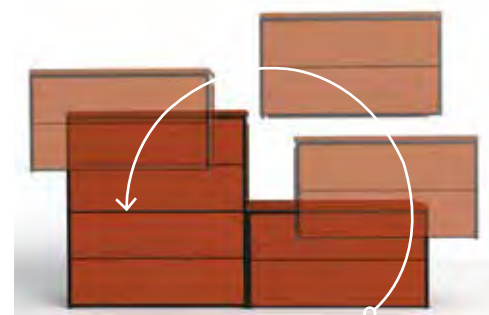
C. 50629-12 FOUR DRAWER CHEST

Four drawer chest with the option to unstack. Drawers include ball-bearing slides and top finger pull.
31 1/2"W x 15 3/4"D x 37 13/16"H



D. 50568-12 NIGHT STAND

This night stand features two high pressure laminate shelves for bedside storage.
18"W x 18"D x 24"H



PLACE DRAWERS SIDE-BY-SIDE OR STACKED FOR MAXIMUM STORAGE

The Uptown Series



100% Solid Wood Drawer Faces



Recycled Steel Frame



High Pressure Laminate Tops



Drawer Box Dovetail Joints



THE UPTOWN SERIES

The Uptown series is designed to maximize durability while creating a modern, clean look. Multiple color options allow you to customize your furniture to perfectly compliment your property's color scheme. Product highlights include ball bearing drawer glides, high pressure laminate tops, and wood drawer boxes for the chest and mobile pedestal.

Manufactured from metal and laminate, this line stands up to the harsh environment of a student apartment, yet simultaneously provides the stylish setting students look for. The Uptown comes standard with a five year warranty. The standard lead time is 120 days.

Please contact your Territory or Project Manager for additional information on this product line or any of our other styles and series to see how they can work for your property.

A. 42973-54 TABLE DESK

Uptown Series table desk with metal frame and laminate top. 47"W x 24"D x 30 3/4"H



B. 42FC02 DESK CHAIR

Two position teardrop chair with bentwood seat and back. 17 1/8"W x 21 5/8"D x 33 11/16"H



C. 42568-54 NIGHTSTAND

Nightstand with laminate top and laminate shelf and metal frame. 18"W x 18"D x 24 3/4"H



D. 42480-54 HEADBOARD

Uptown Series metal frame headboard with laminate panel for full-size slat bed. 54"W x 1 1/2"D x 26"H



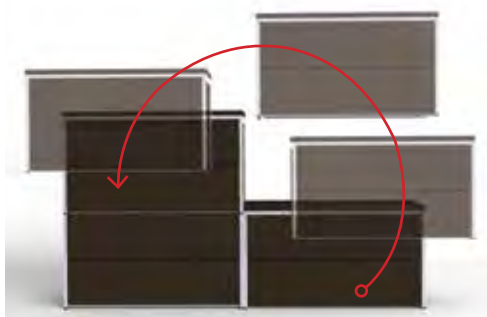
E. 42649-54 FOUR DRAWER CHEST

Four drawer chest with the option to unstack. Drawers include ball-bearing slides and top finger pull. 31 1/2"W x 15 3/4"D x 37 13/16"H



F. 50205SKD SLAT BED

80" full size slat bed with metal base, wooden veneer slats and 23" legs. 54"W x 81 1/2"D x 24 1/2"H



PLACE DRAWERS SIDE-BY-SIDE OR STACKED FOR MAXIMUM STORAGE

The Uptown Series



100% Solid Wood Drawer Faces



Recycled Steel Frame



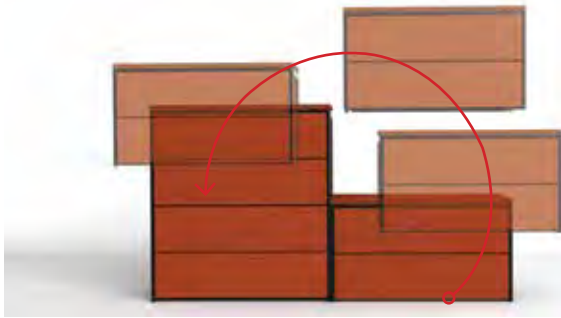
High Pressure Laminate Tops



Drawer Box Dovetail Joints



www.uloft.com



PLACE DRAWERS SIDE-BY-SIDE OR STACKED
FOR MAXIMUM STORAGE

A. 44480-57 HEADBOARD

Uptown Series metal frame headboard with laminate panel for full-size slat bed.
54"W x 1 1/2"D x 26"H



B. 50205SKD SLAT BED

80" full size slat bed with metal base, wooden veneer slats and 23" legs.
54"W x 81 1/2"D x 24 1/2"H



C. 44649-57 FOUR DRAWER CHEST

Four drawer chest with the option to unstack. Drawers include ball-bearing slides and top finger pull.
31 1/2"W x 15 3/4"D x 37 13/16"H



D. 44973SKD-57 TABLE DESK

Table Desk with metal frame and laminate top.
47"W x 24"D x 30 3/4"H



E. 44764SKD-57 ENTERTAINMENT CENTER

Three shelf entertainment center with metal frame and wild cherry laminate.
50"W x 20"D x 24"H



F. 44562SKD-57 COFFEE TABLE

Uptown Series Coffee Table with black metal frame and laminate top.
41 1/2"W x 24"D x 17 3/4"H



G. 44560SKD-57 END TABLE

Uptown Series End Table with black metal frame and laminate top.
24"W x 24"D x 22 1/4"H



The Meridian Series



100% Solid Wood



High Pressure Laminate Tops



www.uloft.com



MERIDIAN SERIES

The Meridian Collection features a rich finish and straight lines to create a sophisticated atmosphere perfect for an upscale environment. The select solid woods and high pressure laminated tops are covered with a rich dark brown finish that flows smoothly over the straight-lined contemporary design to create an exciting furniture collection.

With stunning brushed nickel hardware, this collection captures the true essence of contemporary design. The standard lead time on the Meridian is 120 days.

Please contact your Territory or Project Manager for additional information on this product line or any of our other styles and series and find out what we can do for your property.

PLACE DRAWERS SIDE-BY-SIDE OR STACKED FOR MAXIMUM STORAGE



A. 38480 HEADBOARD

Meridian Series Full-size Headboard includes bracket kit.
55 1/2"W x 2 1/2"D x 24"H



B. 50205SKD SLAT BED

80" full size slat bed with metal base, wooden veneer slats and 23" legs.
54"W x 81 1/2"D x 24 1/2"H



C. 38684-54.19 CHEST

Four drawer unstackable chest with drawer pull.
35 3/4"W x 22"D x 43"H



D. 38338-54.19 NIGHTSTAND

Two drawer nightstand with drawer pull.
23 3/4"W x 20"D x 24"H



E. 38932SKD-54.19 WRITING DESK

Writing desk with pencil drawer and drawer pull.
47 3/4"W x 23 3/4"D x 30"H



F. 38387-54.19 MOBILE PEDESTAL

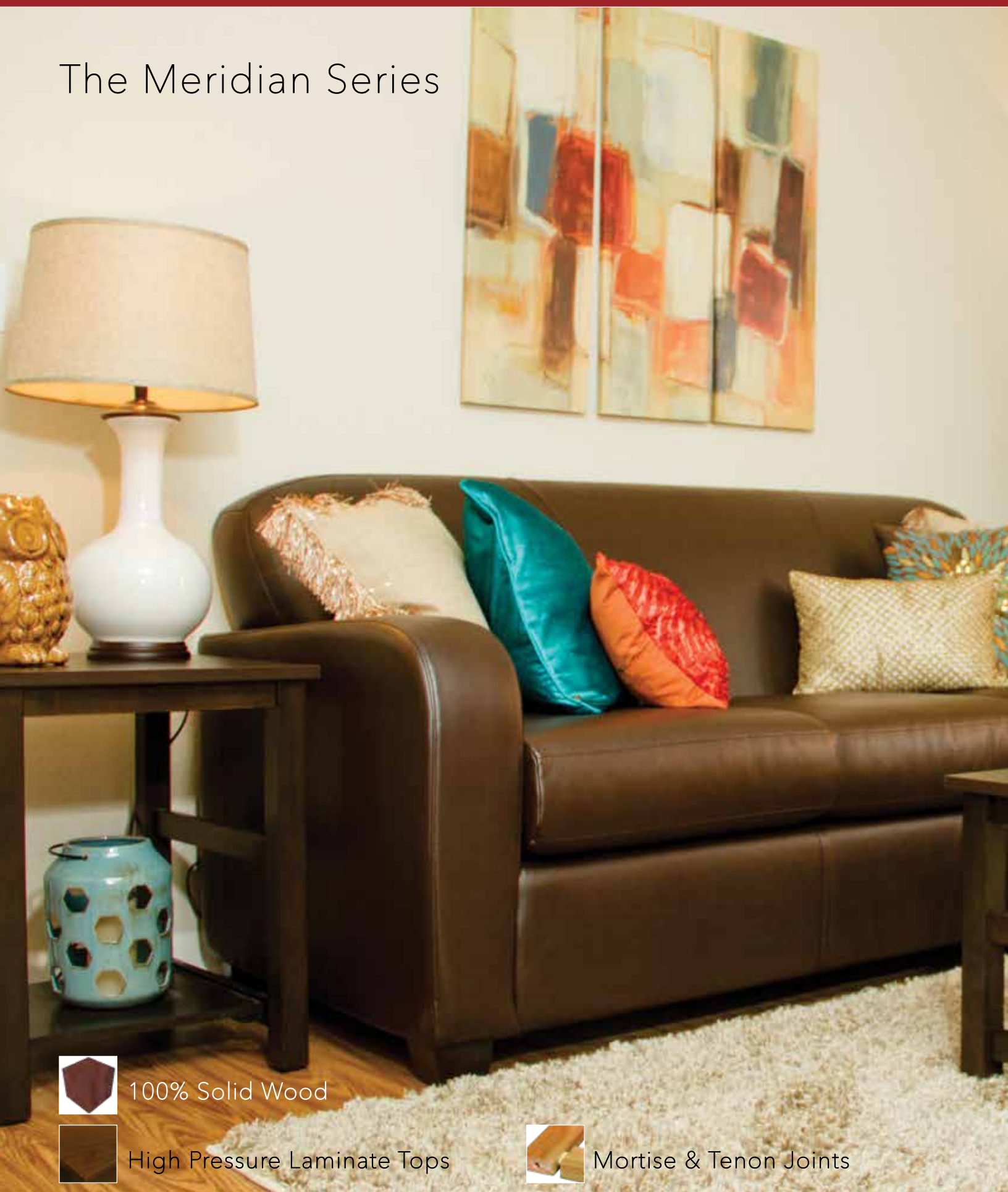
Pedestal with one small drawer and one large file drawer on casters. Bar pull located on center of drawer face.
24 3/8"W x 19 15/16"D x 19 3/8"H

G. 38196.CFL CHAIR

Metal dining chair with straight legs and wood seat.
17 3/8"W x 19 11/16"D x 34 1/4"H



The Meridian Series



100% Solid Wood



High Pressure Laminate Tops



Mortise & Tenon Joints



www.uloft.com



Photographed on location at Park
On Morton in Bloomington, IN

A. 38722-54
ENTERTAINMENT
CONSOLE



Three Shelf Entertainment Console with laminate top and straight square legs. Back panel has grommet holes and shelves have half-moon grommets to allow cords to pass.
38"W x 17 3/4"D x 33"H

B. 38570-54 END TABLE



End Table with lower shelf and solid wood frame, laminate top and square straight legs.
19 3/4"W x 22"D x 24"H

C. 38580-54 COFFEE TABLE



Coffee Table with lower shelf, solid wood frame, laminate top and square straight legs.
44"W x 23 3/4"D x 18"H

D. 660LV05 JENNINGS SOFA



This Sofa has a modern design and durable construction. It features top-stitch sewing and replaceable Velcro covers.
84"W x 37 1/2"D x 36"H



The Windsor Series



High Pressure Laminate Tops



Recycled Steel Frame



www.uloft.com



A. 47986SKD-54 DESK

Windsor Series desk with pencil drawer features Kessler Silver metal frame with Cafelle laminate top.
47"W x 23 3/4"D x 31"H



B. 47731SKD-54 ENTERTAINMENT CONSOLE

Entertainment center featuring two center divided shelves, Kessler Silver metal base and Cafelle laminate top.
42"W x 18"D x 28"H



C. 47599SKD-54 END TABLE

Windsor Series end table with one drawer (offset) with handle.
23 3/4"W x 23 3/4"D x 22 1/2"H



D. 47587SKD-54 COFFEE TABLE

Windsor Series square coffee table with one drawer (offset) with handle.
36"W x 36"D x 17 3/4"H



E. 47586SKD-54 DINING TABLE

Windsor Series dining table featuring Kessler Silver metal base with Cafelle laminate top.
42"W x 36"D x 31"H



F. 72196.CFF DINING CHAIR

Metal dining chair with wood seat and straight legs. Powder coated frame and slats.
17 3/8"W x 19 11/16"D x 34 1/4"H
Seat height: 18"H



G. 740LV05 KESSLER SOFA

The Kessler Upholstery combines the highest quality materials with tailoring like that of a fine suit.
82"W x 35 1/2"D x 34"H



H. 740LV15 KESSLER CHAIR

The Kessler Upholstery is available in a wide variety of fabrics and faux leather styles.
36"W x 35 1/2"D x 34"H



Photographed on location at The Lex - Lexington, KY

The Windsor Series



High Pressure Laminate Tops



Recycled Steel Frame



www.uloft.com



A. 47986SKD-54 DESK

Windsor Series desk with pencil drawer features Kessler Silver metal frame with Cafelle laminate top.
47"W x 23 3/4"D x 31"H



B. 47483-54 HEADBOARD

Windsor Series full-size headboard features Cafelle laminate panels with Kessler Silver trim.
54"W x 1 1/2"D x 24"H



C. 50205SKD SLAT BED

80" full size slat bed with metal base, wooden veneer slats and 23" legs.
54"W x 81 1/2"D x 24 1/2"H



D. 47596SKD-54 NIGHT STAND

Windsor Series night stand with one drawer (offset) with handle.
18"W x 18"D x 24 3/4"H



E. 47604-54 FOUR DRAWER CHEST

Windsor Series four drawer chest with the option to unstack into two pieces as underbed two drawer chests.
30"W x 20"D x 42"H



F. 72196.CFF DINING CHAIR

Metal dining chair with wood seat and straight legs. Powder coated frame and slats.
17 3/8"W x 19 11/16"D x 34 1/4"H
Seat height: 18"H



The Flat Iron Series



High Pressure Laminate Tops



Distressed Steel Frame



www.uloft.com



Photographed on location at The Flats at West Village Charlottesville, NC

A. 63743 ENTERTAINMENT CENTER

Two shelf entertainment center with distressed-style metal and laminate shelves.
47"W x 20"D x 24"H



B. 63545 COFFEE TABLE

Coffee table with distressed-style metal, mesh lower shelf and inset laminate top.
36"W x 22"D x 17 3/4"H



C. 63546 END TABLE

End table with distressed-style metal, mesh lower shelf and inset laminate top.
21"W x 21"D x 22 1/4"H



NOT PICTURED

D. 63345 NIGHT STAND

Night stand with distressed-style metal, mesh lower shelf and inset laminate top.
18"W x 18"D x 24"H



E. 63941 DESK

Desk with distressed-style metal and inset laminate top.
47"W x 22"D x 30 3/4"H





A. 64628-54 CHEST

Four drawer chest which can be stacked or place side-by-side. Solid wood sides and drawer face with Cafelle finish with laminate top
32 1/8"W x 18 1/8"D x 37 9/16"H



B. DMM629-58.B.BTM

Napa Chest with metal frame and laminate top which can be stacked or side-by-side.



Customer Testimonials



ANTHONY KULIKOWSKI, YALE UNIVERSITY PROCUREMENT SERVICES

"I would like to sum up our experience with one word 'EXCELLENT'... Not only do they perform as contracted for but they make up for our logistical short comings. In the past we have ordered late, expedited the delivery and still they bring product half way around the world before we are ready to install due to construction delays. As for the product, our furniture is a 99% Yale custom design; therefore if they can produce custom without any difficulties, what do you feel that can do with their standard product lines?"



DAVE TOMEIO, EXECUTIVE DIRECTOR OF THE STUDENT PROGRAMMING AND OPERATIONS CENTER, CLARION UNIVERSITY

"I am writing this letter to thank you for all your help in making the installation of furniture from the University Loft Company a very smooth and well organized one. I was pleased with the correspondence I received from your company and the quick response to questions or concerns I had. As you know, we had the old furniture moved out two months before the furniture from University Loft was scheduled to be delivered. Your company came through with flying colors and delivered on time and completed the installation with the time from we had discussed."



TABATHA CARNEY, PURCHASING ADMINISTRATOR, BUENA VISTA UNIVERSITY

"I wanted to pass along a compliment of the wonderful service that I received from one of your employees. She has demonstrated wonder customer service to our university and we feel very fortunate to have her as one of our main contacts within your company. We have been very pleased with most of the furniture that we have purchased through your company."



UNIVERSITY OF SOUTHERN INDIANA

"We've been using ULC for at least 10 years and we haven't had any problems with the products. ULC has always done what they tell us they will do and have stood behind their products. I would highly recommend them!"



MARION B. BRACY, FACILITY PLANNING & MANAGEMENT DIRECTOR, XAVIER UNIVERSITY OF LOUISIANA

"...We have done business with University Loft for more than two years. We are pleased to report that their project managers and salesmen have conducted all business in a highly acceptable manner. I personally have worked with University Loft on a very large project here at Xavier University and the quality of their dormitory furniture has definitely met our needs."



SUZANNE WEIN, FAMILY & GRADUATE HOUSING ADMINISTRATIVE ASSISTANT, ANDREWS UNIVERSITY

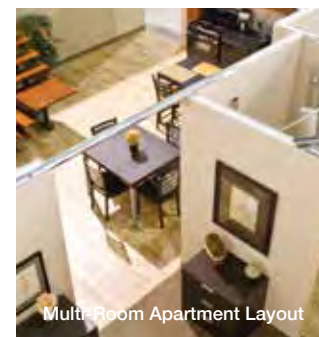
"We had a great experience with University Loft. They called to set up delivery. They followed up to make sure things were in place for the delivery. The trucks arrived early. They even followed up after the delivery to see if the delivery went well. The people were kind, friendly and customer-service oriented."



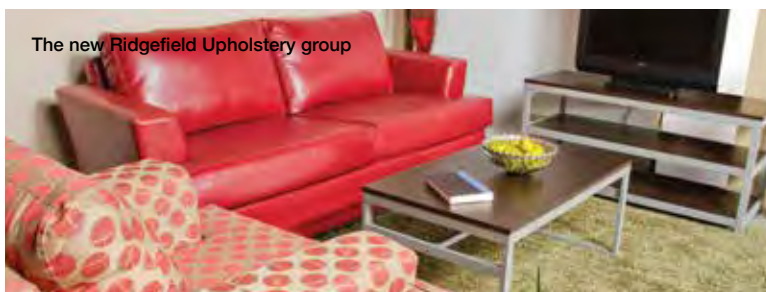
Hand-crafted upholstery from Morristown, TN



Seating Styles For Any Use



Multi-Room Apartment Layout



The new Ridgefield Upholstery group



WHY?

VISIT UNIVERSITY LOFT COMPANY TO SEE WHAT'S NEW FOR 2015, AND LEARN WHY WE'VE BEEN THE BEST FOR OVER 29 YEARS

VISIT OUR HEADQUARTERS IN THE HEARTLAND

No matter where you call home, you can always come "back home again in Indiana." That's where you'll find the University Loft Company headquarters and primary production facility – squarely in the American heartland, in Greenfield, Indiana.

Our Greenfield facility boasts more than 500,000 square feet of manufacturing and warehousing space; and our corporate offices and product showroom are right there under the same roof. Of particular interest to visitors is our 58,000 square foot showroom. It's the perfect place to view ULC's modular student furniture product lines all in one place. With more than 30 student room mock-ups (plus a student apartment setup), we make it easy for you to envision how University Loft furniture will enhance student living on or off-campus at your college or university.

Plan your visit to University Loft's headquarters in the heartland, or arrange to have our Mobile Showroom at your next campus event. Contact a representative today at 800.423.LOFT (5638).



www.uloft.com



Let our Mobile Showroom Come to You!

Can't quite get that trip to Greenfield, Indiana worked into your busy schedule? No worries. Chances are that we can bring some surprising student furniture samples to you via the University Loft mobile showroom!

While our traveling furniture showcase can't bring you all the product line samples we showcase in our Greenfield showroom, we have equipped our mobile coach with some of our most popular and requested student furnishings.

Inside the coach, you'll find dorm room and student lounge vignettes featuring Uloft's modular, solid-wood student furni-

ture. And to get feedback from students as well as residence life furniture buyers, we can often bring the mobile showroom to campus events like homecomings, student celebrations and ribbon-cutting ceremonies. We'll even bring the grill so students can fill their bellies while getting better acquainted with the many great products from the makers of cool furniture - University Loft Company!

So contact your University Loft student furniture representative to arrange to have our Mobile Showroom at your next campus event. Call us today at 800.423.LOFT (5638) to learn more!



MOBILE SHOWROOM SPECS

- Height: 13' 6"
- Length: 50' 6"
- Width: 10' closed
13' 6" open

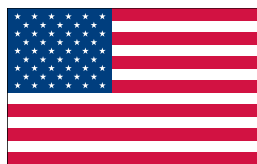
FEATURES

- Gas Grill
- Microwave
- Range
- Refrigerator/Freezer
- Awnings for rain/sun cover
- Bathroom/Shower
- TV/DVD



A LEADER IN THE FIELD

Our GSA product lines blend steel, wood and laminate for strength and style



**Made in America
by Americans
For America**

Our Company

University Loft Company is a world leader in the government contract furniture market. Since our inception in 1986 we have seen extraordinary growth in all areas of the business. We provide customers with excellent customer service and put quality first in our furniture production.

University Loft Company is always thinking of new ways to improve the functions of the furniture that we provide. An example of this is our standard tool-less bed that is adjustable, allowing the customer

to maneuver the bed to their desired height. The single beds can easily be transformed into bunk beds, lofts, and complete home offices fitting into any configuration you might need. Our customers may not be able to see the inside of every piece of furniture we build, but we build it as if they could. Taking extra steps in our commitment to quality produces a far superior product. It is our goal to excel at what we do and improve on every level our customer's experience with University Loft Company.



Mission Statement

University Loft Company is committed to contributing to the economic growth of the local Community, the United States, and our team members by providing superior furniture at extremely competitive prices, with an unmatched level of customer service and satisfaction.



WHOLE ROOM CONCEPT

At ULC, we are proud to provide furnishings to the government sector. We specialize in Whole Room Concepts, which means we can provide everything from furniture to accessories such as wall art, televisions, bedspreads, area rugs and lighting. We carry over \$5 million worth of inventory to assure quick shipment.



GSA Contract Holder

GS.27F.0022J

CAGE CODE: 0T1P0

SMALL BUSINESS

AF BPA: FA4452-11-A-0002

NAVY BPA: N00189-11-A-0093

ARMY COE APPROVED

JUST A FEW U.S. MILITARY BASES THAT UTILIZE OUR FURNITURE

ALCONBURY, UK AFB

ANDERSEN AFB - GUAM

BOLLING AFB

CAMP BUTLER

CAMP FUJI

CAMP LEJEUNE

CAMP PENDLETON

COLUMBUS AFB

DYESS AFB

FORT BRAGG

FORT CAMPBELL

FORT CARSON

FORT JACKSON

FORT LEE

GOODFELLOW AFB

GUANTANAMO BAY
NAVAL BASE

HILL AIR FORCE BASE

KADENA AIR BASE -
OKINAWA JAPAN

KUNSAN AIR BASE -
KOREA

LACKLAND AFB

MACDILL AFB

MCAS YUMA

MCB QUANTICO

MCCHORD AFB

MCGUIRE AFB

MCLB BARSTOW

MCRD PARRIS ISLAND

MOODY AFB

MOUNTAIN HOME AFB

NAB LITTLE CREEK

NAS MERIDIAN

NAS PENSACOLA

NAVAL MEDICAL CENTER
SAN DIEGO

NCBC GULFPORT

POPE AFB

SHAW AFB

TWENTY-NINE PALMS

USCG CLEAR WATER

USCG KEY WEST

USCG SECTOR MIAMI

USCG STATION LAKE
WORTH INLET

USMC AIR STATION
BEAUFORT

WHITEMAN AFB

YOKOSUKA AIR BASE

University Loft Company GSA products
have been Greenguard Certified.



The Steel Lift Bed



Recycled Steel Construction



High Pressure Laminate



Bolt-Through Hinges



Made in America



A. SECRETARY UNIT

- Two upper doors
 - Military locking handle (optional)
 - Adjustable shelves
 - 16 Gauge pull-out writing shelf
 - Three lower drawers with lockable hasp system
- 30"W x 24"D x 78"H

B. METAL LIFT BED

Metal Bed with Storage
Tool-Less EZ hook assembly metal bunk bed with underbed storage. Bed Ends with Multiple Position pin settings for versatile assembly. Underbed storage features recessed locking device, maximum storage area, solid mattress decking, gas cylinders for easy opening and closing of underbed storage lid. Inside Depth of Underbed Storage must be a minimum of 10". Angle of lid when opened should not exceed 45 degrees. Gas Springs to require minimum lift force when opening and closing.
41"W x 87"L x 34 1/2"H (69" Bunked)

C. TWO DRAWER CHEST

- Recessed hasp lock
 - Laminate top
- 34"W x 24"D x 18"H

D. WARDROBE

- Two doors with fixed shelf, coat hooks and clothes rod mounted below fixed shelf
 - Military locking handle (optional)
- 39"W x 24"D x 78"H



LOCKING UNDERBED STORAGE



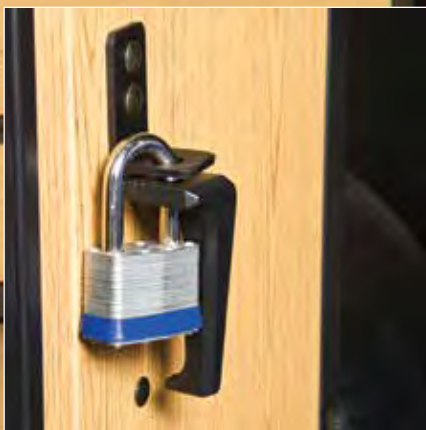
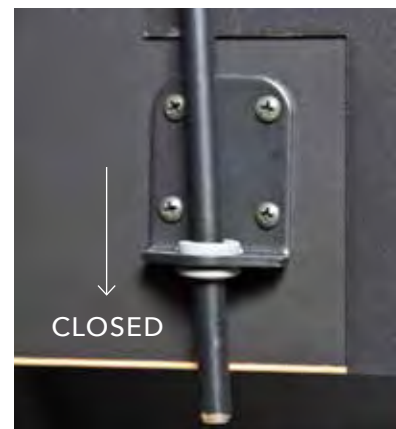
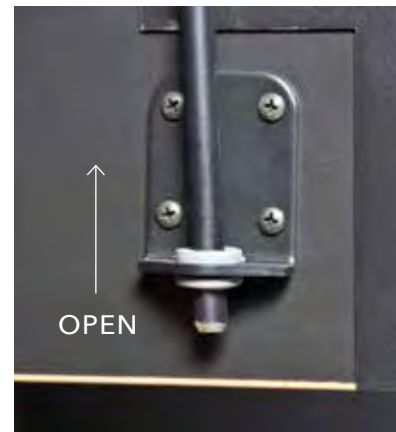
HINGED DOORS OPEN 270°



RECESSED LOCKS

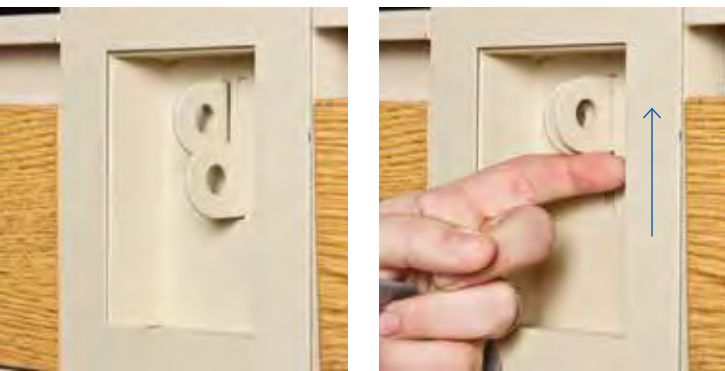
GSA Features

BEST 3-POINT ALL STEEL LOCK IN THE INDUSTRY

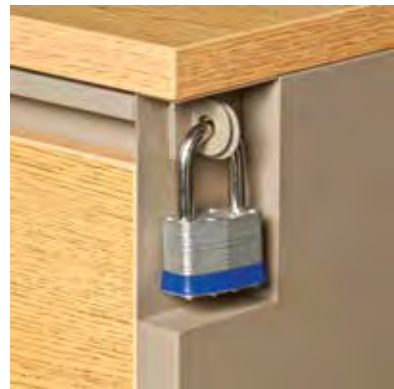




BED BOX WITH LOCKING DRAWERS



DESK CARRELS FEATURE GROMMET HOLES TO PASS CORDS THROUGH



GSA CASEGOODS HAVE RECESSED LOCKS FOR SECURE STORAGE



AVAILABLE METAL OPTIONS

**G98296 BED**

Metal Bed with Steel Bed Deck
Toolless EZ hook Bed Ends with Multiple Position pin settings for versatile assembly.
40 1/4"D x 82 1/2"L x 34 1/2"H (69" Bunked)

**G98292 BED**

Metal Bed with Spring Unit
Toolless EZ hook Bed Ends with Multiple Position pin settings for versatile assembly.
41"W x 87"L x 34 1/2"H (69" Bunked)

**G90272 METAL BED WITH DRAWERS**

Metal Bed with Storage
Toolless EZ hook assembly metal bunk bed with two drawers for storage. Bed Ends with Multiple Position pin settings for versatile assembly. Underbed storage features recessed locking device, solid mattress decking, and two faces
40 1/4"W x 82 1/2"L x 34 1/2"H (69" Bunked)

**G85289 METAL LIFT BED**

Metal Bed with Storage
Toolless EZ hook assembly metal bunk bed with underbed storage. Bed Ends with Multiple Position pin settings for versatile assembly. Underbed storage features recessed locking device, maximum storage area, solid mattress decking, gas cylinders for easy opening and closing of underbed storage lid. Inside Depth of Underbed Storage must be a minimum of 10". Angle of lid when opened should not exceed 45 degrees. Gas Springs to require minimum lift force when opening and closing.
41"W x 87"L x 34 1/2"H (69" Bunked)

**G85460 TUBULAR METAL BED END**

GSA Tubular Metal Bed End Set with spring unit. Includes Bunking Brackets (Tubes). Wedge-lock securement.
40 1/4"W x 1 1/2"D x 29 3/4"H



A. G85393.1 NIGHTSTAND

G97393-18
20"W x 20"D x 25"H



B. G97681-55 TWO DRAWER

G97624-55
36"W x 24"D x 18"H



C. G85682.22 THREE DRAWER

30"W x 22"D x 30"H

A.

B.

C.

D. G85658 FIVE DRAWER

30"W x 24"D x 43"H



E. G85957 PEDESTAL DESK

42"W x 24"D x 30"H
G85987.45 45" Version
45"W x 24"D x 30"H

F. G85394.3 DESK CARREL

42"W x 10"D x 26"H
G85397.24 45" Version
45"W x 10"D x 26"H

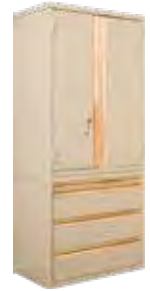
D.

E.

F.

G. G85394.34 2 SHELF
CARREL

42"W x 10"D x 34"H
G85397.34 45" Version
45"W x 10"D x 34"H



H. G85741 WARDROBE

30"W x 18"D x 78"H
G85740 36"W x 24"D x 78"H

I. G85745 WARDROBE

30"W x 24"D x 78"H

G.

H.

I.

J. G85751 WARDROBE

42"W x 24"D x 78"H



K. G98758 GUN LOCKER

36"W x 24"D x 72 3/8"H

L. G94392 FOOT LOCKER

32"W x 16"D x 12"H

J.

K.

L.

M. G98763-19
ENTERTAINMENT CENTER

28"W x 20"D x 30"H



M.

METAL FINISHING OPTIONS



BLACK



DESERT SAND



MOUNTAIN
GREY



FOREST GREEN



JUTE

HARDWOOD/LAMINATE OPTIONS



NATURAL



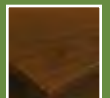
TUSCAN
WALNUT



WILD CHERRY

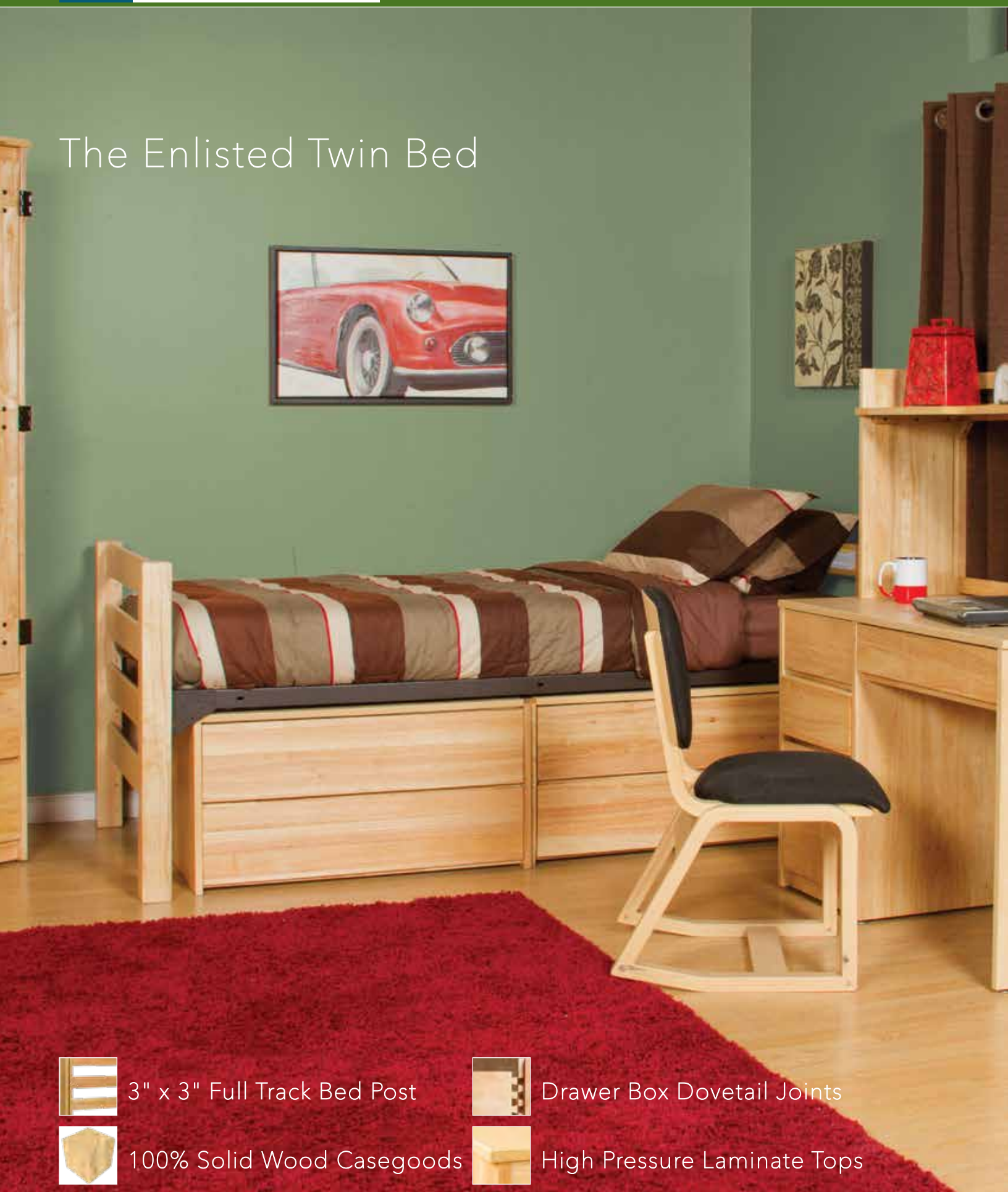


EMPIRE
MAHOGANY

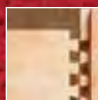


CAFELLE

The Enlisted Twin Bed



3" x 3" Full Track Bed Post



Drawer Box Dovetail Joints



100% Solid Wood Casegoods



High Pressure Laminate Tops

ENLISTED TWIN BED

A. TWIN BED ENDS w/ METAL SPRING UNIT

- "Tool-less", ladder style bed ends
 - 3" x 3" solid wood post
 - Adjustable settings
 - Includes bunking pins
- 41 1/4"W x 86 1/2"D x 34 1/2"H



B. TWO DRAWER CHEST

- Stackable
 - Laminate top
- 36 1/4"W x 21 13/16"D x 18 13/16"H



C. PEDESTAL DESK

- Pencil drawer with removable divider
 - Two left side drawers
 - Deep file drawer
 - Laminate top
- 42"W x 22"D x 30"H



D. DESK CARREL

- 19" Shelf clearance
- 40"W x 12 11/16"D x 23 15/16"H



E. UPHOLSTERED TWO POSITION CHAIR

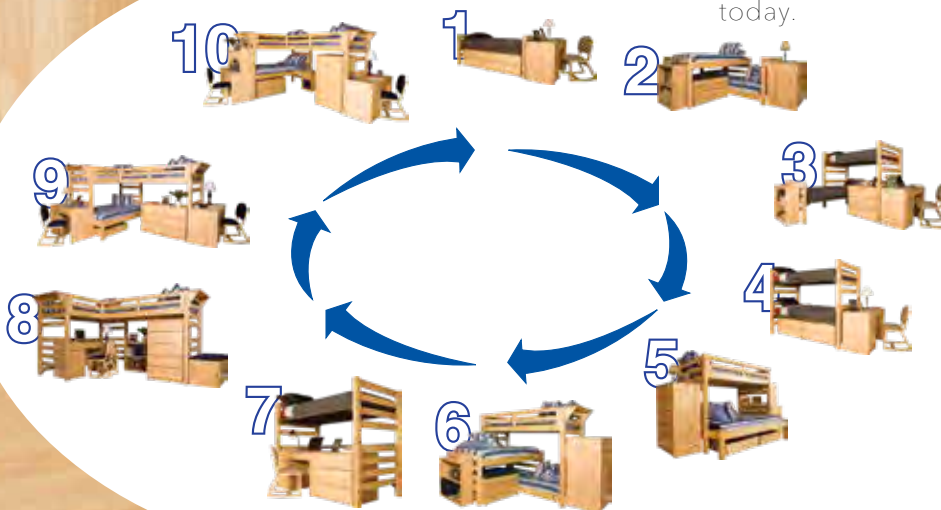
Ply2 based chairs are designed to lean. Available with wood seat and back or upholstered. Ask about fabric options.

19 5/16"W x 22 11/16"D x 33"H



ONE COMMON SIZE

Ease of assembly provides for multiple configurations. Some additional parts are required for certain bed setups. For help with bed conversions, contact your representative today.



ENLISTED OPEN LOFT BED



ENLISTED BUNK BED

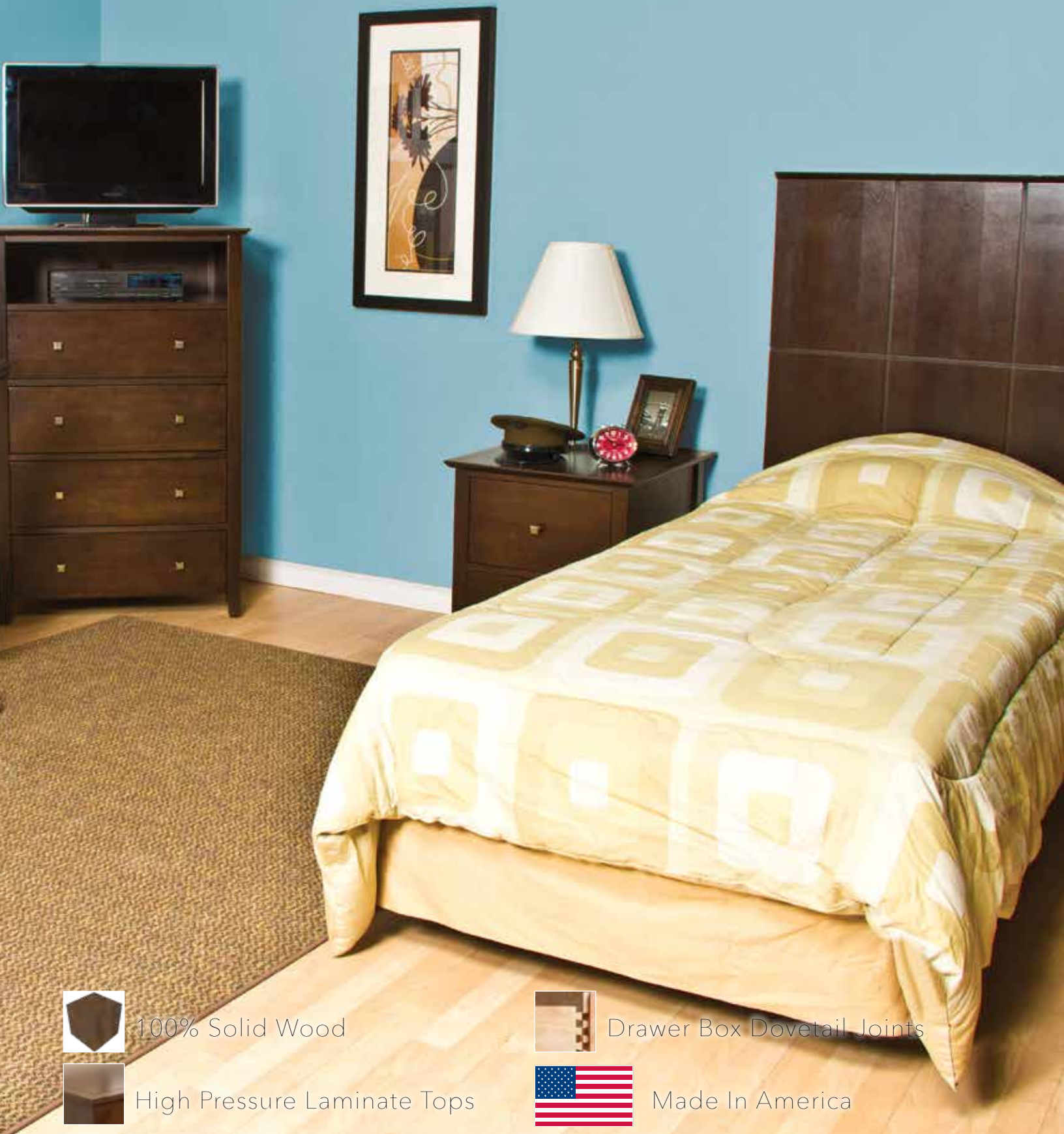


ENLISTED JUNIOR LOFT



ENLISTED SENIOR CREW

The Valor Series



100% Solid Wood



Drawer Box Dovetail Joints



High Pressure Laminate Tops



Made In America

A. G41329 MULTIPURPOSE WALLBOARD

- Wall mount dry erase tack board with shelf
 - Solid wood with light (optional)
 - Grommet hole for light cord
- 42"W x 30"H x 14"D



B. G32942 WRITING DESK

- Pencil drawer
 - Square brushed nickel knobs (optional)
 - Solid wood, laminate top
- 42"W x 24"D x 30"H



C. G41648 FOUR DRAWER CHEST

- Square brushed nickel knobs (optional)
 - Solid wood, laminate top
- 32"W x 24"D x 48"H



D. G41338 NIGHTSTAND

- Square brushed nickel knobs (optional)
 - Solid wood, laminate top
- 23 3/4"W x 20"D x 24"H



E. G41497 BED w/ RAISED PANEL HEADBOARD

- Available in twin or full size
- Wall mounted headboard
- Hollywood bed frame

Twin Headboard:
39"W x 39 3/4"H x 2"D
Full Headboard:
55"W x 39 3/4"H x 2"D



The Lift Bed



100% Solid Wood



High Pressure Laminate Tops



Drawer Box Dovetail Joints



Made In America



A. G10282 LIFT BED w/ TWO DRAWERS

- Underbed and headboard storage
- Document storage (optional) and underbed ventilation system
- Solid wood

Overall:

95 11/16"W x 42"D x 51 5/8"H

Sleep Surface: 39 1/4"W x 81"D

Storage Headboard:

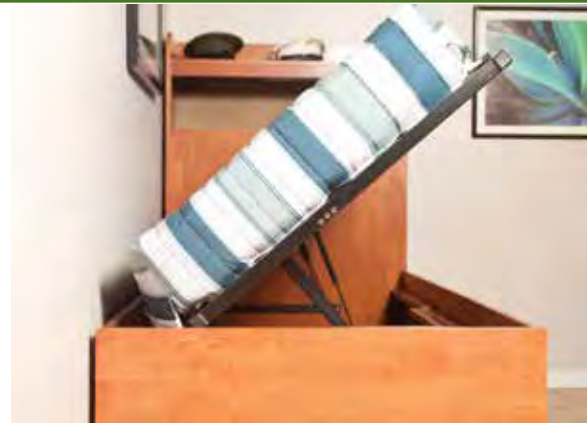
13 11/16"W x 42"D x 51 5/8"H

B. G32956 WRITING DESK

- Hasp cam lock (optional)
 - Solid wood, laminate top
- 42"W x 22"D x 30"H

C. G32646 TWO DRAWER DRESSER

- Solid wood, laminate top
- 36"W x 24"D x 30"H



GAS ASSISTED LIFT



DRAWER LOCK



HEAVY DUTY DRAWER GLIDES



LOCKING UNDERBED STORAGE

AVAILABLE WOOD OPTIONS



A.



B.



C.

A. G10284 784-B LIFT BED
95 11/16"W x 42"D x 51 5/8"H

B. G10282 782-B LIFT BED
95 11/16"W x 42"D x 51 5/8"H

C. 12259 RAISED PANEL FULL BED
60"W x 86 11/16"D x 50"H



D.



E.



F.

D. 3000259 MISSION FULL BED
60"W x 83 1/2"D x 47 7/16"H
3000258 MISSION QUEEN BED
65 3/4"W x 86 11/16"D x 47 7/16"H

E. G32208 TWIN BED
41 1/4"W x 86 1/2"D x 34 1/2"H

F. G32207 WEDGE LOCK BED
38 3/4"W x 86 1/2"D x 34 1/2"H



G.



H.



I.

G. G32373 NIGHT STAND
19 1/4"W x 14 1/4"D x 24"H

H. G32387 TWO DRAWER NIGHT STAND
16 3/4"W x 22"D x 23 15/16"H
G32388 THREE DRAWER NIGHT STAND
16 3/4"W x 22"D x 29 15/16"H



J.



K.



L.

I. G10624-30 TWO DRAWER
36 1/4"W x 21 13/16"D x 18 13/16"H

J. G32634 THREE DRAWER
36 9/16"W x 22"D x 30"H
G32632 THREE DRAWER
30"W x 22"D x 30"H

K. G32635 FOUR DRAWER
32 1/8"W x 18 1/8"D x 37"H
G32628 FOUR DRAWER UNSTACKABLE
32 1/8"W x 18 1/8"D x 37 11/16"H

L. G32638 FIVE DRAWER
30"W x 22"D x 48 1/8"H

HARDWOOD OR LAMINATE OPTIONS



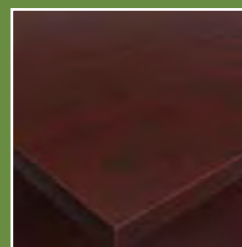
NATURAL



TUSCAN WALNUT



WILD CHERRY



EMPIRE MAHOGANY

M. G32642 SIX DRAWER
50 7/16"W x 17 3/8"D x 30"H

N. DESK CARREL
40"W x 12 11/16"D x 23 15/16"H

O. G32302 TWO SHELF
CARREL
40"W x 11"D x 30 1/16"H



M.



N.



O.

P. G32956 WRITING DESK
42"W x 24"D x 30"H

G32942 WRITING DESK
36"W x 24"D x 30"H

Q. G32957 PEDESTAL DESK 42"
42"W x 22"D x 30"H

G32997 PEDESTAL DESK 45"
45"W x 24"D x 30"H

G32937 PEDESTAL DESK 48"
48"W x 24"D x 30"H

R. G32783 DROP FRONT DESK
32"W x 24"D x 51"H



P.



Q.



R.

S. G32782 SECRETARY UNIT
36 3/8"W x 25"D x 64"H

T. G32755 WARDROBE
36"W x 24"D x 72"H

U. G32796 WARDROBE
36 11/16"W x 22 1/16"D x 78 15/16"H



S.



T.



U.

V. G32777 WARDROBE
26"W x 24"D x 84"H

W. G32707 WARDROBE
30 3/16"W x 24"D x 79 7/8"H

X. G32348 MICROFRIDGE
CABINET
24"W x 24"D x 86"H



V.



W.



X.

HANDLE OPTIONS



The Modern Upholstery Collection



Quality Craftsmanship



Replaceable Velcro™ Coverings



VELCRO® UPHOLSTERY TECHNOLOGY

A. 180LV05 MODERN SOFA

Utilizes Velcro® Technology for easy cleaning, replacement and repair
79 1/4"W x 36"D x 32"H



B. 180LV15 MODERN CHAIR

Utilizes Velcro® Technology for easy cleaning, replacement and repair
34 1/2"W x 36"D x 32"H



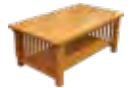
C. G32531 MISSION STYLE END TABLE

- Solid wood, laminate top
- 24"W x 18"D x 21 1/2"H



D. G32515 MISSION STYLE COFFEE TABLE

- Solid wood, laminate top
- 42"W x 24"D x 17"H



E. G32307 BOOKCASE

- Two shelves
- Solid wood, laminate top
- 30"W x 12"D x 30"H



F. G32957 PEDESTAL DESK

- Pencil Drawer with removable divider
- Grommet hole behind the pencil drawer
- Two left side drawers and a file drawer
- Solid wood, laminate top
- 42"W x 22"D x 30"H



G. G32PLY2 UPHOLSTERED TWO POSITION CHAIR

- Waterfall-style seat
- 19 5/16"W x 22 11/16"D x 33"H



"WHOLE ROOM SOLUTIONS" ITEMS

AREA RUG

Various colors and sizes available

ARTWORK

Various prints and sizes available

DESK LAMP

Various styles and colors available

The Patriot Upholstery Collection



Quality Craftsmanship



Replaceable Velcro™ Coverings



PATRIOT UPHOLSTERY 862LV

The Patriot Upholstery collection is fashioned in a classic style. This collection features solid wood bun feet, rolled arms and tight back cushions. The cushion coverings are easily replaceable due to Velcro® Technology.

A. 862LV05 SOFA
84"W x 35 3/4"D x 33 1/2"H

B. 862LV10 LOVESEAT (not pictured)
62"W x 35 3/4"D x 33 1/2"H

C. 862LV15 CHAIR
38"W x 35 3/4"D x 33 1/2"H

D. G32530 SLED BASE END TABLE
18"W x 26"D x 20"H

E. G32326 FIVE SHELF BOOKCASE
30 3/8"W x 12 3/8"D x 69 5/8"H

"WHOLE ROOM SOLUTIONS" ITEMS

AREA RUG
Various colors and sizes available

ARTWORK
Various prints and sizes available

DESK LAMP
Various styles and colors available

AVAILABLE GSA SEATING OPTIONS



G80162 TANGO OFFICE CHAIR

High Performance Office Task Chair. Ask about fabric options.

- Nylon Base
- Multi-Function Seat Plate
20 3/4"W x 17 1/4"D x 36 3/4" - 45 3/4"H

G32PLY1-UPH
STACKABLE PLY CHAIR

Four leg upholstered, stackable chair. Available with wood seat and back or upholstered. Ask about fabric options.

19 5/16"W x 23 11/16"D x 33"H

G32PLY2 TWO POSITION
CHAIR

Ply2 based chairs are designed to lean. Available with wood seat and back or upholstered. Ask about fabric options.

19 5/16"W x 22 11/16"D x 33"H





G50111 METAL SLED BASE CHAIR W/ ARMS

- Thick Padded Seat and Back
- Designer Plastic Shell Back
- Upholstered Seat and Back - Ask about fabric options.
- Black Finished Frame and Sled Base

23"W x 25 1/2"D x 32 1/4"H
Seat Height: 19"



G50114 METAL TWO POSITION CHAIR

Metal two position chair styled after the classic wood 10PLY2 chair. Features metal tubing with upholstered seat and back. Ask about fabric options.

19 5/16"W x 22 11/16"D x 33"H
Seat Height: 16"



G50115 METAL LEGGED CHAIR w/ ARMS

- Thick Padded Seat and Back
 - Upholstered Seat and Back - Ask about fabric options.
 - Black Finished Frame and Base
- 23"W x 25 1/2"D x 32 1/4"H
Seat Height: 19"



G50121 METAL LEGGED CHAIR w/o ARMS

- Thick Padded Seat and Back
- U-Shaped brace bar
- Upholstered Seat and Back - Ask about fabric options.

23"W x 25 1/2"D x 32 1/4"H
Seat Height: 19"

1984



James Jannetides comes up with idea for Triple Lindy during his time at SIU.



ULC's First Delivery Truck



First Sales Rep - Mark Lawburgh



First Showroom



First Office

1990



ULC introduces first mobile showroom to display furniture across the country

1992



ULC lands first major account - the University of Portland

1996



ULC secures the U.S. Military Camp Butler account



ULC introduces the 2 Position Chair and 100% solid oak casegoods

ULC ships first export job to University of Guam

1999



ULC acquires a 270,000 SQ/FT factory and sets up shop



Indiana Business Journal lists ULC as one of Indiana's 40 Under Forty - 40 businesses ran by someone under the age of 40

+1100 Accounts

1995

ULC expands into a warehouse in Indianapolis, IN

+400 Accounts

'84 '86 '90 '91 '92 '93 '94 '95 '96 '97 '98 '99 '00



Selling furniture out of moving trucks



James rents first 400 lofts at SIU

1986

James sells ULC Division called *The Loft Rental Company* to local SIU students (still using same lofts today)

1991

+5 Accounts
1993

10 YEARS LATER



James and his wife Deana at ACUHO-I Tradeshow



Housing Director - Ed Jones of SIU

1994

+70 Accounts



Friends of the World organization is created and ULC goes "Green"

GSA Contract Holder
ULC becomes a GSA Contract Holder



Nick and Tom Jannetides setting up the Washington St. office downtown Indianapolis



ULC's second Mobile Showroom



+800 Accounts

1997



ULC builds upholstery factory in Tennessee

900 universities now using ULC furniture in their institutions.

+900 Accounts

1998



ULC's Environmentally Friendly Timber tests stronger than Northern Red Oak



ULC receives the Blue Chip Enterprise Award

2000

2001



ULC donates \$100,000 to Southern Illinois University to establish a Chair for Business Ethics



ULC is named one of Indy's 25 Fastest Growing Companies

2005



ULC wins Sam's Wholesale Account



ULC is ranked among the top 300 wood working companies in the US by FDM Magazine



The New ULC Mobile Showroom

2007



ULC wins Lowe's Account



Spring '07 - ULC breaks ground at the site of their new facility in Greenfield, IN

Fall '07 - Construction of ULC's new home is complete

2012



ULC is recognized as one of Indianapolis's Largest Manufacturers by Indianapolis Business Journal

2015



ULC delivered 1,070 individual desks, 225 double desks, and 1,625 upholstered Chairs to Cathedral High School in Indianapolis, IN.

2010



ULC became Greenguard Certified



First Annual Arbor Day Celebration - ULC planted and donated over 800 trees and seedlings

'01 '02 '04 '05 '06 '07 '09 '10 '11 '12 '13 '14 '15



ULC receives patent #6,353,945 issued on March 12, 2002 for a multi-positional bed



James receives the Ernst & Young Entrepreneur of the Year Award for Business Leadership

2002



ULC is ranked among the top 300 wood working companies in the US by FDM Magazine

ULC receives the following patents:
#6,983,494 - Multiple Bed Unit and Sub-Assembly
#7,089,609 - Multiple Bed Unit and Sub-Assembly
#D507,708 - Bunk Bed with Perpendicular Bunks
#D531,840 - Guard Rail for Bed
#D532,213 - Loft Bed

2006



ULC sponsors the Greg Ray Racing team in the Indianapolis 500 and additional races

2004



ULC acquires the U.S. Military Camp Lejeune & Camp Pendleton Accounts

2009



2011



Our metal products are approved by the Army Core of Engineers

2013



Installation of metal products are ready for Military installations

2014

On the Road to Style

In the classic poem, 'The Road Not Taken', Robert Frost writes:

*Two roads diverged in a wood, and I –
I took the one less traveled by,
And that has made all the difference.*

In life there are, indeed, forks in the road. Since 1994, University Loft Company has chosen the road less traveled – the eco-friendly "green" path – because we believe it makes all the difference to our planet and our customers.

Our Green Initiatives drive us to use Environmentally Farmed Timber – 100% certified hardwood from sustainable and renewable forests, along with bio-based foam cushions and recycled fabrics. Best of all, we do it with that unmistakable University Loft Style!



To learn more about our Green Plan, explore this catalog or visit uloft.com.



www.uloft.com



Let's take a closer look at how our environmental commitment impacts our fabric and soft material choices:

SUSTAINABLE OR ORGANIC? WITH ULC FURNITURE AND FABRICS YOU GET BOTH

At University Loft Company we pay particular attention to the fibers we use and how they are produced and woven into fabric. Typically, the term "sustainable" deals more with the production and manufacturing ends of the supply chain; while "organic" relates to the planting, growing and harvesting of the fibers. We differentiate between the two by carrying the Planet Earth™ brand for all of our sustainable products and the Eco-Luxe™ brand for our organic products.

While natural fibers such as cotton, linen, hemp and bamboo (among others) are biodegradable, they are not considered sustainable if they contain unacceptable levels of harmful chemicals in their current form that could harm the environment in their next stage of life. In other words, to be biodegradable or recycled is not enough because most of the environmental impact comes from the dyeing and finishing of the fabric.

For fiber to be considered "organic", it must be raised and harvested in accordance with the strict standards of one

or more of many certification companies or organizations. These entities maintain standards that ensure there will be little or no impact to the soil in which the plants are grown, the surrounding environment in which they are raised, and to the workers who harvest and bring the fibers to the next level of the supply chain.

There are often guidelines that producers must follow to make certain that certified organic fibers remain separate throughout the production process, from spinning and weaving of yarn, to the dyeing and finishing of the fabric. Just as a product should only be called "organic" if it has been certified, it is also important that the percentage of organic fiber be disclosed. University Loft Company's premium Eco-Luxe™ brand will carry fabrics that contain 100% certified fibers.

GOT STANDARDS? WE DO!

The environmental impact caused by the dyeing and finishing of textiles varies throughout the world. To address this issue, the Global Organic Textile Standard (GOTS) has emerged as the world's leading processing standard for textiles made from organic fibers. GOTS defines high-level environmental criteria along the entire organic textiles supply chain and requires compliance with social criteria as well. Only textile products that contain at least 70% organic fibers can become GOTS certified. Without such a standard, it might be true that a fabric is woven with organic or biodegradable fiber, but its impact on the environment cannot be complete without

evaluating its processing after weaving.

At ULC, all of our natural fiber fabrics are dyed to the GOT Standards. We use non-Chlorine bleach and biodegradable scouring agents to prepare our fabrics for dyeing and finishing. We do not use mercerization or other highly caustic processes during the processing of our fabrics. The dyes we use are all low-impact without heavy metal content. What's more, they are processed with little or no salt and a minimum of auxiliary chemicals that require the lowest possible filtration of the water. And from an energy efficiency standpoint, our dyers utilize on-site heat reclamation and water filtration using modern, efficient equipment.

At University Loft Company, we continually seek innovative eco-friendly technology throughout the supply chain. For example, the Protura™ yarns we feature in certain fabrics allow more dye to permanently penetrate the fiber. Thus, less dye is required and lesser amounts of energy and chemicals are necessary to keep the dye in the fabric and treat the water.

Sustainable furniture production. Organic fabrics. With University Loft Company you get both. And it makes all the difference to our planet.

Planet Earth™ and Eco-Luxe™ are registered trademarks of Treo Textiles International LLC. Protura™ is a registered trademark of Clovertex LLC.



The Jennings Collection

LOFT is dedicated to providing our customers with exactly what they envisioned for their living spaces. If we don't have what you're looking for in our extensive product lines, we can customize a project to suit your specific needs. Since we are a manufacturer of furniture and not just a warehouse, we are able to provide you with furniture that is tailored to meet your needs, even if we don't have it in stock. Contact us today about your vision - we'll work together to make it happen.

Visor-Alderson Construction wanted a brown/black look in their laminate and wood that would provide a very dark and rich appearance. They chose the cafelle color and paired it with a brushed nickel metal to give a good pop of color. They chose the vinyl Jennings sofa and chair combo to match the laminates.



Quality Craftsmanship



Replaceable Velcro™ Coverings

Photographed on location at the Village at
Muller Park Apartments - Bloomington, IN



www.uloft.com



JENNINGS 660LV

Apartment living doesn't have to mean dull furnishings. At the Village at Muller Park Apartments in Bloomington, IN, students are treated to high-end style, thanks to Loft's Jennings and Brushed Nickel furnishings. LOFT's photographer was given the opportunity to visit the apartments and see for himself how tenants liked their LOFT furniture. He was graced with many compliments and thanks from students who were impressed with the look and quality of their furniture. Exceeding customer expectations. That's the LOFT way.

The Jennings Collection certainly stands out from the crowd with its modern design, incredible comfort, and durable construction. The chair, sofa, and loveseat all feature detailed top-stitch sewing. The covers are attached using Velcro® Technology making them easy to clean, repair, and replace when needed.

A. 660LV15.XMTG018 CHAIR

Jennings Chair with Mesa Blackberry fabric.
36"W x 37 1/2"D x 36"H

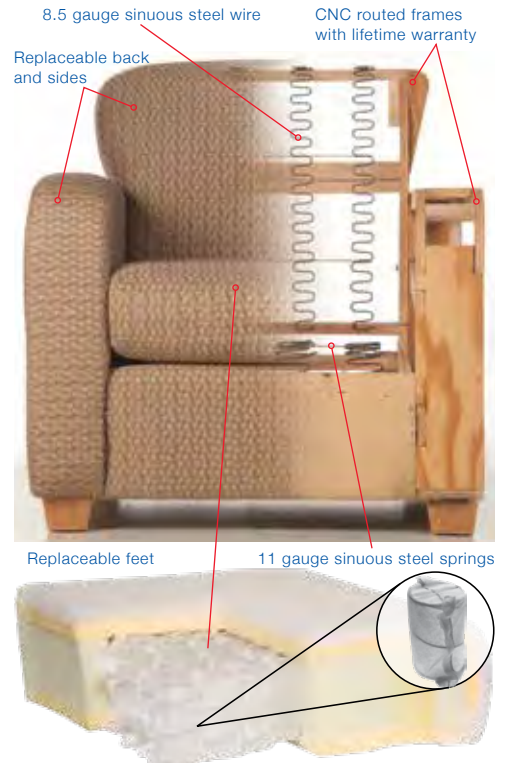
B. 660LV05.XMTG018 SOFA

Jennings Sofa with Mesa Blackberry fabric.
84"W x 37 1/2"D x 36"H

C. 660LV10.XMTG018 LOVESEAT

(not pictured)

Jennings Chair with Mesa Blackberry fabric.
59 1/2"W x 37 1/2"D x 36"H



FOAM & POCKETED SPRING CUSHIONS

The seating is a combination of high-density polyurethane foam and pocketed steel coil inner-springs. Each steel coil is encased in its own non-woven fabric pocket, which allows each spring to work independently.

VELCRO® UPHOLSTERY TECHNOLOGY

The Ridgefield Series



Quality Craftsmanship



Replaceable Velcro™ Coverings



www.uloft.com



RIDGEFIELD 496LV

The Ridgefield Series is the newest upholstery collection from University Loft. This stylish addition to our lineup combines years of hand crafted construction methods with a modern look and feel. Contact a representative today to find out more about the Ridgefield Series.

A. 496LV05 SOFA

85"W x 38"D x 37"H

B. 496LV10 LOVESEAT (not pictured)

63"W x 38"D x 37"H

C. 496LV15 CHAIR

39"W x 38"D x 37"H



The Interlude II Sectional



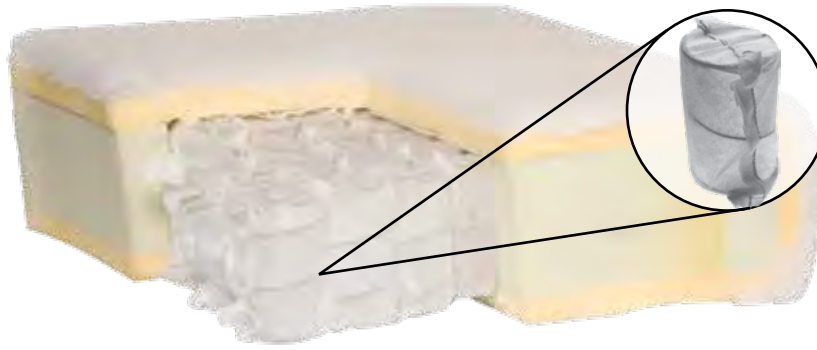
Quality Craftsmanship



Replaceable Velcro™ Coverings



www.uloft.com



FOAM & POCKETED SPRING CUSHIONS

The seating is a combination of high-density polyurethane foam and pocketed steel coil inner-springs. Each steel coil is encased in its own non-woven fabric pocket, which allows each spring to work independently.

851TV INTERLUDE II SECTIONAL

The Interlude Collection is as inviting as it is stylish. With its leather-like vinyl, multi-piece design, and urban style, the Interlude Collection surely makes a statement. These upholstered pieces may be configured to fit any seating need in a common area. From armless and right or left one arm pieces as well as a corner piece - your combinations of pieces allows many arrangements to be set up. The styling is a sure way to improve the look of your common areas. Utilizing Velcro® technology, the covers are easy to clean, repair, or replace.

A. 851TV39 One Arm Chaise

60 1/4"W x 33 1/4"D x 28"H



B. 851TV70 Armless Chair

20 1/2"W x 33 1/4"D x 28"H



C. 851TV75 Armless Corner

33 1/4"W x 33 1/4"D x 28"H



D. 38570-54 END TABLE

End Table with solid wood, square legs high-pressure laminate top. 19 3/4"W x 22"D x 24"H



E. 38580-54 COFFEE TABLE

Coffee Table with high-pressure laminate top and shelf with solid wood square legs. 44"W x 23 3/4"D x 18"H

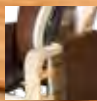
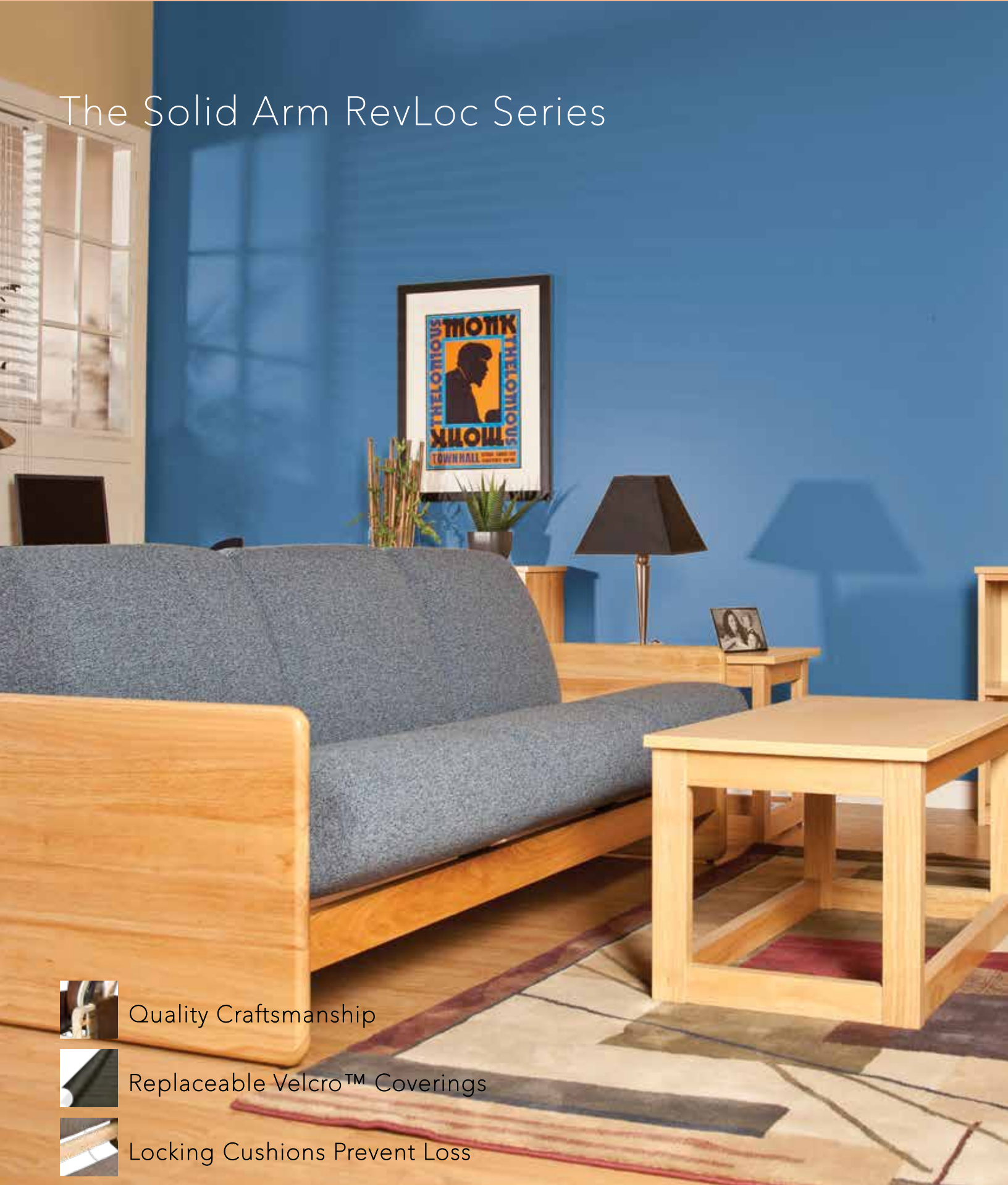


UNIVERSITY LOFT UPHOLSTERY CRAFTSMANSHIP

- Seats and backs contain solid hardwood spring rails
- All removable pillows are zippered using a hidden pocket for easy adjustment access or replacement
- All Dacron backs are encased and "compartmentalized" in bags to prevent fiber migration and shifting of the padding
- Sides and backs are reinforced and padded to provide a 360° elegant look
- Machine positioned spring clips provide comfort and stability
- Heavy 8.5 gauge steel springs in seat provide strength and flexibility
- 11 gauge steel springs in back ensures lasting comfort
- Fiber-wrapped 2.0" high density CAL117 compliant (fire retardant) cushion foam
- Fiber-blown pillows provide comfort and consistent shape
- Precision tailoring includes more stitches per inch to meet contract standards, lock-stitched seams to prevent raveling, and unique sewing techniques that eliminates the lumps and bumps that result when using staples to tailor furniture.
- Velcro® Technology allows for easy adjustments and affordable fabric replacements

VELCRO® UPHOLSTERY TECHNOLOGY

The Solid Arm RevLoc Series



Quality Craftsmanship



Replaceable Velcro™ Coverings



Locking Cushions Prevent Loss



www.uloft.com



REPLACEABLE CUSHION COVERS

The RevLoc cushions slide into tracks, which are built into the frame and are easily replaceable. Because cushions sometimes "walk away" from lounge areas, these lock in place with a cable (see picture below) and key that the maintenance staff will control. The cushion covers are attached with Velcro® for easy replacement.



VELCRO® UPHOLSTERY TECHNOLOGY

REVLOC SOLID ARM 220LV

The Revloc Solid Arm collection is designed to withstand heavy use. This collection features solid wood arms with an upholstered tight seat cushion. The cushions are easily replaceable due to Velcro® Technology and fasten directly into the frame to prevent slipping.

A. 220LV05 SOFA

75 3/4"W x 33"D x 32"H

B. 220LV10 LOVESEAT (not pictured)

51 1/2"W x 33"D x 32"H

C. 220LV15 CHAIR

27 1/4"W x 33"D x 32"H



WASH OR REPLACE COVERINGS QUICKLY



CABLE KEEPS CUSHIONS LOCKED TOGETHER

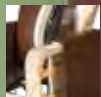
The Open Arm RevLoc Series



VELCRO® UPHOLSTERY TECHNOLOGY

www.uloft.com





Quality Craftsmanship



Replaceable Velcro™ Coverings



Locking Cushions Prevent Loss

REVLOC OPEN ENDED 240LV

The Revloc Open Arm collection is designed to withstand heavy use. This collection features open wood arms with an upholstered tight seat cushion. The cushions are easily replaceable due to Velcro® Technology and fasten directly into the frame to prevent slipping.

A. 240LV05 SOFA

75 3/4"W x 33"D x 32"H

B. 240LV10 LOVESEAT (not pictured)

51 1/2"W x 33"D x 32"H

C. 240LV15 CHAIR

27 1/4"W x 33"D x 32"H



CUSHIONS LOCK TOGETHER TO PREVENT LOSS OR MISS-USE



REPLACEABLE CUSHION COVERS

The RevLoc cushions slide into tracks, which are built into the frame and are easily replaceable. Because cushions sometimes "walk away" from lounge areas, these lock into place with a cable (see picture above) and key that the maintenance staff will control. The cushion covers are attached with Velcro® for easy replacement.



RIDGEFIELD 496LV

The Ridgefield Series is the newest upholstery collection from University Loft. This stylish addition to our lineup combines years of hand crafted construction methods with a modern look and feel. Contact a representative today to find out more about the Ridgefield Series.

A. 496LV05 SOFA

85"W x 38"D x 37"H

B. 496LV10 LOVESEAT (not pictured)

63"W x 38"D x 37"H

C. 496LV15 CHAIR

39"W x 38"D x 37"H



JENNINGS 660LV

The Jennings Collection certainly stands out from the crowd with its modern design, incredible comfort, and durable construction. The chair, sofa, and loveseat all feature detailed top-stitch sewing. The covers are attached using Velcro® Technology making them easy to clean, repair, and replace when needed.

A. 660LV05 SOFA

Jennings Sofa with Mesa Blackberry fabric.
84"W x 37 1/2"D x 36"H

B. 660LV10 LOVESEAT (not pictured)

Jennings Chair with Mesa Blackberry fabric.
59 1/2"W x 37 1/2"D x 36"H

C. 660LV15 CHAIR

Jennings Chair with Mesa Blackberry fabric.
36"W x 37 1/2"D x 36"H





REVLOC SOLID ARM 220LV

The Revloc Solid Arm collection is designed to withstand heavy use. This collection features solid wood arms with an upholstered tight seat cushion. The cushions are easily replaceable due to Velcro® Technology and fasten directly into the frame to prevent slipping.

A. 220LV05 SOFA

75 3/4"W x 33"D x 32"H

B. 220LV10 LOVESEAT (not pictured)

51 1/2"W x 33"D x 32"H

C. 220LV15 CHAIR

27 1/4"W x 33"D x 32"H



REVLOC OPEN ENDED 240LV

The Revloc Open Arm collection is designed to withstand heavy use. This collection features open wood arms with an upholstered tight seat cushion. The cushions are easily replaceable due to Velcro® Technology and fasten directly into the frame to prevent slipping.

A. 240LV05 SOFA

75 3/4"W x 33"D x 32"H

B. 240LV10 LOVESEAT (not pictured)

51 1/2"W x 33"D x 32"H

C. 240LV15 CHAIR

27 1/4"W x 33"D x 32"H





SUTTON 727

A. 727TV70 ARMLESS CHAIR

24"W x 32"D x 34"H

B. 727TV60 OTTOMAN

20"Diameter 18"H

11 gauge steel springs in back ensures lasting comfort

Precision tailoring includes more stitches per inch to meet contract standards, lock-stitched seams to prevent raveling, and unique sewing techniques that eliminates the lumps and bumps that result when using staples to tailor furniture.



Heavy 8.5 gauge steel springs in seat provide strength and flexibility

All Dacron backs are encased and "compartmentalized" in bags to prevent fiber migration and shifting of the padding



Velcro secured fabric

Seats and backs contain solid hardwood spring rails



SUTTON 727

The Sutton features graceful solid wood arms and tailored seat and back. The series can be ordered with or without arms. The perfect look for lounges and lobbies. Choose from hundreds of different patterns in wide array of colors. The covers are easy to clean, repair, or replace due to Velcro® Technology.

A. 727TV14 CHAIR

30"W x 32"D x 34"H

B. 727TV70 ARMLESS CHAIR

24"W x 32"D x 34"H



CARLSON 800LV

The Carlson Collection provides a feeling of stylish comfort. Designed with both style and durability in mind, the Carlson Collection utilizes Velcro® Technology for easy cleaning, replacement, and repair.



A. 800LV05 SOFA

Carlson Sofa with TV Land Slate fabric.
82"W x 35"D x 35 1/2"H

B. 800LV10 LOVESEAT (not pictured)

Carlson Loveseat with TV Land Slate fabric.
60"W x 35"D x 35 1/2"H

C. 800LV15 CHAIR

Carlson Chair with TV Land Slate fabric.
36"W x 35"D x 35 1/2"H



TV LAND SLATE



CONTEMPORARY 140LV

Already seen in universities across the country, the Contemporary Collection is great choice for anyone wanting that time tested classic. The collection features loose cushion back pillows and covers attached using Velcro® Technology. Choose from hundreds of different patterns in wide array of colors.



A. 140LV05 SOFA

76"W x 35"D x 32"H

B. 140LV10 LOVESEAT (not pictured)

54"W x 35"D x 32"H

C. 140LV15 CHAIR

30"W x 35"D x 32"H





APPALACHIAN 861LV

The Appalachian Collection is rich on traditional upholstery details while also utilizing modern Velcro Technology. The elegant welted rolled arms and cushions give the Appalachian Collection a regal look.

A. 861LV05 SOFA

83"W x 34 1/2"D x 36"H

B. 861LV10 LOVESEAT

61"W x 34 1/2"D x 36"H

C. 861LV15 CHAIR

37"W x 34 1/2"D x 36"H



CATAWBA 293LV

The Catawba's straight contemporary lines and comfortable cushions contribute a clean look to any lounge. Uses modern Velcro Technology.

A. 293LV05 SOFA

79"W x 34 1/2"D x 34 1/2"H

B. 293LV10 LOVESEAT (not pictured)

55"W x 34 1/2"D x 34 1/2"H

C. 293LV15 CHAIR

29 1/2"W x 34 1/2"D x 34 1/2"H



STERLING 760LV w/ TABLET ARM

This version of the Sterling is built for comfort and to serve. The swivel tablet tray provides a convenient place for reading materials and more. Tray can be specified in either arm and in your chosen finish.

760LV155 CHAIR

35 1/2"W x 35"D x 32 1/2"H



STERLING 760LV

Like its brethren 750LV series, this Sterling features a tight fitted seat built for comfort, stylish flared arms, and finished pyramid feet but does not offer the wing detail that extends over the arms. Built to last with a slightly different flair.

A. 760LV05 SOFA

81 1/2"W x 35"D x 32 1/2"H

B. 760LV10 LOVESEAT (not pictured)

59 1/2"W x 35"D x 32 1/2"H

C. 760LV15 CHAIR

35 1/2"W x 35"D x 32 1/2"H





STERLING w/ WINGS 750LV

Combining great style and functionality will make this group one that will stand the test of time. Features of the Sterling include a tight fitted seat with generously plump seat cushion, slightly flared arms and natural finished pyramid feet.

A. 750LV05 SOFA

81 1/2"W x 35"D x 32 1/2"H

B. 750LV10 LOVESEAT (not pictured)

59 1/2"W x 35"D x 32 1/2"H

C. 750LV15 CHAIR

35 1/2"W x 35"D x 32 1/2"H



CHELSEA 477

The rich contemporary design of the Chelsea upholstery collection features a stylishly block design with trendy finished chrome legs that create a refreshing look that is sure to enhance any living room decor. With the supportive seating and back cushioning, this furniture collection adds a deep comfort perfect for any lounge environment.

A. 477TV05 SOFA

82"W x 37"D x 29"H

B. 477TV10 LOVESEAT (not pictured)

58"W x 37"D x 29"H

C. 477TV15 CHAIR

36"W x 37"D x 29"H



ASHLEY 311LV

New to our lineup, the Ashley Collection is complimented by finished wood top arm trim and matching pyramid feet. Durable and comfortable, the Ashley Collection is great for the University Environment. The covers can be easily removed for cleaning, repair, or replacement thanks to the use of Velcro Technology.

311LV05 SOFA

79"W x 34 1/2"D x 34 1/2"H



311LV10 LOVESEAT

55"W x 34 1/2"D x 34 1/2"H

311LV15 CHAIR

29 1/2"W x 34 1/2"D x 34 1/2"H

ASHLEY ARMLESS CHAIR AND OTTOMAN



SEBRING 770LV w/ TABLET ARM

This chair is the workhorse of the Sebring series featuring not only a tablet arm but also an ottoman and an optional cup holder. The ottoman tucks conveniently under the chair when not in use and the swivel tablet arm provides a convenient surface for books or laptops.

770LV155 CHAIR

34"W x 35"D x 33"H





SEBRING 770LV

One of our most popular styles, the Sebring Collection's sleek lines and subtle sophistication go hand-in-hand with its strength and durability. Choose from hundreds of different patterns in a wide array of colors. The covers are easy to clean, repair, or replace due to Velcro® Technology.

A. 770LV05 SOFA

80"W x 35"D x 33"H

B. 770LV10 LOVESEAT (not pictured)

58"W x 35"D x 33"H

C. 770LV15 CHAIR

34"W x 35"D x 33"H



SEBRING 770LV w/ OTTOMAN

One of our most popular styles, the Sebring Collection's sleek lines and subtle sophistication go hand-in-hand with its strength and durability. Optional Ottomans are available. Choose from hundreds of different patterns in a wide array of colors. The covers are easy to clean, repair, or replace due to Velcro® Technology.

A. 770LV156 CHAIR

34"W x 35"D x 33"H



INGLEWOOD 767TV

The Inglewood's contemporary styling with solid wood arm caps and plush seat cushions is sure to add style and comfort to any environment. The collection features covers attached using Velcro® Technology. Choose from hundreds of different patterns in wide array of colors.



A. 767TV05 SOFA

82"W x 34 1/2"D x 34 1/2"H

B. 767TV10 LOVESEAT (not pictured)

58 1/2"W x 34 1/2"D x 34 1/2"H

C. 767TV15T CHAIR

34"W x 34 1/2"D x 34 1/2"H



INGLEWOOD 767TV w/ TABLET ARM

The Inglewood's contemporary styling with solid wood arm caps and plush seat cushions is sure to add style and comfort to any environment. The collection features covers attached using Velcro® Technology. Choose from hundreds of different patterns in wide array of colors.



767TV159 CHAIR

34"W x 34 1/2"D x 34 1/2"H





KESSLER 740LV

The Kessler Series combines the highest quality materials with tailoring like that of a fine suit. It is available in a wide variety of fabrics and faux leather. Please contact your sales representative today for more information.

A. 740LV05 SOFA

82"W x 35 1/2"D x 34"H

B. 740LV10 LOVESEAT (not pictured)

58 1/2"W x 35 1/2"D x 34"H

C. 740LV15 CHAIR

36"W x 35 1/2"D x 34"H



ROCKINGHAM 520LV

Combining great style and functionality make this group one that will not only last, but look good doing so. Comfortable seat with gently flared arms create a signature piece perfect for any room. Also available in natural wood finish (521LV).

A. 520LV05 SOFA

80"W x 37"D x 35 1/2"H

B. 520LV10 LOVESEAT (not pictured)

58"W x 37"D x 35 1/2"H

C. 520LV15 CHAIR

36"W x 37"D x 35 1/2"H



WESTMORELAND 704TV

The clean contemporary design of the Westmoreland features a rich exotic flair that creates an exciting style sure to enhance any lobby or lounge. Bring your home to life with the style and function of the contemporary Westmoreland.



A. 704TV82 SOFA

78 1/2"W x 37 1/2"D x 37"H

B. 704TV71 LOVESEAT

53 1/2"W x 37 1/2"D x 37"H

C. 704TV70 CHAIR

28 1/2"W x 37 1/2"D x 37"H

D. 704TV75 CORNER CHAIR

37 1/2"W x 37 1/2"D x 37"H

E. 704TV40 CHAISE

28"W x 60"D x 37"H



SUNBERRY 763

The Sunberry collection allows you to create numerous seating variations. Each piece is a separate upholstered piece that can be configured together to create different combinations. Add the corner piece to create a curved, contemporary look in your space.



A. 763TV68 RF CHAIR

30 1/2"W x 34 1/2"D x 31 1/2"H

B. 763TV69 LF CHAIR

30 1/2"W x 34 1/2"D x 31 1/2"H

C. 763TV70 ARMLESS CHAIR

23"W x 34 1/2"D x 31 1/2"H

D. 763TV74 CORNER CHAIR

67"W x 34 1/2"D x 31 1/2"H





SEYMOUR 285LV

The Seymour Collection was created for modern, loft living. The widened, lowered arms of the Seymour Collection definitely provide the foundation for a fresh, contemporary room.

A. 285LV05.MOD1 SOFA

86 1/2"W x 37 1/2"D x 36"H

B. 285LV10.MOD1 LOVESEAT (not pictured)

72 1/2"W x 37 1/2"D x 36"H

C. 285LV15 CHAIR

37"W x 37 1/2"D x 36"H



**ALSO AVAILABLE
WITH WIDER ARMS**



BRENTWOOD 739LV

The Brentwood Collection is as inviting as it is stylish. With its leather-like vinyl, white stitching sewing detail, plush cushions, and urban style, the Brentwood Collection surely makes a statement. Utilizing Velcro® Technology, the covers are easy to clean, repair, or replace.

A. 739LV05 SOFA

84"W x 38"D x 35 1/2"H

B. 739LV10 LOVESEAT

60"W x 38"D x 35 1/2"H

C. 739LV15 CHAIR

36"W x 38"D x 35 1/2"H



ARMSTRONG 464LV

With a unique design and rich contemporary style, the Armstrong is an exceptional accent that enhances the beauty and convenience of any living area. Orders for this chair require a minimum order, please see your sales representative.

A. 464LV305 SOFA

88"W x 38"D x 37"H

B. 464LV115 CHAIR

29 1/2"W x 33 1/2"D x 38 1/2"H

C. 464TV60 OTTOMAN

35"W x 25"D x 20"H



WORTHINGTON 456LV

The Worthington chair takes beautifully detailed upholstery and an elegant design to create a traditional style that is sure to enhance any decor. Orders for this chair require a minimum order, please see your sales representative.

456LV15 CHAIR

40"W x 36 1/2"D x 33 1/2"H





ALAMEDO 526LV

Journey back to yesteryear with this traditional living room set. Sofa is a full or queen sized sleeper. The Loveseat is also optionally available as a sleeper. The collection features covers attached using Velcro® Technology. Choose from hundreds of different patterns in wide array of colors. Orders for this chair require a minimum order, please see your sales representative.

A. 526LV05 SOFA
81 1/2"W x 36"D x 35"H

B. 526LV10 LOVESEAT
63"W x 36"D x 35"H

C. 526LV15 CHAIR
36"W x 36"D x 35"H



TOLEDO 785TV

If you're looking for traditional style, look no further than the Toledo series. Loose seat cushions offer ease of cleaning. Tight plush back and rolled arms offer comfort and a great look. Toledo offers hardwood frame and durability to last a lifetime.

A. 785LV05 SOFA
81 1/2"W x 36"D x 35"H

B. 785LV10 LOVESEAT
63"W x 36"D x 35"H

C. 785LV15 CHAIR
36"W x 36"D x 35"H



SELMA 450TV15

The covers can be easily removed for cleaning, repair, or replacement thanks to the use of Velcro Technology. Orders for this chair require a minimum order, please see your sales representative.

450TV15 CHAIR

32"W x 36"D x 35"H



WINSTON II 163TV

Vinyl upholstery in offers the luxurious look and feel of top quality leather with the benefit of protection. This contemporary design features the comfortable feel of plush pillow arms, divided bustle back cushioning perfect for any relaxing living room environment. Orders for this chair require a minimum order, please see your sales representative.

A. 163TV45 CHAIR

35 1/2"W x 36 1/2"D x 40"H



AVAILABLE ON GSA CONTRACT



LITTLETON 443LV

Traditional styling surrounds the Littleton chair and ottoman. With beautifully patterned upholstery and rolled arm design, this collection captures the essence of traditional elegance while holding on to a modern flair. Orders for this chair require a minimum order, please see your sales representative.

A. 443LV15 CHAIR

36"W x 37"D x 35 1/2"H

B. OTTOMAN

23"W x 18"D x 17"H



LAFAYETTE 471TS

With a sweeping contemporary design surrounded by soft comfortable upholstery, the Lafayette upholstered chair creates an exciting style that is sure to awaken any lounge decor. Orders for this chair require a minimum order, please see your sales representative.

471TS15 CHAIR

37"W x 36 1/2"D x 38"H



RICHMOND 674LV

Alive with vibrant color and rich with contemporary style, the Richmond upholstery collection can wake up any living environment with its dynamic beauty. This furniture features a plush pillow back design and stuffed cushions to add a cradling comfort for ultimate relaxation.

A. 674LV05 SOFA

78 1/2"W x 37 1/2"D x 37"H

B. 674LV10 LOVESEAT

53 1/2"W x 37 1/2"D x 37"H

C. 674LV15 CHAIR

28 1/2"W x 37 1/2"D x 37"H

D. 674LV39 CHAISE

28"W x 60"D x 37"H

E. 674LV60 OTTOMAN

30"W x 24"D x 20"H



SCOTTSDALE 404TV14

Designed with a subtle contemporary style and subdued earth tones, The Scottsdale chair creates a warm inviting atmosphere. Orders for this chair require a minimum order, please see your sales representative.

404TV14 CHAIR

38"W x 39"D x 39 1/2"H



Fabrics

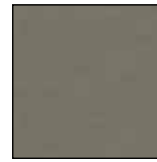
CHOOSE ANY OF OUR AVAILABLE FABRICS FOR SOFAS, LOVESEATS AND CHAIRS. CHECK WITH YOUR SALES REPRESENTATIVE FOR FABRIC AVAILABILITY.



TH090 ARCHES
BURGUNDY



TH016 DECO
TOPAZ



TH044 HARMONY
GREY



TH011 BONAIRE
BLUE RIDGE



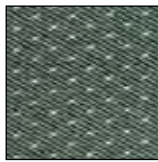
CP131 DILLON JAVA



TH008 HARMONY
RED



TH108 BONAIRE
CHIANTI



A1281 DUET ASH



A960 HEWITT
CARBON BLACK



J307 CANTERBURY
GREEN



TH118 FIJI PLUM



J283 HIGHLANDS
CHESTNUT



J252 CANTERBURY
OLIVE



TH022 FLORA CHILI



J142 INTERWEAVE
BROWN



J296 CANTERBURY
PURPLE



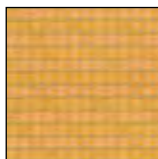
A1169
FOUNDATION
PENDULUM



J22 INTERWEAVE
EMERALD



J292 CHAINSTITCH
STERLING



J289 FOUR SQUARE
NUGGET



J165 INTERWEAVE
FROSTED BLUE



J312 CHAINSTITCH
TITAN



PI04 GALAXY KELLY
GREEN VINYL



J225 INTERWEAVE
GOLD DUST



TH018
CHARLESTON NAVY



PI17 GALAXY
LIPSTICK VINYL



J60 INTERWEAVE
KHAKI



MAC03 CONOVER
GOLD



PI07 GALAXY
PURPLE



J527 INTERWEAVE
MERLOT

	J16 INTERWEAVE WALNUT		TH121 MARATHON SAPPHIRE		A676 SHIRE BLACK CHERRY
	J426 JASMINE CHOCOLATE		A974 MATRIX FLAG BLUE		A1459 SHIRE GREEN BAY
	J412 JASMINE MOJAVE GOLD		MTG013 MESA CHOCOLATE		DT15 STACKS FIESTA
	J132 JEWEL AUBERGINE		J361 MIRAGE MINT CIDER		TH102 SYMPHONY MARS
	J241 JEWEL CORDOVAN		GL013 OBSESSION FAWN		A1082 TRAPEZE MINT CHOCOLATE
	J280 JEWEL EMERALD		J163 OLD WORLD CHABLIS		A1141 TV LAND HUNTER GREEN
	J448 JEWEL FOREST		TH002 OLYMPIC BLACK		A1087 TV LAND SLATE
	MTG008 LEXI BLACK		A1139C PARLOUR JASPER		A1088 TV LAND SURFSIDE
	TH030 MAINFRAME BAY BLUE		J72 PHOENIX SAILOR		J78 VEGA SALSA
	TH004 MAINFRAME BRUSHED GOLD		J524 POPCORN RUSTIC BROWN		A1316 WHIRLIGIG TAHOE BLUE
	TH058 MAINFRAME TRUFFLE		A462 SHERPA IVY LEAGUE		PI01 GALAXY ROYAL BLUE VINYL

3D Space Planning



VISUALIZE

PLAN



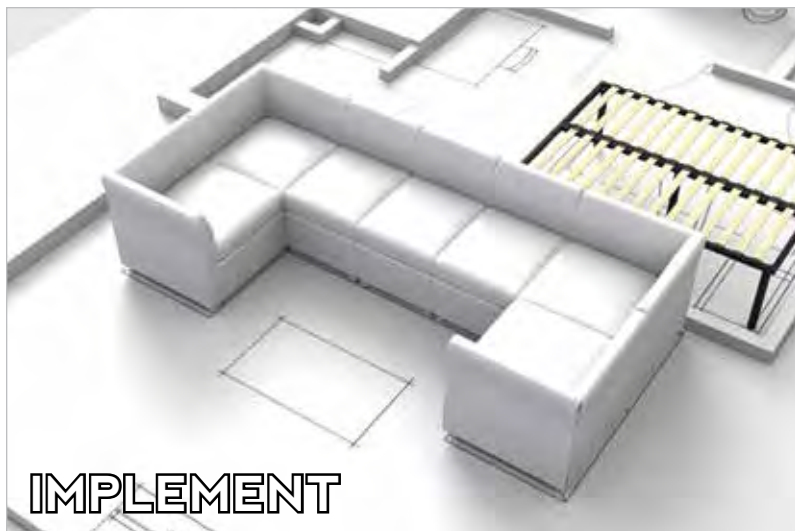
TAKING YOUR VISION TO THE NEXT LEVEL

University Loft Company specializes in using 3D technology to help you plan your next renovation or new construction project.

With this service, you will be able to visualize your space with our furniture before undergoing major construction.

You will work with one of our knowledgeable representatives to determine what furniture will work best for your needs.

Next, we pass your project dimensions and job specifications onto our media department. It's at this point that your blueprints turn into a complete 3D visual that shows you exactly how our product will fit into your space.



IMPLEMENT

Contact your sales representative today to find out more about our 3D Space Planning services.

UPHOLSTERY FABRIC

Once you have chosen the style of your upholstery, the next step is choosing the perfect fabric. University Loft Company has hundreds of contract grade fabrics and vinyls for you to choose from, ensuring that you never have to choose quality over style. A variety of choices are available on our web site at www.uloft.com.

If you have a specific pattern or color scheme in mind, we can arrange for fabric swatches to be sent straight to your site.

FABRIC TERMS:

GRADE: Grade is determined by the quality and cost of the fabric. 'Contract Grade' refers to very durable fabrics suitable for furniture placed in public locations.

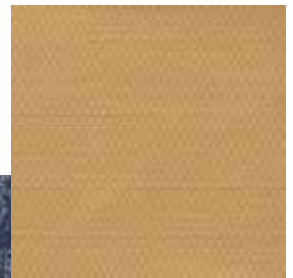
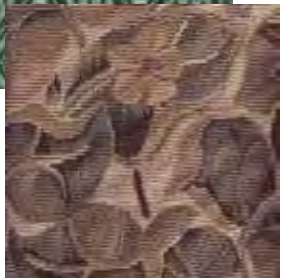
QUALITY: The fabric quality is determined by testing the fabric. The 'double rub' test is performed by a machine simulating the seating motion of normal ware.

SCOTCH GUARD: is used for repelling spills and stains on any fabric surface.

VELCRO® UPHOLSTERY: is a method for attaching fabric coverings to frames without using staples or tacks. Unlike staples or tacks Velcro® attached fabric will not tare at stress points and allows the customer to replace damaged, stained or worn coverings.

PLEASE CONTACT YOUR SALES REPRESENTATIVE OR PROJECT MANAGER FOR FURTHER DETAILS

800-423-LOFT (5638).



QUALITY ASSURANCE FEATURES

MODULAR FRAME CONSTRUCTION

- Arms may be removed for delivery or any necessary adjustment
- Double side rails provide extra strength
- Hardwood spring rails tenon joined at each side and screwed to center support
- CNC machined shaped parts for consistency

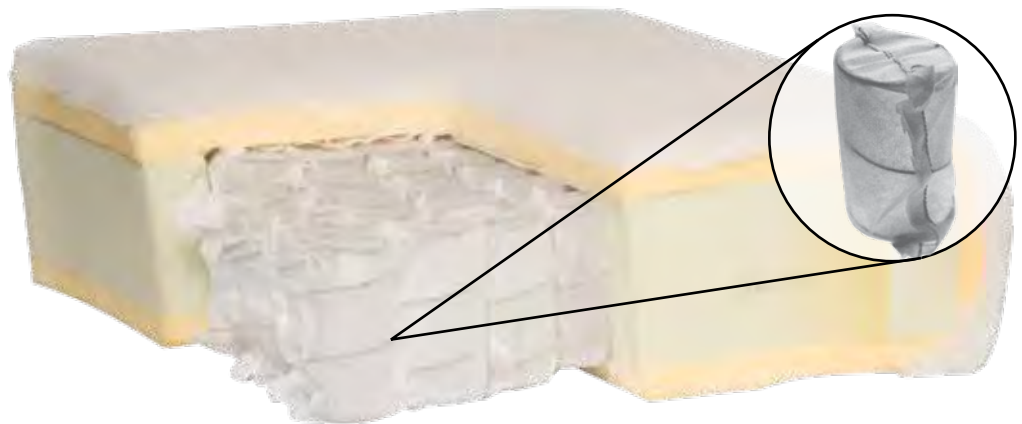
VELCRO® TECHNOLOGY

- All upholstered pieces have separate sewn covers which may be replaced without extensive labor or upholstery costs
- Replaceable sewn cover may be installed by the customer with ease
- Tailoring adjustments and re-upholstery are simplified



CONSISTENT QUALITY

- Tailoring is improved by sewing outside arms to top arms, and outside backs to inside backs eliminating the need for metal tack strips
- Unitized sewing improves the look of arm and back upholstery, as well as skirted styles
- Pre-fabricated foam components for arms and back create smooth, consistent look and feel
- 8.5 gauge springs are used in the seat and 11 gauge springs are used in the back of our upholstered furniture



FOAM & POCKETED SPRING CUSHIONS

The seating is a combination of high-density polyurethane foam and pocketed steel coil inner-springs. Each steel coil is encased in its own non-woven fabric pocket, which allows each spring to work independently.

UNIVERSITY LOFT UPHOLSTERY CRAFTSMANSHIP

- Seats and backs contain solid hardwood spring rails
- All removable pillows are zippered using a hidden pocket for easy adjustment access or replacement
- All Dacron backs are encased and "compartmentalized" in bags to prevent fiber migration and shifting of the padding
- Sides and backs are reinforced and padded to provide a 360° elegant look
- Machine positioned spring clips provide comfort and stability
- Heavy 8.5 gauge steel springs in seat provide strength and flexibility
- 11 gauge steel springs in back ensures lasting comfort
- Fiber-wrapped 2.0" high density CAL117 compliant (fire retardant) cushion foam
- Fiber-blown pillows provide comfort and consistent shape
- Precision tailoring includes more stitches per inch to meet contract standards, lock-stitched seams to prevent raveling, and unique sewing techniques that eliminates the lumps and bumps that result when using staples to tailor furniture.
- Velcro® Technology allows for easy adjustments and affordable fabric replacements



Need to replace fabric? With University Loft's Velcro® appointed coverings, changing upholstery fabric has never been easier.



Step 1

Unscrew feet



Step 2

Remove bolts securing arms



Step 3

Remove arms from chair/sofa body



Step 4

Remove fabric from body of chair/sofa
Replace with new fabric



CHECK OUT OUR VELCRO® UPHOLSTERY VIDEO

<http://youtube.com/watch?v=U19zmc1TFDc>

How to be happy at work

Ever feel like your workday consists of nothing more than staring at the clock waiting for that "magic number" to appear that signals the end of the day? Do you spend your time focusing on not falling asleep instead of on how you can be more productive? Do you live for the weekends and dread the sunrise every Monday? If this sounds like you, then you may benefit from some of these tips provided by www.persistenceunlimited.com.

1. Eat breakfast - If you skip breakfast, you won't be at your best during the morning. You will more likely gorge yourself at lunch and have a sleepy afternoon. So eat something, anything (within reason) so you can ensure a smooth start.

2. Get plenty of sunshine - Sun in the morning signals the body and mind to wake up. So instead of reaching for a big cup of Joe, put on your shoes and go outside.

3. Get aerobic exercise - While you are getting your sunlight, use it as an excuse to get a good walk or jog in. Exercise lowers stress, gets your blood moving and wakes you up.

4. Avoid RSS, EMAIL or phone before 10 am - RSS, email and



phone demand immediate attention, whereas your goals and work for the day can easily be brushed to the side. If you can avoid the urgent and unimportant until 10 or 10:30, you've got a fighting chance at getting all of the important tasks done.

5. Think positive thoughts not negative - Seems simple, but many people never do it. Instead of looking on the worst side, try to see the bright side. Ask yourself "what is the advantage of this situation?" "How am I benefiting from this? What am I learning?" These are all good questions that you can ask in all negative situations to turn them to the positive.

6. Take breaks - If you push on one task for too long your work starts to suffer. It's easy to become tired and frustrated. So every 30 - 45 minutes, take 5. Get up from your desk, stop what you are doing

and get your mind off your work for awhile. You'll find you'll return with more ideas and renewed energy.

7. Go for a mid-day walk - Again, I'm harping on the exercise. Getting a brisk walk in over lunch (even if for only 10 minutes) will get you to feeling better about your afternoon. Where most others are sitting around digesting, you can be energizing.



8. **Avoid gossip** - One drain on your day is gossip. It may seem fun and exciting to learn some juicy tidbit about your office mate or boss. But good gossip is always negative talk. Negative talk starts the pendulum swinging toward negativity.

9. **List your top 5-7 objectives for the day and break the list down to 3** - It's good to get in the habit of making lists, it's bad to make long lists. If you've got more than 5 items on your list, break it down to the top 3 things (you can always go back and edit in another task or two). But with a list of 20 things, how can you not be overwhelmed? 3 is a manageable, magical number. Break your list down to 3. Anybody can do just three things right?

10. **Understand before you react to other people's "urgent" requests** - When someone else asks you for help with a project or some other urgent need, practice

saying "what's your deadline on this? Or when do you need this done?" Then schedule the request into your day. Most people when asked one of those questions realize their request is not as urgent as they had made it out to be and will set a future date. That way, you can go back to working on one of your top three activities.

Now, I'm not saying that practicing these ten things will automatically propel you into a magical utopia where every day at work is thrilling and Friday always comes quickly. It is a job after all, and it's called work for a reason. However, these tips can help to make your workday more productive and more enjoyable. So tomorrow morning, grab a granola bar

and skip the coffee. Take a walk outside during your lunch break. Make a list of your top priorities and refuse to be overwhelmed by the longer list of things vying for your attention. Smile at your co-workers and walk away from the break-room gossip session. You'll likely find that the day is much better than you expected when you crawled out of bed.



James Jannetides coaching staff.

Get What You Pay For

A Quality Installation Team That Will Exceed Your Expectations!



World Wide Installation!

We will unpack, assemble whatever pieces need to be assembled and place the furniture in your rooms!

"The installation team was fast, efficient, courteous, and careful. The team was incredibly positive and professional. We would have them back any time!"

- The SEED Foundation

FAST, EFFICIENT, KNOWLEDGABLE, and COURTEOUS!



TERRA VERDE INSTALL TEAM

800.423.5638





UPHOLSTERED FOLDING CHAIR

Great for meeting places and assembly halls, the Upholstered Folding Chair is lightweight, yet built with the same durability as our classic Ply Chairs. These chairs fold and store easily, can be stacked to minimize storage space and can even be hung on a wall for easy access.

A. 10110 UPHOLSTERED FOLDING CHAIR

19 1/8"W x 21 1/2"D x 32 1/8"H







CHROME STACK CHAIR

Our chrome frame stack chair stands up against the competition. This chair features a support brace for stacking and is great for all events.

A. SC101 CHROME STACK CHAIR

Available with Charcoal Grey Upholstery.

- Padded seat and back
- Seat and back contain fire retardant foam
- Durable nylon glides prevent floor scratches
- Scratch resistant chrome finish
- Can support 300 lbs for up to 24 hours

18"W x 21 1/2"D x 33"H

Seat Height: 18"



MAXIMIZE STORAGE BY STACKING







UPHOLSTERED STACK CHAIR

The Upholstered Stack Chair combines stacking and comfort. This chair is powder-coated black with Charcoal Grey Upholstery.

A. SC104

- Padded seat and back
 - Padded arms for comfort
 - Seat and back contain fire retardant foam
 - Durable nylon glides prevent floor scratches
 - Scratch resistant powder-coated finish
 - Can support 300 lbs for up to 24 hours
- 22 1/2"W x 25 1/4"D x 34"H



MAXIMIZE STORAGE BY STACKING







BLACK STACK CHAIR

This steel stack chair features black finish and black vinyl seat and back. Added support brace below seat provides support for stacking.

A. SC105-XM005 BLACK STACK CHAIR

- Padded seat and back
 - Seat and back contain fire retardant foam
 - Durable nylon glides prevent floor scratches
 - Scratch resistant powder-coated finish
 - Can support 300 lbs for up to 24 hours
- 17 1/4"W x 22 1/2"D x 32 1/4"H



MAXIMIZE STORAGE BY STACKING







METROPOLITAN OFFICE CHAIR

The Metropolitan Office Chair is a pillow back office chair with chrome base and leather seat and back. This chair is ideal for any executive or home office. The three independent cushions conform to the natural curvature of the spine and provide excellent lumbar support.

A. 80174 METROPOLITAN

- Leather appointed seating surface
- Seat cushion features memory foam
- Adjustable seat height, tilt and swivel movement
- Long metal legs prevent tipping

22 5/8"W x 25 3/4"D x 41 3/8 - 45 1/4"H



CURVED AND PADDED FOR CURVATURE OF SPINE AND LUMBAR SUPPORT



OUR HARDWOOD IS ECO-FRIENDLY AND STRONGER THAN OAK

ULC REMAINS COMMITTED TO USING SOLID WOOD THAT IS ENVIRONMENTALLY FRIENDLY

At University Loft, we've made a conscious and strategic decision to do what we can to help preserve our environment. We feel certain that if we do not protect the environment, we will have nothing for future generations to inherit. And as a manufacturer, we know that we must guard our natural resources even as we maximize our production capabilities. With this in mind, ULC uses environmentally farmed timbers in our furniture production so we do not contribute to deforestation.

Why is this important? Worldwide, more than 3/4 of the planet's original primary forests have already been destroyed or degraded. Still, irresponsible transnational corporations continue to engage in destructive logging for wood and paper production. The result? Each year tropical rainforests alone are reduced at a rate equivalent to an area the combined size of the Netherlands and Switzerland.

Worldwide, forests are under attack due to harvesting practices widely used by logging industries. Deforestation and the destruction of the environment has become an enormous problem. That's why, in 1998 with Executive Order 13-101, President Clinton mandated that Federal agencies use

any resources available to them to "green" the government. At University Loft Company, we recognize the urgency of this issue and support environmentally responsible efforts at all levels.

THE MANY ADVANTAGES OF UNIVERSITY LOFT'S ENVIRONMENTALLY FARMED TIMBER

At ULC, we know that our customers expect only the best from us. That's why - in support of our environmental commitment - we use Hevea Brasiliensis (HB), an eco-friendly species of tree we refer to as Environmentally Farmed Timber, or EFT. Classified as a hardwood, HB has been proven stronger than Northern Red Oak in independent lab testing.

Another benefit of HB is that when finished, it looks virtually identical to natural oak. With mostly straight grain with few concentric markings, it's an attractive and durable solid wood furniture material.

HB is also the environmentally responsible choice. During its growth cycle, HB produces a natural form of latex that is tapped from its trunk to be used in the production of rubber. Hevea Brasiliensis produces latex for 20 years, after which it is cut down for timber use. Since the late 1800's, HB trees have been farmed, grown for their rubber and then harvested for timber.



HARDWOOD HEVEA BRASILIENSIS PROVEN STRONGER THAN OAK IN LAB TEST

Northern Red Oak is often considered the standard for strength and durability in furniture production. But at University Loft, we've found an alternative that's been proven stronger than oak in indepen-

dent laboratory testing.

In one such test, the "screw pull" test, HB broke at 160 lbs. of pressure while Northern Red Oak snapped under 140 lbs. of pressure. This test and others have shown time and again that HB is a superior material for furniture manufacturing.

BETTER HARDWOOD AND SUPERIOR CONSTRUCTION WIN THE STRENGTH TEST AT FEDERAL TESTING LABORATORIES

At the request of Southern Illinois University to determine the quality of Hevea Brasiliensis, University Loft Company compared a complete range of our case goods against a national competitor during independent testing at Federal Testing Laboratories. In these tests, the products endured repeated cycles of pressure at a certain weight.

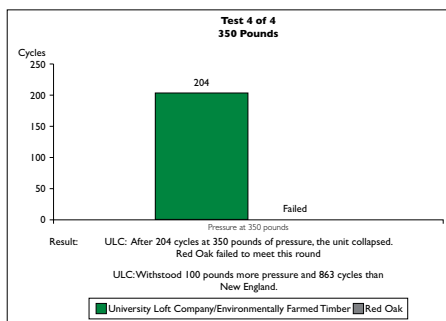
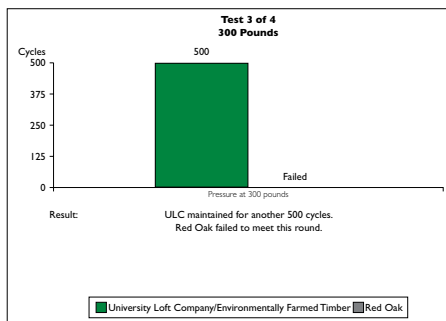
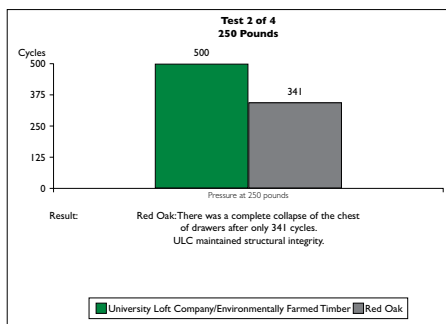
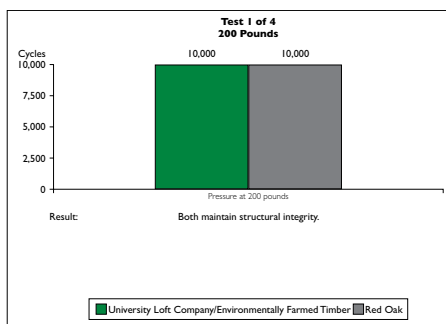
As shown in the test result diagrams in Figure 1, one such test involved ULC's 3-drawer chest, constructed with HB. The ULC chest endured 204 cycles

at 350 lbs. before structural integrity was compromised. Our competitor's product, made from Northern Red Oak, failed after 341 cycles of only 250 lbs. This test, among others, proved that HB is stronger than Northern Red Oak (and ideal for furniture manufacturing), and that ULC uses superior construction methods to complement the native strength of the HB hardwood.

HEVEA BRASILIENSIS IS ENVIRONMENTALLY FARMED TIMBER

University Loft Company purchases our HB from farms certified by The Malaysian Timber Council and from the SCS Forest Management Program endorsed by the Forest Stewardship Council which ensures farm quality, land management, and work practices. Our staff in Malaysia regularly visits these farms and saw mills to guarantee that our strict quality standards continue to be upheld.

Hevea Brasiliensis is a managed crop. It is laid out in sectors and harvested on a 20-year plan. When HB trees are 3 to 4 years old, they are tapped for latex. This latex is used to produce tires, surgical gloves, and other rubber products. In the past, HB trees that had exhausted their latex supply were burned or left to rot. In time, however, it was discovered that HB could be dried to a hardwood suitable for furniture production. With virtually no timber waste after years of productive latex tapping, HB is indeed an eco-friendly Environmentally Farmed Timber.



PLEASE NOTE THAT THE FEDERAL TESTING LABORATORIES CONDUCTED THIS TEST





ULC MAINTAINS WORKFORCE STANDARDS AND BENEFITS AROUND THE GLOBE

At University Loft Company, we import raw material from Malaysia, where, governed by the Malaysian Timber Industry Board, they maintain strict guidelines for safe environmental and labor practices.

Malaysia is an advanced country with a complex economic system. Like the United States, Malaysia has strict labor laws which include a 40-hour work week, an Employee Provident Fund [similar to a 401(K)], and an Insurance Government Fund (similar to Social Security in the U.S.). Malaysian law also regulates the use of child labor similar to U.S. laws.

University Loft Company is committed to its employees and we believe that every employee has rights to fair and ethical treatment. By choosing to position our workforces in places like Malaysia and the United States, we are supporting the world's economy while doing what we can to help the environment.

HB TREES HAVE THE 3-TO-1 ENVIRONMENTAL ADVANTAGE OVER OAK

HB trees take 20 years to grow to harvestable maturity. Oak trees take 60 years. In other words, 3 Hevea Brasiliensis trees can be grown and harvested in the time it take for one oak tree to be ready to be milled. This 3-to-1 HB advan-



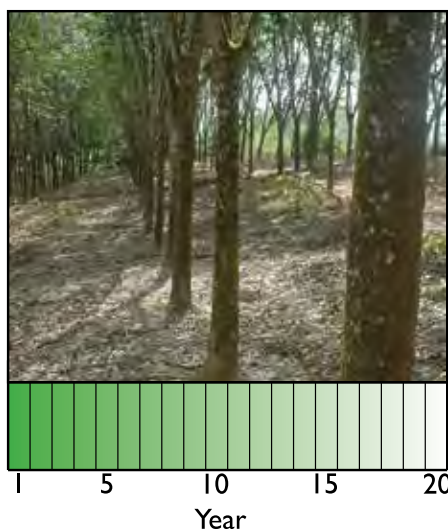
tage demonstrates the sustainability of this natural resource.

Although many logging companies have begun using responsible forestry management practices, this typically only includes planting additional oak seedlings for every full-grown tree cut down. This is a good start as a hedge against deforestation, but it will still take at least 60 years for each of these trees to reach a harvestable diameter. In that same time frame, 3 full-size HB trees can

be harvested for furniture production by University Loft. Because of this, we believe our use of this Environmentally Farmed Timber is the eco-responsible way to supply our furniture production without depleting the world's forests.

HB TREATMENT CLASSIFIED AS SAFE BY THE EPA

Hevea Brasiliensis is kiln dried. This process subjects the wood to temperatures that kill any insect that might be in the wood. That means that a smaller amount of chemical treatment is necessary. While almost all wood must be treated during the drying process, HB is treated with a compound of Boric acid and Borax. This guards against infestation after drying. Because our HB is pressure treated rather than dipped, the process also ensures absorption at the cellular level as opposed to surface-only absorption. Another advantage of



this treatment is that it actually helps make the wood harder, contributing to its greater-than-oak strength.

In addition to being ideal for furniture production, HB has been proven safe by the United States Environmental Protection Agency; and is approved for use in retail as a base material for bowls, tables, spoons, knives and more.

For more information, please visit:
www.epa.gov
www.greenpeace.org

UNIVERSITY LOFT'S GREEN PLAN

To maintain commitment and focus in our environmental initiatives, ULC utilizes a Green Plan. A Green Plan is a resource the Greenpeace organization defines as containing long-term environmental strategies that ensure a high quality of life for present and future generations.

A successful Green Plan considers all aspects of the environment and is developed through consultation with major social sectors. It pulls together a society's intellectual, scientific, and economic resources to implement a responsible, workable plan for environmental prosperity. Green plans can be developed for a country, a state, a region, a city, or – as with University Loft Company – an environmentally-responsible company or organization.

Any good Green Plan must be long-term and comprehensive; and it will clarify environmental goals and translate them into specific actions. Green plans consider not only environmental, but also economic conditions.



Under the direction of ULC's President and CEO James Jannetides, University Loft Company was an early adopter of green initiatives. In January 1999, Jannetides drove the company to become a model for all businesses in caring responsibly for the environment, now and for future generations. The ULC plan, encouraged by the establishment of the Governor's Green Government Council, represented the first step of any furniture manufacturing company toward environmental protection.

The true and continuing effect of this initiative is that it changes how businesses purchase products. Working cooperatively, businesses find new ways of sharing "green" knowledge and best practices while involving an ever-increasing number of employees, suppliers and clients. By purchasing furniture of environmentally sound material produced in a sustainable and eco-friendly manner – from an eco-conscious producer like University Loft Company – customers can help support a healthier global environment.



ULC SALUTES CUSTOMERS WHO HAVE CHOSEN "GREEN" BY USING THE FARMED TIMBER, HEVEA BRASILIENSIS.

Adelphi University
Alabama A & M University
Alabama School of Math & Science
Alderson Broaddus College
Alverno College
Ancilla College
Anderson University
Appalachian State University
Arizona Christian College
Arizona State University
Arizona Western College
Arkansas School for Mathematics & Science
Arkansas State University
Arkansas Tech University
Asbury University
Ashland University
Ashford University
Assumption College
Atlanta Christian College
Augsburg College
Augustana College
Aurora University
Baker College of Flint
Baker College of Owosso
Baldwin Wallace University
Baptist College of Florida
Baptist Rehabilitation Institute
Barnard College
Barry University
Baylor School
Bedford School
Belmont Abbey College
Benedict College
Benedictine College
Benedictine University
Bentley College
Bethel Bible Village
Bethune Cookman University
Black Hills State University
Bloomsburg University
Bluefield College
Boise State University
Bradley University
Brandeis University
Brevard College
Brewton-Parker College
Briar Cliff College
Bridgewater College in Virginia
Bryant University
Buena Vista University
Cal State Sacramento
California Baptist University
California College of Arts & Crafts
California Institute of Technology
California Polytechnic - San Luis Obispo
California State University - Chico
California State University - Monterey Bay
California State University - Dominguez Hills
California State University - Fresno
California State University - San Bernardino
California State University - San Francisco
California State University - Stanislaus
California University of Pennsylvania
Campbell University
Carleton College
Carnegie Mellon University
Carroll College
Carthage College
Catawba College
Cate School
Centenary College
Central Iowa Community College
Central Methodist College
Central Michigan University
Chowan University
Christ for the Nations College
Christian Brothers University
Clarion University of Pennsylvania

Clark Atlanta University
Clark University
Clarkson University
Clearwater Christian College
Clemson University
Coastal Carolina University
Coffeyville Community College
Colgate University
College of Mount Saint Vincent
College of Saint Francis
College of Saint Scholastica
College of Saint Elizabeth
Colorado Christian University
Colorado College
Colorado Mountain College
Colorado State University
Columbia College
Concord College
Concordia University
Concordia University - Saint Paul
Converse College
Core Concepts of Florida
Corinthian Colleges
Cornell College
Cornell University
Creighton University
Crossroads Bible College of Indianapolis
Crown College
Crown Point Institute of Technology
Cumberland University
Curry College
Dallas Christian College
Dakota State University
Davis College
Delaware State University
Dodge City Community College
Drexel University
Duquesne University
Earlham College
East Coast Bible College
East Texas Baptist University
Eastern Michigan University
Edinboro University
Edward Waters College
Elizabeth City State University
Elizabethtown College
Ellsworth Community College
Emmanuel College
Emmaus Bible College
Emory & Henry College
Eureka College
Fairfield University
Fairleigh Dickinson University
Faulkner University
Fisk University
Florida Atlantic University
Fort Scott Community College
Franklin & Marshall College
Fresno Pacific University
Furman University
Gallaudet University
George Mason University
Georgetown College
Georgetown University
Georgia Southwestern State University
Gordon College
Grace College
Grambling State University
Grand View University
Green Acre Bahai School
Greensboro College
Greenville College
Harding University
Hanover College
Hardin - Simmons University
Haskell Indian Nations University
Hastings College
Heidelberg University

Henderson State University
Hendrix College
Hesser College
High Point University
Highland Community College
Hocking College
Hofstra University
Hollins University
Holmes Community College
Homes Bible School
Houston Baptist University
Howard University
Huntington College
Hyles - Anderson College
Illinois Central College
Illinois College
Indiana Diving Academy
Indiana School for the Blind & Deaf
Indiana State University
Indiana University Purdue University - Fort Wayne
Indiana University Purdue University - Indpls
Indiana Wesleyan University
International Business College
International College of Hospitality Mgmt
Iowa Central Community College
Iowa Lakes Community College
Jackson College
James Madison University
Jarvis Christian College
Jefferson College
John Brown University
John Carroll University
Johns Hopkins University
Johnson & Wales University
Johnson Bible College
Johnson C. Smith University
Johnson University
Judson University
Kansas City Art Institute
Kansas State University
Keene State College
Kent School
Kent State University
Keystone Junior College
King College
Lamar University
Lane College
La Roche College
La Sierra University
Lake Forest College
Lake Superior State University
Lambuth University
Lawrence University
Limestone College
Lee University
Lenoir-Rhyne University
LeTourneau University
Limestone College
Lincoln Christian University
Lindenwood University
Lock Haven University
Louisiana State University
Louisville Collegiate School
Loyola University - New Orleans
Lubbock Christian University
Luther College
MacMurray College
Maine School of Science & Mathematics
Marantha Baptist Bible College
Marian University
Mars Hill University
Marygrove College
Massanutten Military Academy
McKendree College
McMurry University
Medaille College
Memphis College of Art



Mercer University
 Mercyhurst College
 Messiah College
 Michigan Technological University
 Molloy College
 Montana State University - Bozeman
 Montana Tech
 Moody Bible Institute
 Mooseheart Child City & School
 Mount Ida College
 Mount Mercy College
 Mount Olive College
 Mount Saint Mary's College
 Mount Saint Clare College
 Multnomah Bible College
 Murray State College
 NW Christian College
 Nashville Auto Diesel College
 Nebraska Christian College
 Newberry College
 Nichols College
 Nicholls State University
 Norfolk State University
 North Carolina A & T State University
 North Central College
 North Georgia College
 Northeast Community College
 Northeast Oklahoma A&M University
 Northeastern University
 Northern Michigan University
 Northern State University
 Northwest Christian University
 Northwest Iowa Community College
 Northwest Nazarene University
 Northwestern Oklahoma State University
 Northwestern University
 Northwood University
 Oakdale Christian Academy
 Oakwood University
 Ohio University
 Ohio Wesleyan University
 Oklahoma City University
 Old Dominion University
 Otero Junior College
 Ouachita Baptist University
 Our Lady of the Lake University
 Oxford College of Emory University
 Pacific Union College
 Park University
 Philander Smith College
 Philadelphia University
 Piedmont College
 Pine Manor College
 Pittsburgh Technical Institute
 Point Park College
 Portland State University
 Post University
 Potomac State College
 Pratt Community College
 Presentation College
 Queens University of Charlotte
 Quincy University
 Reinhardt University
 Rhode Island School of Design
 Richard Stockton College of New Jersey
 Robert Morris College
 Rochester College
 Rochester Institute of Technology
 Rocky Mountain College
 Roger Williams University
 Rogers State University
 Rollins College
 Rose Hulman Institute of Technology
 Rutgers University - Camden
 Saint Anselm College
 Saint Augustine College
 Saint Joseph's College
 Saint Louis Priory School

Saint Louis University
 Saint Xavier University
 Salem Academy & College
 Salisbury University
 Sam Houston State University
 San Diego State University
 San Francisco Ballet
 Shenandoah University
 Shippensburg University
 Simpson College
 Snead State Community College
 South Dakota State University
 South Georgia Technical College
 Southeastern Oklahoma State University
 Southern Adventist University
 Southern Baptist Theological Seminary
 Southern Illinois University - Carbondale
 Southern Illinois University - Edwardsville
 Southern New Hampshire University
 Southern University
 Southwestern Baptist Theological Seminary
 Southwestern Oregon Community College
 Spring Hill College
 St. John's University
 State University of New York - Albany
 State University of New York - Alfred
 State University of New York - Binghamton
 State University of New York - Buffalo
 State University of New York - Cortland
 State University of New York - Delhi
 State University of New York - Morrisville
 State University of New York - New Paltz
 Stevens Institute of Technology
 Stillman College
 Stuart Hall School
 Sul Ross State University
 Teachers College
 Temple University
 Tennessee State University
 Texas Southern University
 Texas Tech University
 The Art Institute of Pittsburgh
 The Cleveland Institute of Art
 The Hill School
 The Seed School
 Thiel College
 Tiffin University
 Towson State University
 Treasure Valley Community College
 Trine University
 Trinity International University
 Trinity Lutheran Seminary
 Tri-State University
 Tulane University
 Tuskegee University
 Union College
 Union University
 University Maryland Baltimore County
 University of Akron
 University of Alabama - Huntsville
 University of Arkansas
 University of Arkansas - Pine Bluff
 University of California - Irvine
 University of California - Los Angeles
 University of Colorado - Boulder
 University of Connecticut
 University of Dallas
 University of Delaware
 University of Denver
 University of Evansville
 University of Houston
 University of Incarnate Word
 University of Indianapolis
 University of Iowa
 University of Louisville
 University of Maine
 University of Maryland - Eastern Shores
 University of Miami

University of Missouri - Kansas City
 University of Mount Olive
 University of Nebraska
 University of Nevada - Las Vegas
 University of New England
 University of New Hampshire
 University of New Mexico - Albuquerque
 University of North Carolina - Asheville
 University of North Carolina - Chapel Hill
 University of North Carolina - Greensboro
 University of Notre Dame
 University of Oklahoma
 University of Oregon
 University of Pittsburgh
 University of Portland
 University of Rio Grande
 University of Saint Francis
 University of San Francisco
 University of Science & Arts
 University of South Dakota
 University of Southern Indiana
 University of Southern Mississippi
 University of Tampa
 University of Tennessee - Chattanooga
 University of Tennessee - Knoxville
 University of Texas - Austin
 University of the Ozarks
 University of the Pacific
 University of the Sciences in Philadelphia
 University of Virginia College
 University of West Florida
 University of West Indies - Mona
 University of Western Ontario
 University of Wisconsin - Madison
 University of Wisconsin - Marathon County
 University of Wisconsin - Oshkosh
 University of Wyoming
 Urbana College
 Utah State University
 Utica College
 Valdosta State University
 Valley City State University
 Valparaiso University
 Villanova University
 Vincennes University
 Voorhees College
 Wabash College
 Warner University
 Warren Wilson College
 Washington Adventist University
 Washington University of St. Louis
 Wayland Baptist University
 Weatherford College
 West Chester University
 Western Iowa Tech Community College
 Western Michigan University
 Westminster College
 Westmont College
 Wheeling Jesuit University
 Wheelock College
 Wilfrid Laurier University
 William Carey College
 William Penn University
 Wingate University
 Wisconsin Lutheran College
 Wofford College
 Yale University
 Youngstown State University



BY THE NUMBERS



483,050

In 2013, Energy Management Systems LLC awarded University Loft Company the 'Energy Efficiency Leadership Award' for reducing annual energy consumption by 483,050 kWh

Air pollution was reduced by 376 tons of CO2 annually.

\$3,000,000,000

In 2009, Americans threw away 10.39 million tons of steel. That amounts to more than \$3 billion in wasted material, or enough to buy lunch for everyone in the United States!



ONE

Over the course of its life, a single tree can absorb one ton of carbon dioxide.

One tree can absorb as much carbon in a year as a car produces while driving 26,000 miles.

88%

Steel is the most recycled material on the planet, more than all other materials combined. Steel retains an extremely high overall recycling rate, which in 2012, stood at 88 percent.

4.3

Municipal Solid Waste (MSW)—more commonly known as trash or garbage—consists of everyday items we use and then throw away, such as product packaging, grass clippings, furniture, clothing, bottles, food scraps, newspapers, appliances, paint, and batteries. This comes from our homes, schools, hospitals, and businesses.

Each year EPA produces a report on MSW generation, recycling, and disposal. In 2010, Americans produced about 250 million tons of MSW, or about 4.3 pounds of waste per person per day.

25,000,000

If every American recycled just one-tenth of their newspapers, we could save about 25 million trees each year.

8%

Only 8% (by weight) of all mobile phones no longer in use in 2009 were collected for recycling.

1100+

1100+ Colleges and Universities which have gone green by choosing ULC



External information gathered from:
<http://www.epa.gov/greenbuilding/pubs/gbstats.pdf>
<http://www.epa.gov/waste/basic-solid.htm>
http://www.kab.org/site/PageServer?pagename=Recycling_Facts_and_Stats
<http://www.salisbury.edu/environment/EnvFF.html>
<http://www.savatree.com/tree-facts.html>
<http://www.steel.org/en/Sustainability/Steel%20Recycling.aspx>

For more information on any of the products shown here, as well as any of our other product lines please contact a sales representative today. Please note - products marked 'In Stock' are available as of this printing. Be sure to check with your sales representative for availability.
2588 Jannetides Blvd., Greenfield, IN 46140
www.uloft.com | 800.423.LOFT (5638)



University Loft Company | MARKETING-704 Product Showcase | 07/2016