



University Loft Company
Upholstery Collection

World HQ

Greenfield, Indiana, USA



University Loft: An American Company Committed to Innovating World Class Furniture!

Welcome, and thank you for checking out our catalog of quality furniture and related products from University Loft Company. At ULC, we've been at the forefront of innovative furniture design and manufacturing for more than a quarter century, serving college and university, government and military,

hospitality, and residential customers. In this catalog you'll find our newest products designed to fit your lifestyle needs today – and designed to last for years to come.

As you flip through these pages, remember that University Loft Company is built on these cornerstones of commitment:

WE'RE COMMITTED TO PRODUCING TOP-QUALITY FURNITURE THAT PROVIDES THE BEST OVERALL VALUE.

By using superior strength materials emphasizing solid wood construction, along with state-of-the-art construction methods, University Loft delivers furniture that stands the test of time.

WE'RE COMMITTED TO MANUFACTURING FURNITURE IN AMERICA

Simply put, we're proud to be an American company manufacturing products in the American heartland. We're also proud to have offices, production facilities and customer markets worldwide where we can expand the reach of American ingenuity, style and quality.

ULC HEADQUARTERS



508,000 SQ/FT Manufacturing Facility & Corporate Headquarters - Greenfield, IN



www.uloft.com

ULC UPHOLSTERY FACTORY



635,000 SQ/FT Upholstery Plant/Distribution Facility -
Morristown, TN

WE'RE COMMITTED TO BE- ING RESPONSIBLE STEWARDS OF OUR ENVIRONMENT

At University Loft Company, we use a hardwood Environmentally Farmed Timber that's stronger than Northern Red Oak! Even better, our EFT hardwood grows faster, yields more and can be used for latex production during its growth cycle.

MOST IMPORTANTLY, WE'RE COMMITTED TO YOU

We're committed to being responsive to your unique

needs, your individual concerns and your furniture-buying challenges. Whether you are a residential consumer choosing a bedroom set for your growing child, a procurer of furniture for military housing, or a college residence life furniture buyer, we're committed to making your furniture buying experience more satisfying.

When all is said and done, we hope you'll recognize that our business isn't really about furniture; it's about the people who entrust University Loft Company to

outfit the personal spaces where they live, work and play. To remain worthy of that trust, we are always learning, always innovating and always improving... our environment, our products and our service. It's what you expect of us and it's what we demand of ourselves.

Thank you for choosing University Loft furniture.



James Jannetides

Founder of University Loft Company

Have questions? Have a special furniture design or manufacturing request? Want to place an order? Contact us today at 800.423.LOFT (5638). We look forward to serving you.



The original Loft built by James Jannetides



Annual Arbor Day Tree Planting
Trees Planted: 800

Employees, local dignitaries, teachers and students gather every year at ULC to celebrate Arbor Day

On the Road to Style

In the classic poem, 'The Road Not Taken', Robert Frost writes:

*Two roads diverged in a wood, and I –
I took the one less traveled by,
And that has made all the difference.*

In life there are, indeed, forks in the road. Since 1994, University Loft Company has chosen the road less traveled – the eco-friendly "green" path – because we believe it makes all the difference to our planet and our customers.

Our Green Initiatives drive us to use Environmentally Farmed Timber – 100% certified hardwood from sustainable and renewable forests, along with bio-based foam cushions and recycled fabrics. Best of all, we do it with that unmistakable University Loft Style!



To learn more about our Green Plan, explore this catalog or visit uloft.com.



www.uloft.com



Let's take a closer look at how our environmental commitment impacts our fabric and soft material choices:

SUSTAINABLE OR ORGANIC? WITH ULC FURNITURE AND FABRICS YOU GET BOTH

At University Loft Company we pay particular attention to the fibers we use and how they are produced and woven into fabric. Typically, the term "sustainable" deals more with the production and manufacturing ends of the supply chain; while "organic" relates to the planting, growing and harvesting of the fibers. We differentiate between the two by carrying the Planet Earth™ brand for all of our sustainable products and the Eco-Luxe™ brand for our organic products.

While natural fibers such as cotton, linen, hemp and bamboo (among others) are biodegradable, they are not considered sustainable if they contain unacceptable levels of harmful chemicals in their current form that could harm the environment in their next stage of life. In other words, to be biodegradable or recycled is not enough because most of the environmental impact comes from the dyeing and finishing of the fabric.

For fiber to be considered "organic", it must be raised and harvested in accordance with the strict standards of one

or more of many certification companies or organizations. These entities maintain standards that ensure there will be little or no impact to the soil in which the plants are grown, the surrounding environment in which they are raised, and to the workers who harvest and bring the fibers to the next level of the supply chain.

There are often guidelines that producers must follow to make certain that certified organic fibers remain separate throughout the production process, from spinning and weaving of yarn, to the dyeing and finishing of the fabric. Just as a product should only be called "organic" if it has been certified, it is also important that the percentage of organic fiber be disclosed. University Loft Company's premium Eco-Luxe™ brand will carry fabrics that contain 100% certified fibers.

GOT STANDARDS? WE DO!

The environmental impact caused by the dyeing and finishing of textiles varies throughout the world. To address this issue, the Global Organic Textile Standard (GOTS) has emerged as the world's leading processing standard for textiles made from organic fibers. GOTS defines high-level environmental criteria along the entire organic textiles supply chain and requires compliance with social criteria as well. Only textile products that contain at least 70% organic fibers can become GOTS certified. Without such a standard, it might be true that a fabric is woven with organic or biodegradable fiber, but its impact on the environment cannot be complete without

evaluating its processing after weaving.

At ULC, all of our natural fiber fabrics are dyed to the GOT Standards. We use non-Chlorine bleach and biodegradable scouring agents to prepare our fabrics for dyeing and finishing. We do not use mercerization or other highly caustic processes during the processing of our fabrics. The dyes we use are all low-impact without heavy metal content. What's more, they are processed with little or no salt and a minimum of auxiliary chemicals that require the lowest possible filtration of the water. And from an energy efficiency standpoint, our dyers utilize on-site heat reclamation and water filtration using modern, efficient equipment.

At University Loft Company, we continually seek innovative eco-friendly technology throughout the supply chain. For example, the Protura™ yarns we feature in certain fabrics allow more dye to permanently penetrate the fiber. Thus, less dye is required and lesser amounts of energy and chemicals are necessary to keep the dye in the fabric and treat the water.

Sustainable furniture production. Organic fabrics. With University Loft Company you get both. And it makes all the difference to our planet.

Planet Earth™ and Eco-Luxe™ are registered trademarks of Treo Textiles International LLC. Protura™ is a registered trademark of Clovertex LLC.



The Jennings Collection

LOFT is dedicated to providing our customers with exactly what they envisioned for their living spaces. If we don't have what you're looking for in our extensive product lines, we can customize a project to suit your specific needs. Since we are a manufacturer of furniture and not just a warehouse, we are able to provide you with furniture that is tailored to meet your needs, even if we don't have it in stock. Contact us today about your vision - we'll work together to make it happen.

Visor-Alderson Construction wanted a brown/black look in their laminate and wood that would provide a very dark and rich appearance. They chose the cafelle color and paired it with a brushed nickel metal to give a good pop of color. They chose the vinyl Jennings sofa and chair combo to match the laminates.



Quality Craftsmanship



Replaceable Velcro™ Coverings

Photographed on location at the Village at
Muller Park Apartments - Bloomington, IN



www.uloft.com

**JENNINGS 660LV**

Apartment living doesn't have to mean dull furnishings. At the Village at Muller Park Apartments in Bloomington, IN, students are treated to high-end style, thanks to Loft's Jennings and Brushed Nickel furnishings. LOFT's photographer was given the opportunity to visit the apartments and see for himself how tenants liked their LOFT furniture. He was graced with many compliments and thanks from students who were impressed with the look and quality of their furniture. Exceeding customer expectations. That's the LOFT way.

The Jennings Collection certainly stands out from the crowd with its modern design, incredible comfort, and durable construction. The chair, sofa, and loveseat all feature detailed top-stitch sewing. The covers are attached using Velcro® Technology making them easy to clean, repair, and replace when needed.

A. 660LV15.XMTG018 CHAIR

Jennings Chair with Mesa Blackberry fabric.
36"W x 37 1/2"D x 36"H

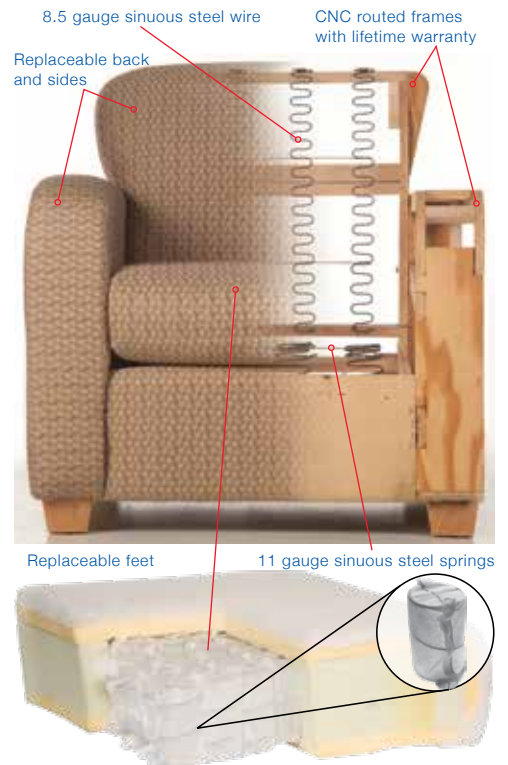
B. 660LV05.XMTG018 SOFA

Jennings Sofa with Mesa Blackberry fabric.
84"W x 37 1/2"D x 36"H

C. 660LV10.XMTG018 LOVESEAT

(not pictured)

Jennings Chair with Mesa Blackberry fabric.
59 1/2"W x 37 1/2"D x 36"H

**FOAM & POCKETED SPRING CUSHIONS**

The seating is a combination of high-density polyurethane foam and pocketed steel coil inner-springs. Each steel coil is encased in its own non-woven fabric pocket, which allows each spring to work independently.

VELCRO® UPHOLSTERY TECHNOLOGY

The Ridgefield Series



Quality Craftsmanship



Replaceable Velcro™ Coverings



www.uloft.com



RIDGEFIELD 496LV

The Ridgefield Series is the newest upholstery collection from University Loft. This stylish addition to our lineup combines years of hand crafted construction methods with a modern look and feel. Contact a representative today to find out more about the Ridgefield Series.

A. 496LV05 SOFA

85"W x 38"D x 37"H

B. 496LV10 LOVESEAT (not pictured)

63"W x 38"D x 37"H

C. 496LV15 CHAIR

39"W x 38"D x 37"H



The Interlude II Sectional



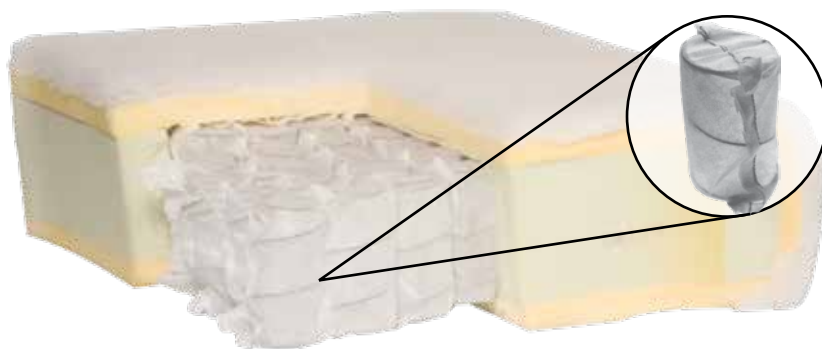
Quality Craftsmanship



Replaceable Velcro™ Coverings



www.uloft.com



FOAM & POCKETED SPRING CUSHIONS

The seating is a combination of high-density polyurethane foam and pocketed steel coil inner-springs. Each steel coil is encased in its own non-woven fabric pocket, which allows each spring to work independently.

851TV INTERLUDE II SECTIONAL

The Interlude Collection is as inviting as it is stylish. With its leather-like vinyl, multi-piece design, and urban style, the Interlude Collection surely makes a statement. These upholstered pieces may be configured to fit any seating need in a common area. From armless and right or left one arm pieces as well as a corner piece - your combinations of pieces allows many arrangements to be set up. The styling is a sure way to improve the look of your common areas. Utilizing Velcro® technology, the covers are easy to clean, repair, or replace.

A. 851TV39 One Arm Chaise

60 1/4"W x 33 1/4"D x 28"H



B. 851TV70 Armless Chair

20 1/2"W x 33 1/4"D x 28"H



C. 851TV75 Armless Corner

33 1/4"W x 33 1/4"D x 28"H



D. 38570-54 END TABLE

End Table with solid wood, square legs high-pressure laminate top. 19 3/4"W x 22"D x 24"H



E. 38580-54 COFFEE TABLE

Coffee Table with high-pressure laminate top and shelf with solid wood square legs. 44"W x 23 3/4"D x 18"H



UNIVERSITY LOFT UPHOLSTERY CRAFTSMANSHIP

- Seats and backs contain solid hardwood spring rails
- All removable pillows are zippered using a hidden pocket for easy adjustment access or replacement
- All Dacron backs are encased and "compartmentalized" in bags to prevent fiber migration and shifting of the padding
- Sides and backs are reinforced and padded to provide a 360° elegant look
- Machine positioned spring clips provide comfort and stability
- Heavy 8.5 gauge steel springs in seat provide strength and flexibility
- 11 gauge steel springs in back ensures lasting comfort
- Fiber-wrapped 2.0" high density CAL117 compliant (fire retardant) cushion foam
- Fiber-blown pillows provide comfort and consistent shape
- Precision tailoring includes more stitches per inch to meet contract standards, lock-stitched seams to prevent raveling, and unique sewing techniques that eliminates the lumps and bumps that result when using staples to tailor furniture.
- Velcro® Technology allows for easy adjustments and affordable fabric replacements

VELCRO® UPHOLSTERY TECHNOLOGY

The Solid Arm RevLoc Series



Quality Craftsmanship



Replaceable Velcro™ Coverings



Locking Cushions Prevent Loss



www.uloft.com



REPLACEABLE CUSHION COVERS

The RevLoc cushions slide into tracks, which are built into the frame and are easily replaceable. Because cushions sometimes "walk away" from lounge areas, these lock into place with a cable (see picture below) and key that the maintenance staff will control. The cushion covers are attached with Velcro® for easy replacement.



VELCRO® UPHOLSTERY TECHNOLOGY

REVLOC SOLID ARM 220LV

The Revloc Solid Arm collection is designed to withstand heavy use. This collection features solid wood arms with an upholstered tight seat cushion. The cushions are easily replaceable due to Velcro® Technology and fasten directly into the frame to prevent slipping.

A. 220LV05 SOFA

75 3/4"W x 33"D x 32"H

B. 220LV10 LOVESEAT (not pictured)

51 1/2"W x 33"D x 32"H

C. 220LV15 CHAIR

27 1/4"W x 33"D x 32"H



WASH OR REPLACE COVERINGS QUICKLY



CABLE KEEPS CUSHIONS LOCKED TOGETHER

The Open Arm RevLoc Series



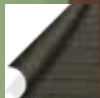
VELCRO® UPHOLSTERY TECHNOLOGY

www.uloft.com





Quality Craftsmanship



Replaceable Velcro™ Coverings



Locking Cushions Prevent Loss

REVLOC OPEN ENDED 240LV

The Revloc Open Arm collection is designed to withstand heavy use. This collection features open wood arms with an upholstered tight seat cushion. The cushions are easily replaceable due to Velcro® Technology and fasten directly into the frame to prevent slipping.

A. 240LV05 SOFA

75 3/4"W x 33"D x 32"H

B. 240LV10 LOVESEAT (not pictured)

51 1/2"W x 33"D x 32"H

C. 240LV15 CHAIR

27 1/4"W x 33"D x 32"H



CUSHIONS LOCK TOGETHER TO PREVENT LOSS OR MISS-USE



REPLACEABLE CUSHION COVERS

The RevLoc cushions slide into tracks, which are built into the frame and are easily replaceable. Because cushions sometimes "walk away" from lounge areas, these lock into place with a cable (see picture above) and key that the maintenance staff will control. The cushion covers are attached with Velcro® for easy replacement.



RIDGEFIELD 496LV

The Ridgefield Series is the newest upholstery collection from University Loft. This stylish addition to our lineup combines years of hand crafted construction methods with a modern look and feel. Contact a representative today to find out more about the Ridgefield Series.

A. 496LV05 SOFA

85"W x 38"D x 37"H

B. 496LV10 LOVESEAT (not pictured)

63"W x 38"D x 37"H

C. 496LV15 CHAIR

39"W x 38"D x 37"H



JENNINGS 660LV

The Jennings Collection certainly stands out from the crowd with its modern design, incredible comfort, and durable construction. The chair, sofa, and loveseat all feature detailed top-stitch sewing. The covers are attached using Velcro® Technology making them easy to clean, repair, and replace when needed.

A. 660LV05 SOFA

Jennings Sofa with Mesa Blackberry fabric.
84"W x 37 1/2"D x 36"H

B. 660LV10 LOVESEAT (not pictured)

Jennings Chair with Mesa Blackberry fabric.
59 1/2"W x 37 1/2"D x 36"H

C. 660LV15 CHAIR

Jennings Chair with Mesa Blackberry fabric.
36"W x 37 1/2"D x 36"H





REVLOC SOLID ARM 220LV

The Revloc Solid Arm collection is designed to withstand heavy use. This collection features solid wood arms with an upholstered tight seat cushion. The cushions are easily replaceable due to Velcro® Technology and fasten directly into the frame to prevent slipping.

A. 220LV05 SOFA

75 3/4"W x 33"D x 32"H

B. 220LV10 LOVESEAT (not pictured)

51 1/2"W x 33"D x 32"H

C. 220LV15 CHAIR

27 1/4"W x 33"D x 32"H



REVLOC OPEN ENDED 240LV

The Revloc Open Arm collection is designed to withstand heavy use. This collection features open wood arms with an upholstered tight seat cushion. The cushions are easily replaceable due to Velcro® Technology and fasten directly into the frame to prevent slipping.

A. 240LV05 SOFA

75 3/4"W x 33"D x 32"H

B. 240LV10 LOVESEAT (not pictured)

51 1/2"W x 33"D x 32"H

C. 240LV15 CHAIR

27 1/4"W x 33"D x 32"H





SUTTON 727

A. 727TV70 ARMLESS CHAIR

24"W x 32"D x 34"H

B. 727TV60 OTTOMAN

20"Diameter 18"H

11 gauge steel springs in back ensures lasting comfort

Precision tailoring includes more stitches per inch to meet contract standards, lock-stitched seams to prevent raveling, and unique sewing techniques that eliminates the lumps and bumps that result when using staples to tailor furniture.



Heavy 8.5 gauge steel springs in seat provide strength and flexibility



Velcro secured fabric

Seats and backs contain solid hardwood spring rails

SUTTON 727

The Sutton features graceful solid wood arms and tailored seat and back. The series can be ordered with or without arms. The perfect look for lounges and lobbies. Choose from hundreds of different patterns in wide array of colors. The covers are easy to clean, repair, or replace due to Velcro® Technology.

A. 727TV14 CHAIR

30"W x 32"D x 34"H

B. 727TV70 ARMLESS CHAIR

24"W x 32"D x 34"H



CARLSON 800LV

The Carlson Collection provides a feeling of stylish comfort. Designed with both style and durability in mind, the Carlson Collection utilizes Velcro® Technology for easy cleaning, replacement, and repair.



A. 800LV05 SOFA

Carlson Sofa with TV Land Slate fabric.
82"W x 35"D x 35 1/2"H

B. 800LV10 LOVESEAT (not pictured)

Carlson Loveseat with TV Land Slate fabric.
60"W x 35"D x 35 1/2"H

C. 800LV15 CHAIR

Carlson Chair with TV Land Slate fabric.
36"W x 35"D x 35 1/2"H



TV LAND SLATE



CONTEMPORARY 140LV

Already seen in universities across the country, the Contemporary Collection is great choice for anyone wanting that time tested classic. The collection features loose cushion back pillows and covers attached using Velcro® Technology. Choose from hundreds of different patterns in wide array of colors.



A. 140LV05 SOFA

76"W x 35"D x 32"H

B. 140LV10 LOVESEAT (not pictured)

54"W x 35"D x 32"H

C. 140LV15 CHAIR

30"W x 35"D x 32"H





APPALACHIAN 861LV

The Appalachian Collection is rich on traditional upholstery details while also utilizing modern Velcro Technology. The elegant welted rolled arms and cushions give the Appalachian Collection a regal look.

A. 861LV05 SOFA

83"W x 34 1/2"D x 36"H

B. 861LV10 LOVESEAT

61"W x 34 1/2"D x 36"H

C. 861LV15 CHAIR

37"W x 34 1/2"D x 36"H



CATAWBA 293LV

The Catawba's straight contemporary lines and comfortable cushions contribute a clean look to any lounge. Uses modern Velcro Technology.

A. 293LV05 SOFA

79"W x 34 1/2"D x 34 1/2"H

B. 293LV10 LOVESEAT (not pictured)

55"W x 34 1/2"D x 34 1/2"H

C. 293LV15 CHAIR

29 1/2"W x 34 1/2"D x 34 1/2"H



STERLING 760LV w/ TABLET ARM

This version of the Sterling is built for comfort and to serve. The swivel tablet tray provides a convenient place for reading materials and more. Tray can be specified in either arm and in your chosen finish.

760LV155 CHAIR

35 1/2"W x 35"D x 32 1/2"H



STERLING 760LV

Like its brethren 750LV series, this Sterling features a tight fitted seat built for comfort, stylish flared arms, and finished pyramid feet but does not offer the wing detail that extends over the arms. Built to last with a slightly different flair.

A. 760LV05 SOFA

81 1/2"W x 35"D x 32 1/2"H

B. 760LV10 LOVESEAT (not pictured)

59 1/2"W x 35"D x 32 1/2"H

C. 760LV15 CHAIR

35 1/2"W x 35"D x 32 1/2"H





STERLING w/ WINGS 750LV

Combining great style and functionality will make this group one that will stand the test of time. Features of the Sterling include a tight fitted seat with generously plump seat cushion, slightly flared arms and natural finished pyramid feet.

A. 750LV05 SOFA

81 1/2"W x 35"D x 32 1/2"H

B. 750LV10 LOVESEAT (not pictured)

59 1/2"W x 35"D x 32 1/2"H

C. 750LV15 CHAIR

35 1/2"W x 35"D x 32 1/2"H



CHELSEA 477

The rich contemporary design of the Chelsea upholstery collection features a stylishly block design with trendy finished chrome legs that create a refreshing look that is sure to enhance any living room decor. With the supportive seating and back cushioning, this furniture collection adds a deep comfort perfect for any lounge environment.

A. 477TV05 SOFA

82"W x 37"D x 29"H

B. 477TV10 LOVESEAT (not pictured)

58"W x 37"D x 29"H

C. 477TV15 CHAIR

36"W x 37"D x 29"H



ASHLEY 311LV

New to our lineup, the Ashley Collection is complimented by finished wood top arm trim and matching pyramid feet. Durable and comfortable, the Ashley Collection is great for the University Environment. The covers can be easily removed for cleaning, repair, or replacement thanks to the use of Velcro Technology.

311LV05 SOFA

79"W x 34 1/2"D x 34 1/2"H



311LV10 LOVESEAT

55"W x 34 1/2"D x 34 1/2"H

311LV15 CHAIR

29 1/2"W x 34 1/2"D x 34 1/2"H

ASHLEY ARMLESS
CHAIR AND
OTTOMAN

SEBRING 770LV w/ TABLET ARM

This chair is the workhorse of the Sebring series featuring not only a tablet arm but also an ottoman and an optional cup holder. The ottoman tucks conveniently under the chair when not in use and the swivel tablet arm provides a convenient surface for books or laptops.

770LV155 CHAIR

34"W x 35"D x 33"H





SEBRING 770LV

One of our most popular styles, the Sebring Collection's sleek lines and subtle sophistication go hand-in-hand with its strength and durability. Choose from hundreds of different patterns in a wide array of colors. The covers are easy to clean, repair, or replace due to Velcro® Technology.

A. 770LV05 SOFA

80"W x 35"D x 33"H

B. 770LV10 LOVESEAT (not pictured)

58"W x 35"D x 33"H

C. 770LV15 CHAIR

34"W x 35"D x 33"H



SEBRING 770LV w/ OTTOMAN

One of our most popular styles, the Sebring Collection's sleek lines and subtle sophistication go hand-in-hand with its strength and durability. Optional Ottomans are available. Choose from hundreds of different patterns in a wide array of colors. The covers are easy to clean, repair, or replace due to Velcro® Technology.

A. 770LV156 CHAIR

34"W x 35"D x 33"H



INGLEWOOD 767TV

The Inglewood's contemporary styling with solid wood arm caps and plush seat cushions is sure to add style and comfort to any environment. The collection features covers attached using Velcro® Technology. Choose from hundreds of different patterns in wide array of colors.



A. 767TV05 SOFA

82"W x 34 1/2"D x 34 1/2"H

B. 767TV10 LOVESEAT (not pictured)

58 1/2"W x 34 1/2"D x 34 1/2"H

C. 767TV15T CHAIR

34"W x 34 1/2"D x 34 1/2"H



INGLEWOOD 767TV w/ TABLET ARM

The Inglewood's contemporary styling with solid wood arm caps and plush seat cushions is sure to add style and comfort to any environment. The collection features covers attached using Velcro® Technology. Choose from hundreds of different patterns in wide array of colors.



767TV159 CHAIR

34"W x 34 1/2"D x 34 1/2"H





KESSLER 740LV

The Kessler Series combines the highest quality materials with tailoring like that of a fine suit. It is available in a wide variety of fabrics and faux leather. Please contact your sales representative today for more information.

A. 740LV05 SOFA

82"W x 35 1/2"D x 34"H

B. 740LV10 LOVESEAT (not pictured)

58 1/2"W x 35 1/2"D x 34"H

C. 740LV15 CHAIR

36"W x 35 1/2"D x 34"H



ROCKINGHAM 520LV

Combining great style and functionality make this group one that will not only last, but look good doing so. Comfortable seat with gently flared arms create a signature piece perfect for any room. Also available in natural wood finish (521LV).

A. 520LV05 SOFA

80"W x 37"D x 35 1/2"H

B. 520LV10 LOVESEAT (not pictured)

58"W x 37"D x 35 1/2"H

C. 520LV15 CHAIR

36"W x 37"D x 35 1/2"H



WESTMORELAND 704TV

The clean contemporary design of the Westmoreland features a rich exotic flair that creates an exciting style sure to enhance any lobby or lounge. Bring your home to life with the style and function of the contemporary Westmoreland.



A. 704TV82 SOFA

78 1/2"W x 37 1/2"D x 37"H

B. 704TV71 LOVESEAT

53 1/2"W x 37 1/2"D x 37"H

C. 704TV70 CHAIR

28 1/2"W x 37 1/2"D x 37"H

D. 704TV75 CORNER CHAIR

37 1/2"W x 37 1/2"D x 37"H

E. 704TV40 CHAISE

28"W x 60"D x 37"H



SUNBERRY 763

The Sunberry collection allows you to create numerous seating variations. Each piece is a separate upholstered piece that can be configured together to create different combinations. Add the corner piece to create a curved, contemporary look in your space.



A. 763TV68 RF CHAIR

30 1/2"W x 34 1/2"D x 31 1/2"H

B. 763TV69 LF CHAIR

30 1/2"W x 34 1/2"D x 31 1/2"H

C. 763TV70 ARMLESS CHAIR

23"W x 34 1/2"D x 31 1/2"H

D. 763TV74 CORNER CHAIR

67"W x 34 1/2"D x 31 1/2"H





SEYMOUR 285LV

The Seymour Collection was created for modern, loft living. The widened, lowered arms of the Seymour Collection definitely provide the foundation for a fresh, contemporary room.

A. 285LV05.MOD1 SOFA

86 1/2"W x 37 1/2"D x 36"H

B. 285LV10.MOD1 LOVESEAT (not pictured)

72 1/2"W x 37 1/2"D x 36"H

C. 285LV15 CHAIR

37"W x 37 1/2"D x 36"H



**ALSO AVAILABLE
WITH WIDER ARMS**



BRENTWOOD 739LV

The Brentwood Collection is as inviting as it is stylish. With its leather-like vinyl, white stitching sewing detail, plush cushions, and urban style, the Brentwood Collection surely makes a statement. Utilizing Velcro® Technology, the covers are easy to clean, repair, or replace.

A. 739LV05 SOFA

84"W x 38"D x 35 1/2"H

B. 739LV10 LOVESEAT

60"W x 38"D x 35 1/2"H

C. 739LV15 CHAIR

36"W x 38"D x 35 1/2"H



ARMSTRONG 464LV

With a unique design and rich contemporary style, the Armstrong is an exceptional accent that enhances the beauty and convenience of any living area. Orders for this chair require a minimum order, please see your sales representative.

A. 464LV305 SOFA

88"W x 38"D x 37"H

B. 464LV115 CHAIR

29 1/2"W x 33 1/2"D x 38 1/2"H

C. 464TV60 OTTOMAN

35"W x 25"D x 20"H

**WORTHINGTON 456LV**

The Worthington chair takes beautifully detailed upholstery and an elegant design to create a traditional style that is sure to enhance any decor. Orders for this chair require a minimum order, please see your sales representative.

456LV15 CHAIR

40"W x 36 1/2"D x 33 1/2"H





ALAMEDO 526LV

Journey back to yesteryear with this traditional living room set. Sofa is a full or queen sized sleeper. The Loveseat is also optionally available as a sleeper. The collection features covers attached using Velcro® Technology. Choose from hundreds of different patterns in wide array of colors. Orders for this chair require a minimum order, please see your sales representative.

A. 526LV05 SOFA
81 1/2"W x 36"D x 35"H

B. 526LV10 LOVESEAT
63"W x 36"D x 35"H

C. 526LV15 CHAIR
36"W x 36"D x 35"H



TOLEDO 785TV

If you're looking for traditional style, look no further than the Toledo series. Loose seat cushions offer ease of cleaning. Tight plush back and rolled arms offer comfort and a great look. Toledo offers hardwood frame and durability to last a lifetime.

A. 785LV05 SOFA
81 1/2"W x 36"D x 35"H

B. 785LV10 LOVESEAT
63"W x 36"D x 35"H

C. 785LV15 CHAIR
36"W x 36"D x 35"H



SELMA 450TV15

The covers can be easily removed for cleaning, repair, or replacement thanks to the use of Velcro Technology. Orders for this chair require a minimum order, please see your sales representative.

450TV15 CHAIR

32"W x 36"D x 35"H



WINSTON II 163TV

Vinyl upholstery in offers the luxurious look and feel of top quality leather with the benefit of protection. This contemporary design features the comfortable feel of plush pillow arms, divided bustle back cushioning perfect for any relaxing living room environment. Orders for this chair require a minimum order, please see your sales representative.

A. 163TV45 CHAIR

35 1/2"W x 36 1/2"D x 40"H



AVAILABLE ON GSA CONTRACT



LITTLETON 443LV

Traditional styling surrounds the Littleton chair and ottoman. With beautifully patterned upholstery and rolled arm design, this collection captures the essence of traditional elegance while holding on to a modern flair. Orders for this chair require a minimum order, please see your sales representative.

A. 443LV15 CHAIR

36"W x 37"D x 35 1/2"H

B. OTTOMAN

23"W x 18"D x 17"H



LAFAYETTE 471TS

With a sweeping contemporary design surrounded by soft comfortable upholstery, the Lafayette upholstered chair creates an exciting style that is sure to awaken any lounge decor. Orders for this chair require a minimum order, please see your sales representative.

471TS15 CHAIR

37"W x 36 1/2"D x 38"H



RICHMOND 674LV

Alive with vibrant color and rich with contemporary style, the Richmond upholstery collection can wake up any living environment with its dynamic beauty. This furniture features a plush pillow back design and stuffed cushions to add a cradling comfort for ultimate relaxation.

A. 674LV05 SOFA

78 1/2"W x 37 1/2"D x 37"H

B. 674LV10 LOVESEAT

53 1/2"W x 37 1/2"D x 37"H

C. 674LV15 CHAIR

28 1/2"W x 37 1/2"D x 37"H

D. 674LV39 CHAISE

28"W x 60"D x 37"H

E. 674LV60 OTTOMAN

30"W x 24"D x 20"H



SCOTTSDALE 404TV14

Designed with a subtle contemporary style and subdued earth tones, The Scottsdale chair creates a warm inviting atmosphere. Orders for this chair require a minimum order, please see your sales representative.

404TV14 CHAIR

38"W x 39"D x 39 1/2"H



Fabrics

CHOOSE ANY OF OUR AVAILABLE FABRICS FOR SOFAS, LOVESEATS AND CHAIRS. CHECK WITH YOUR SALES REPRESENTATIVE FOR FABRIC AVAILABILITY.



TH090 ARCHES
BURGUNDY



TH044 HARMONY
GREY



J132 JEWEL
AUBERGINE



TH011 BONAIRE
BLUE RIDGE



TH008 HARMONY
RED



J241 JEWEL
CORDOVAN



TH108 BONAIRE
CHIANTI



J142 INTERWEAVE
BROWN



J280 JEWEL
EMERALD



J252 CANTERBURY
OLIVE



J22 INTERWEAVE
EMERALD



MTG008 LEXI BLACK



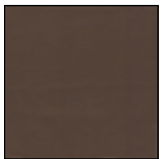
J296 CANTERBURY
PURPLE



J165 INTERWEAVE
FROSTED BLUE



TH030 MAINFRAME
BAY BLUE



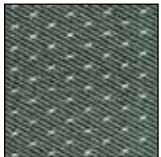
CP131 DILLON JAVA



J225 INTERWEAVE
GOLD DUST



TH004 MAINFRAME
BRUSHED GOLD



A1281 DUET ASH



J60 INTERWEAVE
KHAKI



TH058 MAINFRAME
TRUFFLE



TH118 FIJI PLUM



J16 INTERWEAVE
WALNUT



MTG013 MESA
CHOCOLATE



TH022 FLORA CHILI



J426 JASMINE
CHOCOLATE



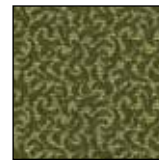
J361 MIRAGE MINT
CIDER



A1169 FOUNDATION
PENDULUM



J412 JASMINE
MOJAVE GOLD



J163 OLD WORLD
CHABLIS



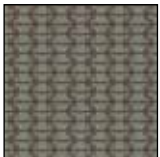
A1139C PARLOUR
JASPER



J72 PHOENIX
SAILOR



A676 SHIRE BLACK
CHERRY



A1082 TRAPEZE
MINT CHOCOLATE



A1087 TV LAND
SLATE



A1088 TV LAND
SURFSIDE



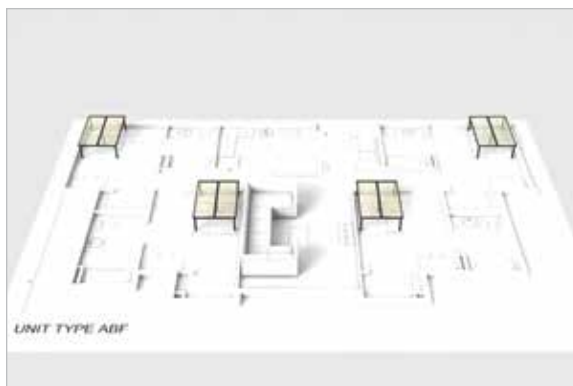
A1316 WHIRLIGIG
TAHOE BLUE

3D Space Planning



VISUALIZE

PLAN



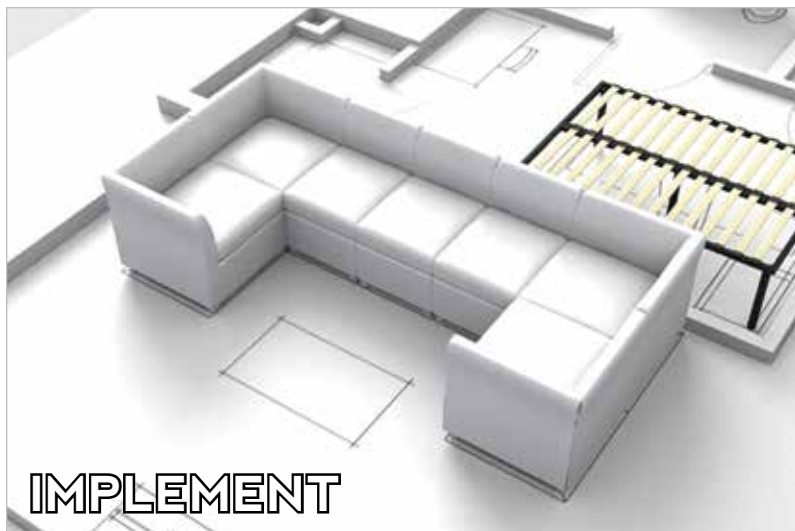
TAKING YOUR VISION TO THE NEXT LEVEL

University Loft Company specializes in using 3D technology to help you plan your next renovation or new construction project.

With this service, you will be able to visualize your space with our furniture before undergoing major construction.

You will work with one of our knowledgeable representatives to determine what furniture will work best for your needs.

Next, we pass your project dimensions and job specifications onto our media department. It's at this point that your blueprints turn into a complete 3D visual that shows you exactly how our product will fit into your space.



IMPLEMENT

Contact your sales representative today to find out more about our 3D Space Planning services.

UPHOLSTERY FABRIC

Once you have chosen the style of your upholstery, the next step is choosing the perfect fabric. University Loft Company has hundreds of contract grade fabrics and vinyls for you to choose from, ensuring that you never have to choose quality over style. A variety of choices are available on our web site at www.uloft.com.

If you have a specific pattern or color scheme in mind, we can arrange for fabric swatches to be sent straight to your site.

FABRIC TERMS:

GRADE: Grade is determined by the quality and cost of the fabric. 'Contract Grade' refers to very durable fabrics suitable for furniture placed in public locations.

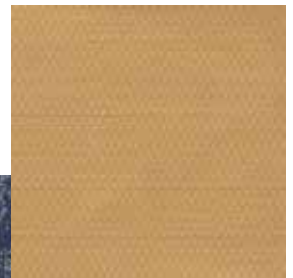
QUALITY: The fabric quality is determined by testing the fabric. The 'double rub' test is performed by a machine simulating the seating motion of normal ware.

SCOTCH GUARD: is used for repelling spills and stains on any fabric surface.

VELCRO® UPHOLSTERY: is a method for attaching fabric coverings to frames without using staples or tacks. Unlike staples or tacks Velcro® attached fabric will not tare at stress points and allows the customer to replace damaged, stained or worn coverings.

PLEASE CONTACT YOUR SALES REPRESENTATIVE OR PROJECT MANAGER FOR FURTHER DETAILS

800-423-LOFT (5638).



QUALITY ASSURANCE FEATURES

MODULAR FRAME CONSTRUCTION

- Arms may be removed for delivery or any necessary adjustment
- Double side rails provide extra strength
- Hardwood spring rails tenon joined at each side and screwed to center support
- CNC machined shaped parts for consistency

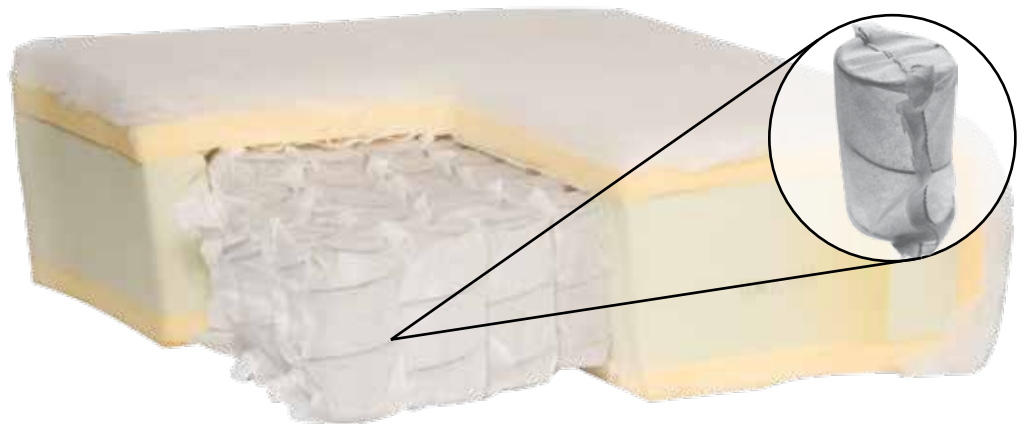


VELCRO® TECHNOLOGY

- All upholstered pieces have separate sewn covers which may be replaced without extensive labor or upholstery costs
- Replaceable sewn cover may be installed by the customer with ease
- Tailoring adjustments and re-upholstery are simplified

CONSISTENT QUALITY

- Tailoring is improved by sewing outside arms to top arms, and outside backs to inside backs eliminating the need for metal tack strips
- Unitized sewing improves the look of arm and back upholstery, as well as skirted styles
- Pre-fabricated foam components for arms and back create smooth, consistent look and feel
- 8.5 gauge springs are used in the seat and 11 gauge springs are used in the back of our upholstered furniture



FOAM & POCKETED SPRING CUSHIONS

The seating is a combination of high-density polyurethane foam and pocketed steel coil inner-springs. Each steel coil is encased in its own non-woven fabric pocket, which allows each spring to work independently.

UNIVERSITY LOFT UPHOLSTERY CRAFTSMANSHIP

- Seats and backs contain solid hardwood spring rails
- All removable pillows are zippered using a hidden pocket for easy adjustment access or replacement
- All Dacron backs are encased and "compartmentalized" in bags to prevent fiber migration and shifting of the padding
- Sides and backs are reinforced and padded to provide a 360° elegant look
- Machine positioned spring clips provide comfort and stability
- Heavy 8.5 gauge steel springs in seat provide strength and flexibility
- 11 gauge steel springs in back ensures lasting comfort
- Fiber-wrapped 2.0" high density CAL117 compliant (fire retardant) cushion foam
- Fiber-blown pillows provide comfort and consistent shape
- Precision tailoring includes more stitches per inch to meet contract standards, lock-stitched seams to prevent raveling, and unique sewing techniques that eliminates the lumps and bumps that result when using staples to tailor furniture.
- Velcro® Technology allows for easy adjustments and affordable fabric replacements



Need to replace fabric? With University Loft's Velcro® appointed coverings, changing upholstery fabric has never been easier.



Step 1

Unscrew feet



Step 2

Remove bolts securing arms



Step 3

Remove arms from chair/sofa body



Step 4

Remove fabric from body of chair/sofa
Replace with new fabric



CHECK OUT OUR VELCRO® UPHOLSTERY VIDEO

<http://youtube.com/watch?v=U19zmc1TFDc>

OUR HARDWOOD IS ECO-FRIENDLY AND STRONGER THAN OAK

ULC REMAINS COMMITTED TO USING SOLID WOOD THAT IS ENVIRONMENTALLY FRIENDLY

At University Loft, we've made a conscious and strategic decision to do what we can to help preserve our environment. We feel certain that if we do not protect the environment, we will have nothing for future generations to inherit. And as a manufacturer, we know that we must guard our natural resources even as we maximize our production capabilities. With this in mind, ULC uses environmentally farmed timbers in our furniture production so we do not contribute to deforestation.

Why is this important? Worldwide, more than 3/4 of the planet's original primary forests have already been destroyed or degraded. Still, irresponsible transnational corporations continue to engage in destructive logging for wood and paper production. The result? Each year tropical rainforests alone are reduced at a rate equivalent to an area the combined size of the Netherlands and Switzerland.

Worldwide, forests are under attack due to harvesting practices widely used by logging industries. Deforestation and the destruction of the environment has become an enormous problem. That's why, in 1998 with Executive Order 13-101, President Clinton mandated that Federal agencies use

any resources available to them to "green" the government. At University Loft Company, we recognize the urgency of this issue and support environmentally responsible efforts at all levels.

THE MANY ADVANTAGES OF UNIVERSITY LOFT'S ENVIRONMENTALLY FARMED TIMBER

At ULC, we know that our customers expect only the best from us. That's why - in support of our environmental commitment - we use Hevea Brasiliensis (HB), an eco-friendly species of tree we refer to as Environmentally Farmed Timber, or EFT. Classified as a hardwood, HB has been proven stronger than Northern Red Oak in independent lab testing.

Another benefit of HB is that when finished, it looks virtually identical to natural oak. With mostly straight grain with few concentric markings, it's an attractive and durable solid wood furniture material.

HB is also the environmentally responsible choice. During its growth cycle, HB produces a natural form of latex that is tapped from its trunk to be used in the production of rubber. Hevea Brasiliensis produces latex for 20 years, after which it is cut down for timber use. Since the late 1800's, HB trees have been farmed, grown for their rubber and then harvested for timber.



HARDWOOD HEVEA BRASILIENSIS PROVEN STRONGER THAN OAK IN LAB TEST

Northern Red Oak is often considered the standard for strength and durability in furniture production. But at University Loft, we've found an alternative that's been proven stronger than oak in indepen-

dent laboratory testing.

In one such test, the "screw pull" test, HB broke at 160 lbs. of pressure while Northern Red Oak snapped under 140 lbs. of pressure. This test and others have shown time and again that HB is a superior material for furniture manufacturing.

BETTER HARDWOOD AND SUPERIOR CONSTRUCTION WIN THE STRENGTH TEST AT FEDERAL TESTING LABORATORIES

At the request of Southern Illinois University to determine the quality of Hevea Brasiliensis, University Loft Company compared a complete range of our case goods against a national competitor during independent testing at Federal Testing Laboratories. In these tests, the products endured repeated cycles of pressure at a certain weight.

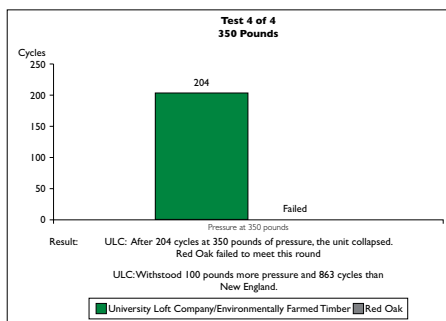
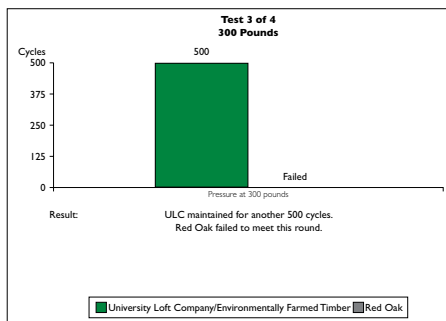
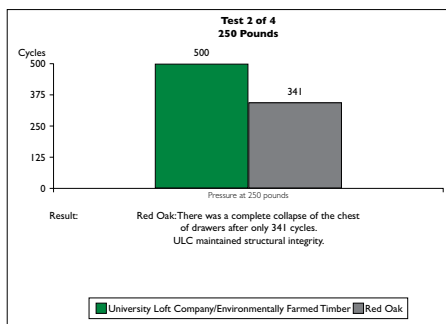
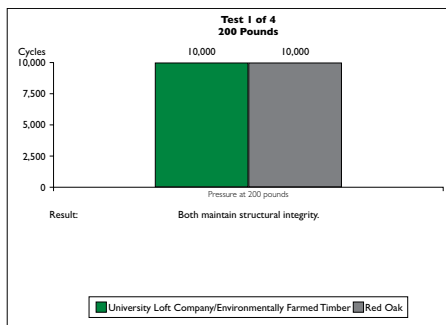
As shown in the test result diagrams in Figure 1, one such test involved ULC's 3-drawer chest, constructed with HB. The ULC chest endured 204 cycles

at 350 lbs. before structural integrity was compromised. Our competitor's product, made from Northern Red Oak, failed after 341 cycles of only 250 lbs. This test, among others, proved that HB is stronger than Northern Red Oak (and ideal for furniture manufacturing), and that ULC uses superior construction methods to complement the native strength of the HB hardwood.

HEVEA BRASILIENSIS IS ENVIRONMENTALLY FARMED TIMBER

University Loft Company purchases our HB from farms certified by The Malaysian Timber Council and from the SCS Forest Management Program endorsed by the Forest Stewardship Council which ensures farm quality, land management, and work practices. Our staff in Malaysia regularly visits these farms and saw mills to guarantee that our strict quality standards continue to be upheld.

Hevea Brasiliensis is a managed crop. It is laid out in sectors and harvested on a 20-year plan. When HB trees are 3 to 4 years old, they are tapped for latex. This latex is used to produce tires, surgical gloves, and other rubber products. In the past, HB trees that had exhausted their latex supply were burned or left to rot. In time, however, it was discovered that HB could be dried to a hardwood suitable for furniture production. With virtually no timber waste after years of productive latex tapping, HB is indeed an eco-friendly Environmentally Farmed Timber.



PLEASE NOTE THAT THE FEDERAL TESTING LABORATORIES CONDUCTED THIS TEST





ULC MAINTAINS WORKFORCE STANDARDS AND BENEFITS AROUND THE GLOBE

At University Loft Company, we import raw material from Malaysia, where, governed by the Malaysian Timber Industry Board, they maintain strict guidelines for safe environmental and labor practices.

Malaysia is an advanced country with a complex economic system. Like the United States, Malaysia has strict labor laws which include a 40-hour work week, an Employee Provident Fund [similar to a 401(K)], and an Insurance Government Fund (similar to Social Security in the U.S.). Malaysian law also regulates the use of child labor similar to U.S. laws.

University Loft Company is committed to its employees and we believe that every employee has rights to fair and ethical treatment. By choosing to position our workforces in places like Malaysia and the United States, we are supporting the world's economy while doing what we can to help the environment.

HB TREES HAVE THE 3-TO-1 ENVIRONMENTAL ADVANTAGE OVER OAK

HB trees take 20 years to grow to harvestable maturity. Oak trees take 60 years. In other words, 3 Hevea Brasiliensis trees can be grown and harvested in the time it take for one oak tree to be ready to be milled. This 3-to-1 HB advan-



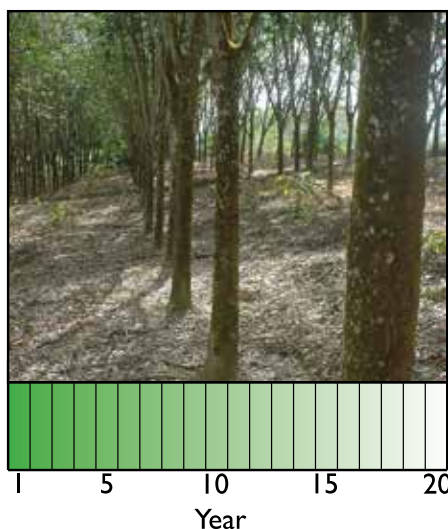
tage demonstrates the sustainability of this natural resource.

Although many logging companies have begun using responsible forestry management practices, this typically only includes planting additional oak seedlings for every full-grown tree cut down. This is a good start as a hedge against deforestation, but it will still take at least 60 years for each of these trees to reach a harvestable diameter. In that same time frame, 3 full-size HB trees can

be harvested for furniture production by University Loft. Because of this, we believe our use of this Environmentally Farmed Timber is the eco-responsible way to supply our furniture production without depleting the world's forests.

HB TREATMENT CLASSIFIED AS SAFE BY THE EPA

Hevea Brasiliensis is kiln dried. This process subjects the wood to temperatures that kill any insect that might be in the wood. That means that a smaller amount of chemical treatment is necessary. While almost all wood must be treated during the drying process, HB is treated with a compound of Boric acid and Borax. This guards against infestation after drying. Because our HB is pressure treated rather than dipped, the process also ensures absorption at the cellular level as opposed to surface-only absorption. Another advantage of



this treatment is that it actually helps make the wood harder, contributing to its greater-than-oak strength.

In addition to being ideal for furniture production, HB has been proven safe by the United States Environmental Protection Agency; and is approved for use in retail as a base material for bowls, tables, spoons, knives and more.

For more information, please visit:
www.epa.gov
www.greenpeace.org

UNIVERSITY LOFT'S GREEN PLAN

To maintain commitment and focus in our environmental initiatives, ULC utilizes a Green Plan. A Green Plan is a resource the Greenpeace organization defines as containing long-term environmental strategies that ensure a high quality of life for present and future generations.

A successful Green Plan considers all aspects of the environment and is developed through consultation with major social sectors. It pulls together a society's intellectual, scientific, and economic resources to implement a responsible, workable plan for environmental prosperity. Green plans can be developed for a country, a state, a region, a city, or – as with University Loft Company – an environmentally-responsible company or organization.

Any good Green Plan must be long-term and comprehensive; and it will clarify environmental goals and translate them into specific actions. Green plans consider not only environmental, but also economic conditions.



Under the direction of ULC's President and CEO James Jannetides, University Loft Company was an early adopter of green initiatives. In January 1999, Jannetides drove the company to become a model for all businesses in caring responsibly for the environment, now and for future generations. The ULC plan, encouraged by the establishment of the Governor's Green Government Council, represented the first step of any furniture manufacturing company toward environmental protection.

The true and continuing effect of this initiative is that it changes how businesses purchase products. Working cooperatively, businesses find new ways of sharing "green" knowledge and best practices while involving an ever-increasing number of employees, suppliers and clients. By purchasing furniture of environmentally sound material produced in a sustainable and eco-friendly manner – from an eco-conscious producer like University Loft Company – customers can help support a healthier global environment.



ULC SALUTES CUSTOMERS WHO HAVE CHOSEN "GREEN" BY USING THE FARMED TIMBER, HEVEA BRASILIENSIS.

Adelphi University
Alabama A & M University
Alabama School of Math & Science
Alderson Broaddus College
Alverno College
Ancilla College
Anderson University
Appalachian State University
Arizona Christian College
Arizona State University
Arizona Western College
Arkansas School for Mathematics & Science
Arkansas State University
Arkansas Tech University
Asbury University
Ashland University
Ashford University
Assumption College
Atlanta Christian College
Augsburg College
Augustana College
Aurora University
Baker College of Flint
Baker College of Owosso
Baldwin Wallace University
Baptist College of Florida
Baptist Rehabilitation Institute
Barnard College
Barry University
Baylor School
Bedford School
Belmont Abbey College
Benedict College
Benedictine College
Benedictine University
Bentley College
Bethel Bible Village
Bethune Cookman University
Black Hills State University
Bloomsburg University
Bluefield College
Boise State University
Bradley University
Brandeis University
Brevard College
Brewton-Parker College
Briar Cliff College
Bridgewater College in Virginia
Bryant University
Buena Vista University
Cal State Sacramento
California Baptist University
California College of Arts & Crafts
California Institute of Technology
California Polytechnic - San Luis Obispo
California State University - Chico
California State University - Monterey Bay
California State University - Dominguez Hills
California State University - Fresno
California State University - San Bernardino
California State University - San Francisco
California State University - Stanislaus
California University of Pennsylvania
Campbell University
Carleton College
Carnegie Mellon University
Carroll College
Carthage College
Catawba College
Cate School
Centenary College
Central Iowa Community College
Central Methodist College
Central Michigan University
Chowan University
Christ for the Nations College
Christian Brothers University
Clarion University of Pennsylvania

Clark Atlanta University
Clark University
Clarkson University
Clearwater Christian College
Clemson University
Coastal Carolina University
Coffeyville Community College
Colgate University
College of Mount Saint Vincent
College of Saint Francis
College of Saint Scholastica
College of Saint Elizabeth
Colorado Christian University
Colorado College
Colorado Mountain College
Colorado State University
Columbia College
Concord College
Concordia University
Concordia University - Saint Paul
Converse College
Core Concepts of Florida
Corinthian Colleges
Cornell College
Cornell University
Creighton University
Crossroads Bible College of Indianapolis
Crown College
Crown Point Institute of Technology
Cumberland University
Curry College
Dallas Christian College
Dakota State University
Davis College
Delaware State University
Dodge City Community College
Drexel University
Duquesne University
Earlham College
East Coast Bible College
East Texas Baptist University
Eastern Michigan University
Edinboro University
Edward Waters College
Elizabeth City State University
Elizabethtown College
Ellsworth Community College
Emmanuel College
Emmaus Bible College
Emory & Henry College
Eureka College
Fairfield University
Fairleigh Dickinson University
Faulkner University
Fisk University
Florida Atlantic University
Fort Scott Community College
Franklin & Marshall College
Fresno Pacific University
Furman University
Gallaudet University
George Mason University
Georgetown College
Georgetown University
Georgia Southwestern State University
Gordon College
Grace College
Grambling State University
Grand View University
Green Acre Bahai School
Greensboro College
Greenville College
Harding University
Hanover College
Hardin - Simmons University
Haskell Indian Nations University
Hastings College
Heidelberg University

Henderson State University
Hendrix College
Hesser College
High Point University
Highland Community College
Hocking College
Hofstra University
Hollins University
Holmes Community College
Homes Bible School
Houston Baptist University
Howard University
Huntington College
Hyles - Anderson College
Illinois Central College
Illinois College
Indiana Diving Academy
Indiana School for the Blind & Deaf
Indiana State University
Indiana University Purdue University - Fort Wayne
Indiana University Purdue University - Indpls
Indiana Wesleyan University
International Business College
International College of Hospitality Mgmt
Iowa Central Community College
Iowa Lakes Community College
Jackson College
James Madison University
Jarvis Christian College
Jefferson College
John Brown University
John Carroll University
Johns Hopkins University
Johnson & Wales University
Johnson Bible College
Johnson C. Smith University
Johnson University
Judson University
Kansas City Art Institute
Kansas State University
Keene State College
Kent School
Kent State University
Keystone Junior College
King College
Lamar University
Lane College
La Roche College
La Sierra University
Lake Forest College
Lake Superior State University
Lambuth University
Lawrence University
Limestone College
Lee University
Lenoir-Rhyne University
LeTourneau University
Limestone College
Lincoln Christian University
Lindenwood University
Lock Haven University
Louisiana State University
Louisville Collegiate School
Loyola University - New Orleans
Lubbock Christian University
Luther College
MacMurray College
Maine School of Science & Mathematics
Marantha Baptist Bible College
Marian University
Mars Hill University
Marygrove College
Massanutten Military Academy
McKendree College
McMurry University
Medaille College
Memphis College of Art



Mercer University
 Mercyhurst College
 Messiah College
 Michigan Technological University
 Molloy College
 Montana State University - Bozeman
 Montana Tech
 Moody Bible Institute
 Mooseheart Child City & School
 Mount Ida College
 Mount Mercy College
 Mount Olive College
 Mount Saint Mary's College
 Mount Saint Clare College
 Multnomah Bible College
 Murray State College
 NW Christian College
 Nashville Auto Diesel College
 Nebraska Christian College
 Newberry College
 Nichols College
 Nicholls State University
 Norfolk State University
 North Carolina A & T State University
 North Central College
 North Georgia College
 Northeast Community College
 Northeast Oklahoma A&M University
 Northeastern University
 Northern Michigan University
 Northern State University
 Northwest Christian University
 Northwest Iowa Community College
 Northwest Nazarene University
 Northwestern Oklahoma State University
 Northwestern University
 Northwood University
 Oakdale Christian Academy
 Oakwood University
 Ohio University
 Ohio Wesleyan University
 Oklahoma City University
 Old Dominion University
 Otero Junior College
 Ouachita Baptist University
 Our Lady of the Lake University
 Oxford College of Emory University
 Pacific Union College
 Park University
 Philander Smith College
 Philadelphia University
 Piedmont College
 Pine Manor College
 Pittsburgh Technical Institute
 Point Park College
 Portland State University
 Post University
 Potomac State College
 Pratt Community College
 Presentation College
 Queens University of Charlotte
 Quincy University
 Reinhardt University
 Rhode Island School of Design
 Richard Stockton College of New Jersey
 Robert Morris College
 Rochester College
 Rochester Institute of Technology
 Rocky Mountain College
 Roger Williams University
 Rogers State University
 Rollins College
 Rose Hulman Institute of Technology
 Rutgers University - Camden
 Saint Anselm College
 Saint Augustine College
 Saint Joseph's College
 Saint Louis Priory School

Saint Louis University
 Saint Xavier University
 Salem Academy & College
 Salisbury University
 Sam Houston State University
 San Diego State University
 San Francisco Ballet
 Shenandoah University
 Shippensburg University
 Simpson College
 Snead State Community College
 South Dakota State University
 South Georgia Technical College
 Southeastern Oklahoma State University
 Southern Adventist University
 Southern Baptist Theological Seminary
 Southern Illinois University - Carbondale
 Southern Illinois University - Edwardsville
 Southern New Hampshire University
 Southern University
 Southwestern Baptist Theological Seminary
 Southwestern Oregon Community College
 Spring Hill College
 St. John's University
 State University of New York - Albany
 State University of New York - Alfred
 State University of New York - Binghamton
 State University of New York - Buffalo
 State University of New York - Cortland
 State University of New York - Delhi
 State University of New York - Morrisville
 State University of New York - New Paltz
 Stevens Institute of Technology
 Stillman College
 Stuart Hall School
 Sul Ross State University
 Teachers College
 Temple University
 Tennessee State University
 Texas Southern University
 Texas Tech University
 The Art Institute of Pittsburgh
 The Cleveland Institute of Art
 The Hill School
 The Seed School
 Thiel College
 Tiffin University
 Towson State University
 Treasure Valley Community College
 Trine University
 Trinity International University
 Trinity Lutheran Seminary
 Tri-State University
 Tulane University
 Tuskegee University
 Union College
 Union University
 University Maryland Baltimore County
 University of Akron
 University of Alabama - Huntsville
 University of Arkansas
 University of Arkansas - Pine Bluff
 University of California - Irvine
 University of California - Los Angeles
 University of Colorado - Boulder
 University of Connecticut
 University of Dallas
 University of Delaware
 University of Denver
 University of Evansville
 University of Houston
 University of Incarnate Word
 University of Indianapolis
 University of Iowa
 University of Louisville
 University of Maine
 University of Maryland - Eastern Shores
 University of Miami

University of Missouri - Kansas City
 University of Mount Olive
 University of Nebraska
 University of Nevada - Las Vegas
 University of New England
 University of New Hampshire
 University of New Mexico - Albuquerque
 University of North Carolina - Asheville
 University of North Carolina - Chapel Hill
 University of North Carolina - Greensboro
 University of Notre Dame
 University of Oklahoma
 University of Oregon
 University of Pittsburgh
 University of Portland
 University of Rio Grande
 University of Saint Francis
 University of San Francisco
 University of Science & Arts
 University of South Dakota
 University of Southern Indiana
 University of Southern Mississippi
 University of Tampa
 University of Tennessee - Chattanooga
 University of Tennessee - Knoxville
 University of Texas - Austin
 University of the Ozarks
 University of the Pacific
 University of the Sciences in Philadelphia
 University of Virginia College
 University of West Florida
 University of West Indies - Mona
 University of Western Ontario
 University of Wisconsin - Madison
 University of Wisconsin - Marathon County
 University of Wisconsin - Oshkosh
 University of Wyoming
 Urbana College
 Utah State University
 Utica College
 Valdosta State University
 Valley City State University
 Valparaiso University
 Villanova University
 Vincennes University
 Voorhees College
 Wabash College
 Warner University
 Warren Wilson College
 Washington Adventist University
 Washington University of St. Louis
 Wayland Baptist University
 Weatherford College
 West Chester University
 Western Iowa Tech Community College
 Western Michigan University
 Westminster College
 Westmont College
 Wheeling Jesuit University
 Wheelock College
 Wilfrid Laurier University
 William Carey College
 William Penn University
 Wingate University
 Wisconsin Lutheran College
 Wofford College
 Yale University
 Youngstown State University



Hand-crafted upholstery from Morristown, TN



Seating Styles For Any Use



Multi-Room Apartment Layout



The new Ridgefield Upholstery group



WHY?

VISIT UNIVERSITY LOFT COMPANY TO SEE WHAT'S NEW FOR 2017, AND LEARN WHY WE'VE BEEN THE BEST FOR OVER 31 YEARS

VISIT OUR HEADQUARTERS IN THE HEARTLAND

No matter where you call home, you can always come "back home again in Indiana." That's where you'll find the University Loft Company headquarters and primary production facility – squarely in the American heartland, in Greenfield, Indiana.

Our Greenfield facility boasts more than 500,000 square feet of manufacturing and warehousing space; and our corporate offices and product showroom are right there under the same roof. Of particular interest to visitors is our 58,000 square foot showroom. It's the perfect place to view ULC's modular student furniture product lines all in one place. With more than 30 student room mock-ups (plus a student apartment setup), we make it easy for you to envision how University Loft furniture will enhance student living on or off-campus at your college or university.

Plan your visit to University Loft's headquarters in the heartland, or arrange to have our Mobile Showroom at your next campus event. Contact a representative today at 800.423.LOFT (5638).



www.uloft.com



Let our Mobile Showroom Come to You!

Can't quite get that trip to Greenfield, Indiana worked into your busy schedule? No worries. Chances are that we can bring some surprising student furniture samples to you via the University Loft mobile showroom!

While our traveling furniture showcase can't bring you all the product line samples we showcase in our Greenfield showroom, we have equipped our mobile coach with some of our most popular and requested student furnishings.

Inside the coach, you'll find dorm room and student lounge vignettes featuring Uloft's mod-

ular, solid-wood student furniture. And to get feedback from students as well as residence life furniture buyers, we can often bring the mobile showroom to campus events like homecomings, student celebrations and ribbon-cutting ceremonies. We'll even bring the grill so students can fill their bellies while getting better acquainted with the many great products from the makers of cool furniture - University Loft Company!

So contact your University Loft student furniture representative to arrange to have our Mobile Showroom at your next campus event. Call us today to learn more at 800.423.LOFT (5638)!

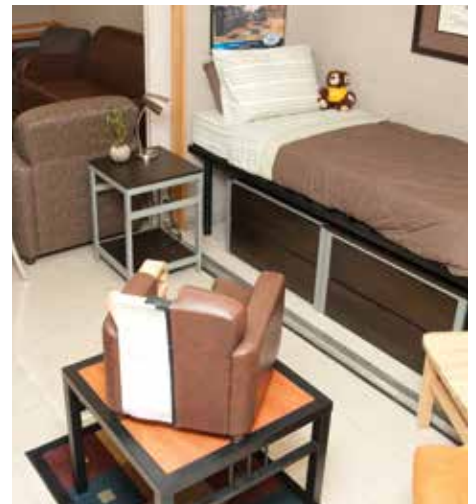


MOBILE SHOWROOM SPECS

- Height: 13' 6"
- Length: 50' 6"
- Width: 10' closed
13' 6" open

FEATURES

- Gas Grill
- Microwave
- Range
- Refrigerator/Freezer
- Awnings for rain/sun cover
- Bathroom/Shower
- TV/DVD





At LOFT we are always striving to find new ways to be 'Green'. For years we've made a conscious effort to be green by using environmentally farmed timber in our manufacturing practices.

We print using paper certified by the Forest Stewardship Council (FSC), which is 15% recycled and Green Seal certified.



For more information on any of the products shown here, as well as any of our other product lines please contact a sales representative today. Please note - products marked 'In Stock' are available as of this printing. Be sure to check with your sales representative for availability.

2588 Jannetides Blvd., Greenfield, IN 46140 | www.uloft.com | 800.423.LOFT (5638)



University Loft Company | MARKETING-711 Upholstery Collection | 07-2018